



# CONNECTIVITY GUIDE

## HKEX Orion Market Data Platform Securities Market & Index Datafeed Products (OMD-C)

Version:  
1.10  
30 Jun 2017

© Copyright 2017 HKEX

All Rights Reserved

## DOCUMENT HISTORY

Document Version	Date	Change Description				
1.0	30 Jul 2012	First issue				
1.1	31 Oct 2012	<p>Section 2.1.1, 2.2.1 – include Broker Queue (54) message in Securities Level 2 Conflated Channels</p> <p>Section 2.1.2, 2.2.2 – remove News (22) from Securities Status Channel</p> <p>Section 2.2.1 – update the correct Line A multicast IP address for Securities Status Channel</p> <p>Section 2 – add some descriptive reference on network connection to OMD</p> <p>Section 3 &amp; 4 – add some guidelines on SDNet lines or HSN connection, e.g. estimated bandwidth requirements, sharing of SDNet/2 or HSN, additional RTS login ID/IP address for Retransmission etc</p>				
1.2	7 Mar 2013	<p>Section 2 – (i) add description on the requirement of the interface of the LAN switch to set speed as “auto-sense” and duplex mode as “auto-sense” and “auto-negotiation”; (ii) update the sample connection diagram for the LAN switch and the link between routers A &amp; B; (iii) add note not to subscribe to multicast addresses &amp; port IDs not specified in the Connectivity Guide.</p> <p>Section 2.1.7 – update the production IP Unicast Address in the table</p> <p>Section 2.2 – update the section heading</p> <p>Appendix B – update the Client Sample Configuration Sheet to include the sample connection diagram &amp; clarify on the setup</p>				
1.3	24 May 2013	<p>Section 1 – added overview for OCG End-to-End Test Environment</p> <p>Section 2.3 – newly added for OCG End-to-End Test Environment Connectivity Details</p> <p>Section 2.4 (previously 2.3) and Section 3.2 – amended for above</p> <p>Section 4.1 - clarify the policy on usage of login ID for retransmission service</p>				
1.4	5 Aug 2015	<table border="1"> <thead> <tr> <th>Effective Date</th> <th>Changes</th> </tr> </thead> <tbody> <tr> <td>Q3 2016</td> <td> <p><b>Introduction of Closing Auction Session (CAS) &amp; Volatility Control Mechanism (VCM)</b></p> <p>Section 2.1, 2.2, 2.3 – added new messages VCM Trigger (23), Reference Price (43) and Order Imbalance (56) for SS, SP &amp; SF</p> </td> </tr> </tbody> </table>	Effective Date	Changes	Q3 2016	<p><b>Introduction of Closing Auction Session (CAS) &amp; Volatility Control Mechanism (VCM)</b></p> <p>Section 2.1, 2.2, 2.3 – added new messages VCM Trigger (23), Reference Price (43) and Order Imbalance (56) for SS, SP &amp; SF</p>
Effective Date	Changes					
Q3 2016	<p><b>Introduction of Closing Auction Session (CAS) &amp; Volatility Control Mechanism (VCM)</b></p> <p>Section 2.1, 2.2, 2.3 – added new messages VCM Trigger (23), Reference Price (43) and Order Imbalance (56) for SS, SP &amp; SF</p>					
1.5	15 Dec 2015	<table border="1"> <thead> <tr> <th>Effective Date</th> <th>Changes</th> </tr> </thead> <tbody> <tr> <td>Now</td> <td> <p><b>Update of Information</b></p> <ul style="list-style-type: none"> <li>Appendix A – SDNet/2 Accredited Vendors Information</li> </ul> </td> </tr> </tbody> </table>	Effective Date	Changes	Now	<p><b>Update of Information</b></p> <ul style="list-style-type: none"> <li>Appendix A – SDNet/2 Accredited Vendors Information</li> </ul>
Effective Date	Changes					
Now	<p><b>Update of Information</b></p> <ul style="list-style-type: none"> <li>Appendix A – SDNet/2 Accredited Vendors Information</li> </ul>					

1.6	19 Feb 2016	<b>Effective Date</b>	<b>Changes</b>
		Q2 2016	<b>Introduction of a new Disaster Recovery (DR) mechanism</b> <ul style="list-style-type: none"> <li>Section 2 (across sub-sections) – Add information on the new dedicated channel for the new Disaster Recovery Signal (105) message</li> </ul>
		Now	<b>Update of Information</b> <ul style="list-style-type: none"> <li>Section 3.3 and Section 3.4 – Remove MDF3.8 related information</li> </ul>
1.7	4 Aug 2016	<b>Effective Date</b>	<b>Changes</b>
		29 Aug 2016	<b>Launch of new Indices</b> <ul style="list-style-type: none"> <li>Section 2.1.4, 2.2.4 and 2.3.4 – Add TR Index Channel</li> </ul>
1.8	03 Feb 2017	<b>Effective Date</b>	<b>Changes</b>
		Q2 2017	<b>Launch of Stock Connect Market Feed</b> <ul style="list-style-type: none"> <li>Section 2.1.7, 2.2.7 and 2.3.7 – Add Stock Connect Daily Quota Balance and Stock Connect Market Turnover Channels</li> <li>Section 3.2 – Add bandwidth requirement for Datafeed with Stock Connect Market Feed (SCM)</li> </ul>
1.9	25 Apr 2017	<b>Effective Date</b>	<b>Changes</b>
		Q2 2017	<b>Launch of Stock Connect Market Feed</b> <ul style="list-style-type: none"> <li>Section 2.1.7 and 2.2.7 – Update Stock Connect Daily Quota Balance and Stock Connect Market Turnover multicast IP address.</li> </ul>
1.10	30 Jun 2017	<b>Effective Date</b>	<b>Changes</b>
		24 July 2017	<b>Launch of Orion Trading Platform – Securities Market (OTP-C)</b> <ul style="list-style-type: none"> <li>Section 2.1.2 and 2.1.3 – Add clarification notes on distribution of order and trade information among multiple channels</li> <li>Section 2.3 – Heading amended to specify it is for the AMS/3 OCG E2E environment</li> <li>Section 2.4 – Added for connectivity details of OMD-C in the OTP-C OCG E2E environment</li> </ul>

## Contents

<b>1.</b>	<b>Overview</b>	<b>3</b>
<b>2.</b>	<b>Configuration Information</b>	<b>4</b>
2.1	Production Environment Connectivity Details	6
2.1.1	OMD Securities Standard (conflated)	6
2.1.2	OMD Securities Premium (streaming)	7
2.1.3	OMD Securities FullTick (streaming)	8
2.1.4	OMD Index (Streaming)	9
2.1.5	Conflated Broker Queue	9
2.1.6	Odd Lot Order (Streaming)	9
2.1.7	Stock Connect Data (Streaming)	10
2.1.8	HKEX OMD Retransmission Unicast Connectivity	10
2.2	Readiness Test Environment Connectivity Details	11
2.2.1	OMD Securities Standard (conflated)	11
2.2.2	OMD Securities Premium (streaming)	12
2.2.3	OMD Securities FullTick (streaming)	13
2.2.4	OMD Index (Streaming)	14
2.2.5	Conflated Broker Queue	14
2.2.6	Odd Lot Order (Streaming)	14
2.2.7	Stock Connect Data (Streaming)	15
2.2.8	HKEX OMD Retransmission Unicast Connectivity	15
2.3	AMS/3 OCG End-to-End Test Environment Connectivity Details	16
2.3.1	OMD Securities Standard (conflated)	16
2.3.2	OMD Securities Premium (streaming)	17
2.3.3	OMD Securities FullTick (streaming)	18
2.3.4	OMD Index (Streaming)	19
2.3.5	Conflated Broker Queue	19
2.3.6	Odd Lot Order (Streaming)	19
2.3.7	Stock Connect Data (Streaming)	20
2.3.8	HKEX OMD Retransmission Unicast Connectivity	20
2.4	OTP-C OCG End-to-End Test Environment Connectivity Details	21
2.4.1	OMD Securities Standard (conflated)	21
2.4.2	OMD Securities Premium (streaming)	22
2.4.3	OMD Securities FullTick (streaming)	23
2.4.4	OMD Index (Streaming)	24
2.4.5	Conflated Broker Queue	24
2.4.6	Odd Lot Order (Streaming)	24
2.4.7	Stock Connect Data (Streaming)	25
2.4.8	HKEX OMD Retransmission Unicast Connectivity	25
2.5	Individual Client Configuration Details	26
<b>3.</b>	<b>Guidelines on SDNet/2 lines / HSN connection</b>	<b>27</b>
3.1	Mode of OMD connection	27
3.2	Bandwidth Requirement	27
3.2.1	Production SDNet/2 / HSN and Testing SDNet/2 / HSN for Readiness Test	27
3.2.2	Testing SDNet/2 / HSN for OCG End-to-End Test	27
3.3	Sharing of SDNet/2 lines or HSN port set	28
3.4	Bandwidth for shared SDNet/2 lines or HSN port set	28
3.5	SDNet/2 High Performance Option	29
<b>4.</b>	<b>Other Guidelines on OMD Connections</b>	<b>30</b>
4.1	Additional Login IDs/Client IP addresses for Unicast Retransmission Service	30
4.2	Installation of SDNet/2 and HSN lines	30

4.2.1	SDNet/2 lines.....	30
4.2.2	HSN lines.....	30
<b>Appendix A – SDNet/2 Accredited Vendors Information.....</b>		<b>31</b>
<b>Appendix B – Sample Client Configuration Information .....</b>		<b>32</b>

### 1. Overview

This document aims to provide network configuration information and guidance to assist information vendors and end-users (“clients”) in setting up their networks for making connection to testing and production environments for OMD Securities Market and Index Datafeed Products (OMD-C).

OMD-C is available in two testing environments to serve different purposes:

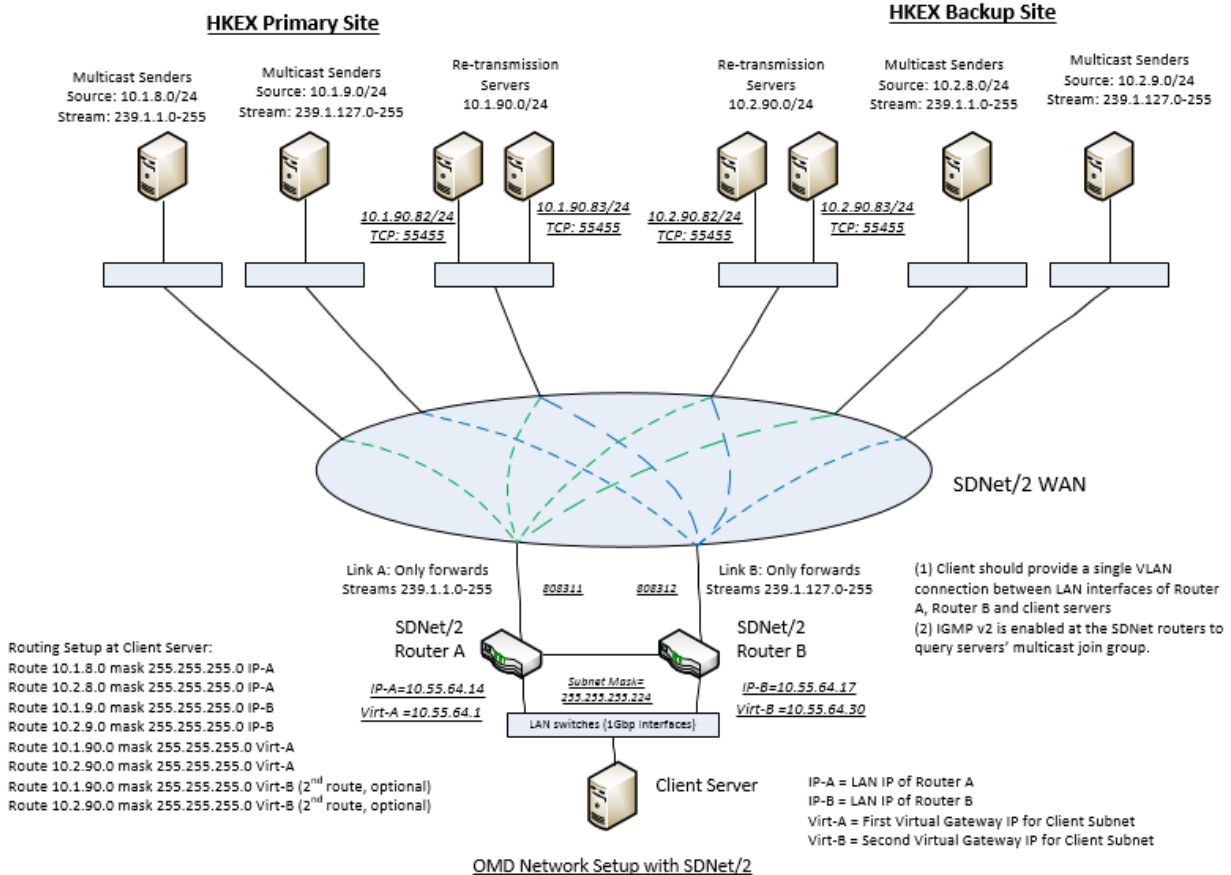
- i. Readiness Test Environment is provided for clients to perform Readiness Test on OMD-C so as to enable them to fully test the functional and technical capability of their OMD-C feed handler.
- ii. OCG End-to-End Test Environment is provided for Exchange Participants (EPs) to perform the End-to-End Test on the HKEX Orion Central Gateway (OCG). OMD-C is available in this testing environment to facilitate loop test (input order and receive market data) by OCG EPs who plan to receive market data via direct connection to OMD-C.

This document contains:

- Configuration information, i.e. IP addresses of the channels assigned for each of the OMD-C datafeed products in OMD-C Production environment and Readiness Test environment as well as the OCG End-to-End Test Environment
- Guidelines / policies for SDNet/2 and HSN connection

## 2. Configuration Information

OMD adopts multicast transmission protocol for real-time data transmission with retransmission recovery service running on Unicast. Clients are required to set correct network configurations in order to establish proper connection to the corresponding OMD multicast server and retransmission server. Below is a sample connection diagram which provides an overview of SDNet/2 network connection to OMD for reference.



For OMD connection via SDNet/2, a client system has to set up routing to the HKEX host subnets as the diagram depicted. To receive multicast stream, IGMP version 2 is employed at the SDNet/2 routers to query the multicast groups which the client system subscribes. The client system should enable the IGMP function and issue join messages to the SDNet/2 routers for the entitled multicast groups.

For OMD connection by co-location at HKEX Host Data Centre (HDC), clients are required to provide their own routers to connect to the HKEX network. The protocols used in HDC network are BGP4 and Multicast PIM sparse mode. For details, please refer to the Interface Specification on Connectivity Services and Timing Service of HKEX Hosting or contact HKEX Hosting Services team via email [hostingservices@hkex.com.hk](mailto:hostingservices@hkex.com.hk).

Since the physical speed of an SDNet/2 circuit is 1Gbps, therefore, the interface of a client end LAN switch and client end servers have to be 1Gbps in order to prevent packet drops of multicast packet burst. To connect with SDNet/2 routers, interface of the LAN switch should be configured with speed as "auto-sense" and duplex mode as "auto-sense" and "auto-negotiation". Then, when the link comes up, the corresponding interface of the LAN switch should learn 1Gbps and full duplex.

## Securities Market & Index Datafeed Products (OMD-C)

---

The client systems are required to subscribe to the multicast addresses and port IDs for the subscribed OMD products according to multicast channel subscriptions as listed in Section 2.1 for production environment or as listed in Section 2.2 for Readiness Test environment or as listed in Section 2.3 and Section 2.4 for OCG End-to-End Test environment for AMS/3 and OTP-C. Clients should not subscribe to other multicast addresses and port IDs not specified in this Connectivity Guide or else it could result in receiving non-OMD packets. Clients should ignore any multicast packets outside the channels subscribed to.

The following 4 subsections 2.1, 2.2, 2.3 and 2.4 provide connection details of the OMD-C Production Environment, OMD-C Readiness Test environment, AMS/3 OCG End-to-End Test Environment and OTP-C OCG End-to-End Test Environment respectively.



## Securities Market & Index Datafeed Products (OMD-C)

### 2.1 Production Environment Connectivity Details

#### 2.1.1 OMD Securities Standard (conflated)

Multicast Service	Contents	Real-time Market Data Services		Refresh Snapshot Data Services	
		Channel ID	Multicast Channel Subscriptions	Channel ID	Multicast Channel Subscriptions
<b>Securities Reference Data Channel</b>	Market Definition (10) Security Definition (11) Liquidity Provider (13) Currency Rate (14)	1	A: 239.1.1.1:51000 B: 239.1.127.1:51000	501	A: 239.1.1.11:51000 B: 239.1.127.11:51000
<b>Securities Status Channel</b>	Trading Session Status (20) Security Status (21)	2	A: 239.1.1.1:51001 B: 239.1.127.1:51001	502	A: 239.1.1.11:51001 B: 239.1.127.11:51001
<b>Securities Value Add Data Channel</b>	Market Turnover (61)	3	A: 239.1.1.1:51002 B: 239.1.127.1:51002	503	A: 239.1.1.11:51002 B: 239.1.127.11:51002
<b>Securities News Channel</b>	News (22)	4	A: 239.1.1.1:51003 B: 239.1.127.1:51003	504	A: 239.1.1.11:51003 B: 239.1.127.11:51003
<b>Securities Level 2 Conflated Channels</b>	Trade Ticker (52) Nominal Price (40) Indicative Equilibrium Price (41) Closing Price (62) Aggregate Order Book Update (53) Statistics (60) Yield (44) Broker Queue (54) VCM Trigger (23) Reference Price (43) Order Imbalance (56)	10	A: 239.1.1.2:51000 B: 239.1.127.2:51000	510	A: 239.1.1.12:51000 B: 239.1.127.12:51000
<b>Securities DR Signal Channel</b>	Disaster Recovery Signal (105)	9	A: 239.1.1.1:51008 B: 239.1.127.1:51008		

## Securities Market & Index Datafeed Products (OMD-C)

### 2.1.2 OMD Securities Premium (streaming)

Multicast Service	Contents	Real-time Market Data Services		Refresh Snapshot Data Services	
		Channel ID	Multicast Channel Subscriptions	Channel ID	Multicast Channel Subscriptions
<b>Securities Reference Data Channel</b>	Market Definition (10) Security Definition (11) Liquidity Provider (13) Currency Rate (14)	1	A: 239.1.1.1:51000 B: 239.1.127.1:51000	501	A: 239.1.1.11:51000 B: 239.1.127.11:51000
<b>Securities Status Channel</b>	Trading Session Status (20) Security Status (21)	2	A: 239.1.1.1: 51001 B: 239.1.127.1:51001	502	A: 239.1.1.11:51001 B: 239.1.127.11:51001
<b>Securities Value Add Data Channel</b>	Market Turnover (61)	3	A: 239.1.1.1:51002 B: 239.1.127.1:51002	503	A: 239.1.1.11:51002 B: 239.1.127.11:51002
<b>Securities News Channel</b>	News (22)	4	A: 239.1.1.1:51003 B: 239.1.127.1:51003	504	A: 239.1.1.11:51003 B: 239.1.127.11:51003
<b>Securities Level 2 Streaming Channels</b>	Trade (50)	20	A: 239.1.1.3:51000	520	A: 239.1.1.13:51000
	Trade Cancel (51)		B: 239.1.127.3:51000		B: 239.1.127.13:51000
	Nominal Price (40)	21	A: 239.1.1.3:51001	521	A: 239.1.1.13:51001
	Indicative Equilibrium Price (41)		B: 239.1.127.3:51001		B: 239.1.127.13:51001
	Closing Price (62)	22	A: 239.1.1.3:51002	522	A: 239.1.1.13:51002
	Aggregate Order Book Update (53)		B: 239.1.127.3:51002		B: 239.1.127.13:51002
	Statistics (60)	23	A: 239.1.1.3:51003	523	A: 239.1.1.13:51003
	Yield (44)		B: 239.1.127.3:51003		B: 239.1.127.13:51003
	VCM Trigger (23)	24	A: 239.1.1.3:51004	524	A: 239.1.1.13:51004
Reference Price (43)	B: 239.1.127.3:51004		B: 239.1.127.13:51004		
Order Imbalance (56)	25	A: 239.1.1.3:51005 B: 239.1.127.3:51005	525	A: 239.1.1.13:51005 B: 239.1.127.13:51005	
	26	A: 239.1.1.3:51006 B: 239.1.127.3:51006	526	A: 239.1.1.13:51006 B: 239.1.127.13:51006	
	27	A: 239.1.1.3:51007 B: 239.1.127.3:51007	527	A: 239.1.1.13:51007 B: 239.1.127.13:51007	
	28	A: 239.1.1.3:51008 B: 239.1.127.3:51008	528	A: 239.1.1.13:51008 B: 239.1.127.13:51008	
<b>Securities DR Signal Channel</b>	Disaster Recovery Signal (105)	9	A: 239.1.1.1:51008 B: 239.1.127.1:51008		

Order and trade activities of tradable securities are distributed among channels 20 to 28 on a daily basis, and this may result in heartbeat messages only being disseminated via some of the channels throughout the day if the channels are not assigned for any securities. Nonetheless, clients should always tune in to listen to all channels at all times for order and trade updates.

## Securities Market & Index Datafeed Products (OMD-C)

### 2.1.3 OMD Securities FullTick (streaming)

Multicast Service	Contents	Real-time Market Data Services		Refresh Snapshot Data Services	
		Channel ID	Multicast Channel Subscriptions	Channel ID	Multicast Channel Subscriptions
<b>Securities Reference Data Channel</b>	Market Definition (10) Security Definition (11) Liquidity Provider (13) Currency Rate (14)	1	A: 239.1.1.1:51000 B: 239.1.127.1:51000	501	A: 239.1.1.11:51000 B: 239.1.127.11:51000
<b>Securities Status Channel</b>	Trading Session Status (20) Security Status (21)	2	A: 239.1.1.1:51001 B: 239.1.127.1:51001	502	A: 239.1.1.11:51001 B: 239.1.127.11:51001
<b>Securities Full Order Book Channels</b>	Trade (50)	30	A: 239.1.1.4:51000 B: 239.1.127.4:51000	530	A: 239.1.1.14:51000 B: 239.1.127.14:51000
	Trade Cancel (51) Add Order (30)	31	A: 239.1.1.4:51001 B: 239.1.127.4:51001	531	A: 239.1.1.14:51001 B: 239.1.127.14:51001
	Modify Order (31) Delete Order (32)		A: 239.1.1.4:51002 B: 239.1.127.4:51002		532
	Indicative Equilibrium Price (41) VCM Trigger (23)	32	A: 239.1.1.4:51002 B: 239.1.127.4:51002	532	
	Reference Price (43) Order Imbalance (56)		33		A: 239.1.1.4:51003 B: 239.1.127.4:51003
		34		A: 239.1.1.4:51004 B: 239.1.127.4:51004	534
			35	A: 239.1.1.4:51005 B: 239.1.127.4:51005	
		36		A: 239.1.1.4:51006 B: 239.1.127.4:51006	536
			37	A: 239.1.1.4:51007 B: 239.1.127.4:51007	
		38		A: 239.1.1.4:51008 B: 239.1.127.4:51008	538
<b>Securities DR Signal Channel</b>	Disaster Recovery Signal (105)		9	A: 239.1.1.1:51008 B: 239.1.127.1:51008	

Order and trade activities of tradable securities are distributed among channels 30 to 38 on a daily basis, and this may result in heartbeat messages only being disseminated via some of the channels throughout the day if the channels are not assigned for any securities. Nonetheless, clients should always tune in to listen to all channels at all times for order and trade updates.

## Securities Market & Index Datafeed Products (OMD-C)

### 2.1.4 OMD Index (Streaming)

Multicast Service	Contents	Real-time Market Data Services		Refresh Snapshot Data Services	
		Channel ID	Multicast Channel Subscriptions	Channel ID	Multicast Channel Subscriptions
<b>HSI Index Channel</b>	Index Definition (70) Index Data (71)	41	A: 239.1.1.5:51000 B: 239.1.127.5:51000	541	A: 239.1.1.15:51000 B: 239.1.127.15:51000
<b>CSI Index Channel</b>	Index Definition (70) Index Data (71)	42	A: 239.1.1.6:51000 B: 239.1.127.6:51000	542	A: 239.1.1.16:51000 B: 239.1.127.16:51000
<b>S&amp;P Index Channel</b>	Index Definition (70) Index Data (71)	43	A: 239.1.1.7:51000 B: 239.1.127.7:51000	543	A: 239.1.1.17:51000 B: 239.1.127.17:51000
<b>TR Index Channel</b>	Index Definition (70) Index Data (71)	44	A: 239.1.1.7:51001 B: 239.1.127.7:51001	544	A: 239.1.1.17:51001 B: 239.1.127.17:51001
<b>Index DR Signal Channel</b>	Disaster Recovery Signal (105)	49	A: 239.1.1.7:51008 B: 239.1.127.7:51008		

### 2.1.5 Conflated Broker Queue

Multicast Service	Contents	Real-time Market Data Services		Refresh Snapshot Data Services	
		Channel ID	Multicast Channel Subscriptions	Channel ID	Multicast Channel Subscriptions
<b>Securities Market Broker Queue Channel</b>	Broker Queue (54)	60	A: 239.1.1.8:51000 B: 239.1.127.8:51000	560	A: 239.1.1.18:51000 B: 239.1.127.18:51000

### 2.1.6 Odd Lot Order (Streaming)

Multicast Service	Contents	Real-time Market Data Services		Refresh Snapshot Data Services	
		Channel ID	Multicast Channel Subscriptions	Channel ID	Multicast Channel Subscriptions
<b>Securities Market Odd Lot Order Channel</b>	Add Odd Lot Oder (33) Delete Odd Lot Order (34)	70	A: 239.1.1.9:51000 B: 239.1.127.9:51000	570	A: 239.1.1.19:51000 B: 239.1.127.19:51000
		71	A: 239.1.1.9:51001 B: 239.1.127.9:51001	571	A: 239.1.1.19:51001 B: 239.1.127.19:51001
		72	A: 239.1.1.9:51002 B: 239.1.127.9:51002	572	A: 239.1.1.19:51002 B: 239.1.127.19:51002
		73	A: 239.1.1.9:51003 B: 239.1.127.9:51003	573	A: 239.1.1.19:51003 B: 239.1.127.19:51003
		74	A: 239.1.1.9:51004 B: 239.1.127.9:51004	574	A: 239.1.1.19:51004 B: 239.1.127.19:51004
		75	A: 239.1.1.9:51005 B: 239.1.127.9:51005	575	A: 239.1.1.19:51005 B: 239.1.127.19:51005
		76	A: 239.1.1.9:51006 B: 239.1.127.9:51006	576	A: 239.1.1.19:51006 B: 239.1.127.19:51006
		77	A: 239.1.1.9:51007	577	A: 239.1.1.19:51007

## Securities Market & Index Datafeed Products (OMD-C)

	B: 239.1.127.9:51007		B: 239.1.127.19:51007
78	A: 239.1.1.9:51008	578	A: 239.1.1.19:51008
	B: 239.1.127.9:51008		B: 239.1.127.19:51008

### 2.1.7 Stock Connect Data (Streaming)

Multicast Service	Contents	Real-time Market Data Services		Refresh Snapshot Data Services	
		Channel ID	Multicast Channel Subscriptions	Channel ID	Multicast Channel Subscriptions
<b>Northbound Stock Connect Market Information Channel</b>	Stock Connect Daily Quota Balance (80) Stock Connect Market Turnover (81)	80	A: 239.1.1.121:51000 B: 239.1.127.121:51000	580	A: 239.1.1.121:61000 B: 239.1.127.121:61000
<b>Southbound Stock Connect Market Information Channel</b>	Stock Connect Market Turnover (81)	81	A: 239.1.1.121:51001 B: 239.1.127.121:51001	581	A: 239.1.1.121:61001 B: 239.1.127.121:61001

### 2.1.8 HKEX OMD Retransmission Unicast Connectivity

HKEX provides a Retransmission Service to its OMD clients to recover lost multicast packet. Functional details of the Retransmission Service are provided in the Interface Specification. Find below the Unicast Addresses to connect to the OMD Retransmission Servers in **OMD-C Production Environment**.

Retransmission Server	IP Unicast Address
Primary server in primary site	10.1.90.82:55455
Secondary server in primary site	10.1.90.83:55455
Primary server in DR site	10.2.90.82:55455
Secondary server in DR site	10.2.90.83:55455

2.2 Readiness Test Environment Connectivity Details

2.2.1 OMD Securities Standard (conflated)

Multicast Service	Contents	Real-time Market Data Services		Refresh Snapshot Data Services	
		Channel ID	Multicast Channel Subscriptions	Channel ID	Multicast Channel Subscriptions
<b>Securities Reference Data Channel</b>	Market Definition (10) Security Definition (11) Liquidity Provider (13) Currency Rate (14)	1	A: 239.1.1.21:51000 B: 239.1.127.21:51000	501	A: 239.1.1.31:51000 B: 239.1.127.31:51000
<b>Securities Status Channel</b>	Trading Session Status (20) Security Status (21)	2	A: 239.1.1.21:51001 B: 239.1.127.21:51001	502	A: 239.1.1.31:51001 B: 239.1.127.31:51001
<b>Securities Value Add Data Channel</b>	Market Turnover (61)	3	A: 239.1.1.21:51002 B: 239.1.127.21:51002	503	A: 239.1.1.31:51002 B: 239.1.127.31:51002
<b>Securities News Channel</b>	News (22)	4	A: 239.1.1.21:51003 B: 239.1.127.21:51003	504	A: 239.1.1.31:51003 B: 239.1.127.31:51003
<b>Securities Level 2 Conflated Channels</b>	Trade Ticker (52) Nominal Price (40) Indicative Equilibrium Price (41) Closing Price (62) Aggregate Order Book Update (53) Statistics (60) Yield (44) Broker Queue (54) VCM Trigger (23) Reference Price (43) Order Imbalance (56)	10	A: 239.1.1.22:51000 B: 239.1.127.22:51000	510	A: 239.1.1.32:51000 B: 239.1.127.32:51000
<b>Securities DR Signal Channel</b>	Disaster Recovery Signal (105)	9	A: 239.1.1.21:51008 B: 239.1.127.21:51008		

## Securities Market & Index Datafeed Products (OMD-C)

### 2.2.2 OMD Securities Premium (streaming)

		Real-time Market Data Services		Refresh Snapshot Data Services	
Multicast Service	Contents	Channel ID	Multicast Channel Subscriptions	Channel ID	Multicast Channel Subscriptions
<b>Securities Reference Data Channel</b>	Market Definition (10) Security Definition (11) Liquidity Provider (13) Currency Rate (14)	1	A: 239.1.1.21:51000 B: 239.1.127.21:51000	501	A: 239.1.1.31:51000 B: 239.1.127.31:51000
<b>Securities Status Channel</b>	Trading Session Status (20) Security Status (21)	2	A: 239.1.1.21:51001 B: 239.1.127.21:51001	502	A: 239.1.1.31:51001 B: 239.1.127.31:51001
<b>Securities Value Add Data Channel</b>	Market Turnover (61)	3	A: 239.1.1.21:51002 B: 239.1.127.21:51002	503	A: 239.1.1.31:51002 B: 239.1.127.31:51002
<b>Securities News Channel</b>	News (22)	4	A: 239.1.1.21:51003 B: 239.1.127.21:51003	504	A: 239.1.1.31:51003 B: 239.1.127.31:51003
<b>Securities Level 2 Streaming Channels</b>	Trade (50)	20	A: 239.1.1.23:51000 B: 239.1.127.23:51000	520	A: 239.1.1.33:51000 B: 239.1.127.33:51000
	Trade Cancel (51) Nominal Price (40) Indicative Equilibrium Price (41) Closing Price (62) Aggregate Order Book Update (53) Statistics (60)	21	A: 239.1.1.23:51001 B: 239.1.127.23:51001	521	A: 239.1.1.33:51001 B: 239.1.127.33:51001
	Yield (44) VCM Trigger (23) Reference Price (43) Order Imbalance (56)	22	A: 239.1.1.23:51002 B: 239.1.127.23:51002	522	A: 239.1.1.33:51002 B: 239.1.127.33:51002
		23	A: 239.1.1.23:51003 B: 239.1.127.23:51003	523	A: 239.1.1.33:51003 B: 239.1.127.33:51003
		24	A: 239.1.1.23:51004 B: 239.1.127.23:51004	524	A: 239.1.1.33:51004 B: 239.1.127.33:51004
		25	A: 239.1.1.23:51005 B: 239.1.127.23:51005	525	A: 239.1.1.33:51005 B: 239.1.127.33:51005
		26	A: 239.1.1.23:51006 B: 239.1.127.23:51006	526	A: 239.1.1.33:51006 B: 239.1.127.33:51006
		27	A: 239.1.1.23:51007 B: 239.1.127.23:51007	527	A: 239.1.1.33:51007 B: 239.1.127.33:51007
		28	A: 239.1.1.23:51008 B: 239.1.127.23:51008	528	A: 239.1.1.33:51008 B: 239.1.127.33:51008
	<b>Securities DR Signal Channel</b>	Disaster Recovery Signal (105)	9	A: 239.1.1.21:51008 B: 239.1.127.21:51008	

## Securities Market & Index Datafeed Products (OMD-C)

### 2.2.3 OMD Securities FullTick (streaming)

Multicast Service	Contents	Real-time Market Data Services		Refresh Snapshot Data Services	
		Channel ID	Multicast Channel Subscriptions	Channel ID	Multicast Channel Subscriptions
<b>Securities Reference Data Channel</b>	Market Definition (10) Security Definition (11) Liquidity Provider (13) Currency Rate (14)	1	A: 239.1.1.21:51000 B: 239.1.127.21:51000	501	A: 239.1.1.31:51000 B: 239.1.127.31:51000
<b>Securities Status Channel</b>	Trading Session Status (20) Security Status (21)	2	A: 239.1.1.21:51001 B: 239.1.127.21:51001	502	A: 239.1.1.31:51001 B: 239.1.127.31:51001
<b>Securities Full Order Book Channels</b>	Trade (50)	30	A: 239.1.1.24:51000 B: 239.1.127.24:51000	530	A: 239.1.1.34:51000 B: 239.1.127.34:51000
	Trade Cancel (51)				
	Add Order (30)				
	Modify Order (31)	31	A: 239.1.1.24:51001 B: 239.1.127.24:51001	531	A: 239.1.1.34:51001 B: 239.1.127.34:51001
	Delete Order (32)				
	Indicative Equilibrium Price (41)	32	A: 239.1.1.24:51002 B: 239.1.127.24:51002	532	A: 239.1.1.34:51002 B: 239.1.127.34:51002
	VCM Trigger (23)				
	Reference Price (43)				
	Order Imbalance (56)	33	A: 239.1.1.24:51003 B: 239.1.127.24:51003	533	A: 239.1.1.34:51003 B: 239.1.127.34:51003
		34	A: 239.1.1.24:51004 B: 239.1.127.24:51004	534	A: 239.1.1.34:51004 B: 239.1.127.34:51004
		35	A: 239.1.1.24:51005 B: 239.1.127.24:51005	535	A: 239.1.1.34:51005 B: 239.1.127.34:51005
		36	A: 239.1.1.24:51006 B: 239.1.127.24:51006	536	A: 239.1.1.34:51006 B: 239.1.127.34:51006
		37	A: 239.1.1.24:51007 B: 239.1.127.24:51007	537	A: 239.1.1.34:51007 B: 239.1.127.34:51007
		38	A: 239.1.1.24:51008 B: 239.1.127.24:51008	538	A: 239.1.1.34:51008 B: 239.1.127.34:51008
<b>Securities DR Signal Channel</b>	Disaster Recovery Signal (105)	9	A: 239.1.1.21:51008 B: 239.1.127.21:51008		



## Securities Market & Index Datafeed Products (OMD-C)

### 2.2.4 OMD Index (Streaming)

Multicast Service	Contents	Real-time Market Data Services		Refresh Snapshot Data Services	
		Channel ID	Multicast Channel Subscriptions	Channel ID	Multicast Channel Subscriptions
<b>HSI Index Channel</b>	Index Definition (70) Index Data (71)	41	A: 239.1.1.25:51000 B: 239.1.127.25:51000	541	A: 239.1.1.35:51000 B: 239.1.127.35:51000
<b>CSI Index Channel</b>	Index Definition (70) Index Data (71)	42	A: 239.1.1.26:51000 B: 239.1.127.26:51000	542	A: 239.1.1.36:51000 B: 239.1.127.36:51000
<b>S&amp;P Index Channel</b>	Index Definition (70) Index Data (71)	43	A: 239.1.1.27:51000 B: 239.1.127.27:51000	543	A: 239.1.1.37:51000 B: 239.1.127.37:51000
<b>TR Index Channel</b>	Index Definition (70) Index Data (71)	44	A: 239.1.1.27:51001 B: 239.1.127.27:51001	544	A: 239.1.1.37:51001 B: 239.1.127.37:51001
<b>Index DR Signal Channel</b>	Disaster Recovery Signal (105)	49	A: 239.1.1.27:51008 B: 239.1.127.27:51008		

### 2.2.5 Conflated Broker Queue

Multicast Service	Contents	Real-time Market Data Services		Refresh Snapshot Data Services	
		Channel ID	Multicast Channel Subscriptions	Channel ID	Multicast Channel Subscriptions
<b>Securities Market Broker Queue Channel</b>	Broker Queue (54)	60	A: 239.1.1.28:51000 B: 239.1.127.28:51000	560	A: 239.1.1.38:51000 B: 239.1.127.38:51000

### 2.2.6 Odd Lot Order (Streaming)

Multicast Service	Contents	Real-time Market Data Services		Refresh Snapshot Data Services	
		Channel ID	Multicast Channel Subscriptions	Channel ID	Multicast Channel Subscriptions
<b>Securities Market Odd Lot Order Channel</b>	Add Odd Lot Oder (33) Delete Odd Lot Order (34)	70	A: 239.1.1.29:51000 B: 239.1.127.29:51000	570	A: 239.1.1.39:51000 B: 239.1.127.39:51000
		71	A: 239.1.1.29:51001 B: 239.1.127.29:51001	571	A: 239.1.1.39:51001 B: 239.1.127.39:51001
		72	A: 239.1.1.29:51002 B: 239.1.127.29:51002	572	A: 239.1.1.39:51002 B: 239.1.127.39:51002
		73	A: 239.1.1.29:51003 B: 239.1.127.29:51003	573	A: 239.1.1.39:51003 B: 239.1.127.39:51003
		74	A: 239.1.1.29:51004 B: 239.1.127.29:51004	574	A: 239.1.1.39:51004 B: 239.1.127.39:51004
		75	A: 239.1.1.29:51005 B: 239.1.127.29:51005	575	A: 239.1.1.39:51005 B: 239.1.127.39:51005
		76	A: 239.1.1.29:51006 B: 239.1.127.29:51006	576	A: 239.1.1.39:51006 B: 239.1.127.39:51006
		77	A: 239.1.1.29:51007	577	A: 239.1.1.39:51007

## Securities Market & Index Datafeed Products (OMD-C)

	B: 239.1.127.29:51007		B: 239.1.127.39:51007
78	A: 239.1.1.29:51008 B: 239.1.127.29:51008	578	A: 239.1.1.39:51008 B: 239.1.127.39:51008

### 2.2.7 Stock Connect Data (Streaming)

Multicast Service	Contents	Real-time Market Data Services		Refresh Snapshot Data Services	
		Channel ID	Multicast Channel Subscriptions	Channel ID	Multicast Channel Subscriptions
<b>Northbound Stock Connect Market Information Channel</b>	Stock Connect Daily Quota Balance (80) Stock Connect Market Turnover (81)	80	A: 239.1.1.122:51000 B: 239.1.127.122:51000	580	A: 239.1.1.122:61000 B: 239.1.127.122:61000
<b>Southbound Stock Connect Market Information Channel</b>	Stock Connect Market Turnover (81)	81	A: 239.1.1.122:51001 B: 239.1.127.122:51001	581	A: 239.1.1.122:61001 B: 239.1.127.122:61001

### 2.2.8 HKEX OMD Retransmission Unicast Connectivity

HKEX provides a Retransmission Service to its OMD clients to recover multicast packet loss. Functional details of the Retransmission Service are provided in the Interface Specification. Find below the Unicast Addresses to connect to the OMD Retransmission Servers in **OMD-C Readiness Test Environment**.

Retransmission Server	IP Unicast Address
Primary server in primary site	10.1.90.41:55455
Secondary server in primary site	10.1.90.42:55455
Primary server in DR site	10.2.90.41:55455
Secondary server in DR site	10.2.90.42:55455

## 2.3 AMS/3 OCG End-to-End Test Environment Connectivity Details

### 2.3.1 OMD Securities Standard (conflated)

Multicast Service	Contents	Real-time Market Data Services		Refresh Snapshot Data Services	
		Channel ID	Multicast Channel Subscriptions	Channel ID	Multicast Channel Subscriptions
<b>Securities Reference Data Channel</b>	Market Definition (10) Security Definition (11) Liquidity Provider (13) Currency Rate (14)	1	A: 239.1.1.81:51000 B: 239.1.127.81:51000	501	A: 239.1.1.81:61000 B: 239.1.127.81:61000
<b>Securities Status Channel</b>	Trading Session Status (20) Security Status (21)	2	A: 239.1.1.81:51001 B: 239.1.127.81:51001	502	A: 239.1.1.81:61001 B: 239.1.127.81:61001
<b>Securities Value Add Data Channel</b>	Market Turnover (61)	3	A: 239.1.1.81:51002 B: 239.1.127.81:51002	503	A: 239.1.1.81:61002 B: 239.1.127.81:61002
<b>Securities News Channel</b>	News (22)	4	A: 239.1.1.81:51003 B: 239.1.127.81:51003	504	A: 239.1.1.81:61003 B: 239.1.127.81:61003
<b>Securities Level 2 Conflated Channels</b>	Trade Ticker (52) Nominal Price (40) Indicative Equilibrium Price (41) Closing Price (62) Aggregate Order Book Update (53) Statistics (60) Yield (44) Broker Queue (54) VCM Trigger (23) Reference Price (43) Order Imbalance (56)	10	A: 239.1.1.82:51000 B: 239.1.127.82:51000	510	A: 239.1.1.82:61000 B: 239.1.127.82:61000
<b>Securities DR Signal Channel</b>	Disaster Recovery Signal (105)	9	A: 239.1.1.81:51008 B: 239.1.127.81:51008		

## Securities Market & Index Datafeed Products (OMD-C)

### 2.3.2 OMD Securities Premium (streaming)

Multicast Service	Contents	Real-time Market Data Services		Refresh Snapshot Data Services	
		Channel ID	Multicast Channel Subscriptions	Channel ID	Multicast Channel Subscriptions
<b>Securities Reference Data Channel</b>	Market Definition (10) Security Definition (11) Liquidity Provider (13) Currency Rate (14)	1	A: 239.1.1.81:51000 B: 239.1.127.81:51000	501	A: 239.1.1.81:61000 B: 239.1.127.81:61000
<b>Securities Status Channel</b>	Trading Session Status (20) Security Status (21)	2	A: 239.1.1.81:51001 B: 239.1.127.81:51001	502	A: 239.1.1.81:61001 B: 239.1.127.81:61001
<b>Securities Value Add Data Channel</b>	Market Turnover (61)	3	A: 239.1.1.81:51002 B: 239.1.127.81:51002	503	A: 239.1.1.81:61002 B: 239.1.127.81:61002
<b>Securities News Channel</b>	News (22)	4	A: 239.1.1.81:51003 B: 239.1.127.81:51003	504	A: 239.1.1.81:61003 B: 239.1.127.81:61003
<b>Securities Level 2 Streaming Channels</b>	Trade (50)	20	A: 239.1.1.83:51000 B: 239.1.127.83:51000	520	A: 239.1.1.83:61000 B: 239.1.127.83:61000
	Trade Cancel (51)				
	Nominal Price (40)				
	Indicative Equilibrium Price (41)	21	A: 239.1.1.83:51001 B: 239.1.127.83:51001	521	A: 239.1.1.83:61001 B: 239.1.127.83:61001
	Closing Price (62)				
	Aggregate Order Book Update (53)	22	A: 239.1.1.83:51002 B: 239.1.127.83:51002	522	A: 239.1.1.83:61002 B: 239.1.127.83:61002
	Statistics (60)				
	Yield (44)	23	A: 239.1.1.83:51003 B: 239.1.127.83:51003	523	A: 239.1.1.83:61003 B: 239.1.127.83:61003
VCM Trigger (23)					
Reference Price (43)					
Order Imbalance (56)	24	A: 239.1.1.83:51004 B: 239.1.127.83:51004	524	A: 239.1.1.83:61004 B: 239.1.127.83:61004	
		25	A: 239.1.1.83:51005 B: 239.1.127.83:51005	525	A: 239.1.1.83:61005 B: 239.1.127.83:61005
		26	A: 239.1.1.83:51006 B: 239.1.127.83:51006	526	A: 239.1.1.83:61006 B: 239.1.127.83:61006
		27	A: 239.1.1.83:51007 B: 239.1.127.83:51007	527	A: 239.1.1.83:61007 B: 239.1.127.83:61007
		28	A: 239.1.1.83:51008 B: 239.1.127.83:51008	528	A: 239.1.1.83:61008 B: 239.1.127.83:61008
<b>Securities DR Signal Channel</b>	Disaster Recovery Signal (105)	9	A: 239.1.1.81:51008 B: 239.1.127.81:51008		

## Securities Market & Index Datafeed Products (OMD-C)

### 2.3.3 OMD Securities FullTick (streaming)

Multicast Service	Contents	Real-time Market Data Services		Refresh Snapshot Data Services	
		Channel ID	Multicast Channel Subscriptions	Channel ID	Multicast Channel Subscriptions
<b>Securities Reference Data Channel</b>	Market Definition (10) Security Definition (11) Liquidity Provider (13) Currency Rate (14)	1	A: 239.1.1.81:51000 B: 239.1.127.81:51000	501	A: 239.1.1.81:61000 B: 239.1.127.81:61000
<b>Securities Status Channel</b>	Trading Session Status (20) Security Status (21)	2	A: 239.1.1.81:51001 B: 239.1.127.81:51001	502	A: 239.1.1.81:61001 B: 239.1.127.81:61001
<b>Securities Full Order Book Channels</b>	Trade (50)	30	A: 239.1.1.84:51000 B: 239.1.127.84:51000	530	A: 239.1.1.84:61000 B: 239.1.127.84:61000
	Trade Cancel (51)				
	Add Order (30)				
	Modify Order (31)	31	A: 239.1.1.84:51001 B: 239.1.127.84:51001	531	A: 239.1.1.84:61001 B: 239.1.127.84:61001
	Delete Order (32)				
	Indicative Equilibrium Price (41)	32	A: 239.1.1.84:51002 B: 239.1.127.84:51002	532	A: 239.1.1.84:61002 B: 239.1.127.84:61002
	VCM Trigger (23)				
	Reference Price (43)				
	Order Imbalance (56)	33	A: 239.1.1.84:51003 B: 239.1.127.84:51003	533	A: 239.1.1.84:61003 B: 239.1.127.84:61003
		34	A: 239.1.1.84:51004 B: 239.1.127.84:51004	534	A: 239.1.1.84:61004 B: 239.1.127.84:61004
	35	A: 239.1.1.84:51005 B: 239.1.127.84:51005	535	A: 239.1.1.84:61005 B: 239.1.127.84:61005	
	36	A: 239.1.1.84:51006 B: 239.1.127.84:51006	536	A: 239.1.1.84:61006 B: 239.1.127.84:61006	
	37	A: 239.1.1.84:51007 B: 239.1.127.84:51007	537	A: 239.1.1.84:61007 B: 239.1.127.84:61007	
	38	A: 239.1.1.84:51008 B: 239.1.127.84:51008	538	A: 239.1.1.84:61008 B: 239.1.127.84:61008	
<b>Securities DR Signal Channel</b>	Disaster Recovery Signal (105)	9	A: 239.1.1.81:51008 B: 239.1.127.81:51008		

## Securities Market & Index Datafeed Products (OMD-C)

### 2.3.4 OMD Index (Streaming)

Multicast Service	Contents	Real-time Market Data Services		Refresh Snapshot Data Services	
		Channel ID	Multicast Channel Subscriptions	Channel ID	Multicast Channel Subscriptions
<b>HSI Index Channel</b>	Index Definition (70) Index Data (71)	41	A: 239.1.1.85:51000 B: 239.1.127.85:51000	541	A: 239.1.1.85:61000 B: 239.1.127.85:61000
<b>CSI Index Channel</b>	Index Definition (70) Index Data (71)	42	A: 239.1.1.86:51000 B: 239.1.127.86:51000	542	A: 239.1.1.86:61000 B: 239.1.127.86:61000
<b>S&amp;P Index Channel</b>	Index Definition (70) Index Data (71)	43	A: 239.1.1.87:51000 B: 239.1.127.87:51000	543	A: 239.1.1.87:61000 B: 239.1.127.87:61000
<b>TR Index Channel</b>	Index Definition (70) Index Data (71)	44	A: 239.1.1.87:51001 B: 239.1.127.87:51001	544	A: 239.1.1.87:61001 B: 239.1.127.87:61001
<b>Index DR Signal Channel</b>	Disaster Recovery Signal (105)	49	A: 239.1.1.87:51008 B: 239.1.127.87:51008		

### 2.3.5 Conflated Broker Queue

Multicast Service	Contents	Real-time Market Data Services		Refresh Snapshot Data Services	
		Channel ID	Multicast Channel Subscriptions	Channel ID	Multicast Channel Subscriptions
<b>Securities Market Broker Queue Channel</b>	Broker Queue (54)	60	A: 239.1.1.88:51000 B: 239.1.127.88:51000	560	A: 239.1.1.88:61000 B: 239.1.127.88:61000

### 2.3.6 Odd Lot Order (Streaming)

Multicast Service	Contents	Real-time Market Data Services		Refresh Snapshot Data Services	
		Channel ID	Multicast Channel Subscriptions	Channel ID	Multicast Channel Subscriptions
<b>Securities Market Odd Lot Order Channel</b>	Add Odd Lot Oder (33) Delete Odd Lot Order (34)	70	A: 239.1.1.89:51000 B: 239.1.127.89:51000	570	A: 239.1.1.89:61000 B: 239.1.127.89:61000
		71	A: 239.1.1.89:51001 B: 239.1.127.89:51001	571	A: 239.1.1.89:61001 B: 239.1.127.89:61001
		72	A: 239.1.1.89:51002 B: 239.1.127.89:51002	572	A: 239.1.1.89:61002 B: 239.1.127.89:61002
		73	A: 239.1.1.89:51003 B: 239.1.127.89:51003	573	A: 239.1.1.89:61003 B: 239.1.127.89:61003
		74	A: 239.1.1.89:51004 B: 239.1.127.89:51004	574	A: 239.1.1.89:61004 B: 239.1.127.89:61004
		75	A: 239.1.1.89:51005 B: 239.1.127.89:51005	575	A: 239.1.1.89:61005 B: 239.1.127.89:61005
		76	A: 239.1.1.89:51006 B: 239.1.127.89:51006	576	A: 239.1.1.89:61006 B: 239.1.127.89:61006

## Securities Market & Index Datafeed Products (OMD-C)

77	A: 239.1.1.89:51007 B: 239.1.127.89:51007	577	A: 239.1.1.89:61007 B: 239.1.127.89:61007
78	A: 239.1.1.89:51008 B: 239.1.127.89:51008	578	A: 239.1.1.89:61008 B: 239.1.127.89:61008

### 2.3.7 Stock Connect Data (Streaming)

Multicast Service	Contents	Real-time Market Data Services		Refresh Snapshot Data Services	
		Channel ID	Multicast Channel Subscriptions	Channel ID	Multicast Channel Subscriptions
<b>Northbound Stock Connect Market Information Channel</b>	Stock Connect Daily Quota Balance (80) Stock Connect Market Turnover (81)	80	A: 239.1.1.125:51000 B: 239.1.127.125:51000	580	A: 239.1.1.125:61000 B: 239.1.127.125:61000
<b>Southbound Stock Connect Market Information Channel</b>	Stock Connect Market Turnover (81)	81	A: 239.1.1.125:51001 B: 239.1.127.125:51001	581	A: 239.1.1.125:61001 B: 239.1.127.125:61001

### 2.3.8 HKEX OMD Retransmission Unicast Connectivity

HKEX provides a Retransmission Service to its OMD clients to recover multicast packet loss. Functional details of the Retransmission Service are provided in the Interface Specification. Find below the Unicast Address to connect to the OMD Retransmission Servers in AMS/3 **OCG End-to-End Test Environment**.

	IP Unicast Address
Retransmission Server	10.1.90.70:55455

## 2.4 OTP-C OCG End-to-End Test Environment Connectivity Details

### 2.4.1 OMD Securities Standard (conflated)

Multicast Service	Contents	Real-time Market Data Services		Refresh Snapshot Data Services	
		Channel ID	Multicast Channel Subscriptions	Channel ID	Multicast Channel Subscriptions
<b>Securities Reference Data Channel</b>	Market Definition (10) Security Definition (11) Liquidity Provider (13) Currency Rate (14)	1	A: 239.1.1.81:53550 B: 239.1.127.81:53550	501	A: 239.1.1.81:63550 B: 239.1.127.81:63550
<b>Securities Status Channel</b>	Trading Session Status (20)	2	A: 239.1.1.81:53551 B: 239.1.127.81:53551	502	A: 239.1.1.81:63551 B: 239.1.127.81:63551
<b>Securities Value Add Data Channel</b>	Market Turnover (61)	3	A: 239.1.1.81:53552 B: 239.1.127.81:53552	503	A: 239.1.1.81:63552 B: 239.1.127.81:63552
<b>Securities News Channel</b>	News (22)	4	A: 239.1.1.81:53553 B: 239.1.127.81:53553	504	A: 239.1.1.81:63553 B: 239.1.127.81:63553
<b>Securities Level 2 Conflated Channels</b>	Trade Ticker (52) Nominal Price (40) Indicative Equilibrium Price (41) Closing Price (62) Aggregate Order Book Update (53) Statistics (60) Yield (44) Broker Queue (54) VCM Trigger (23) Reference Price (43) Order Imbalance (56) Security Status (21)	10	A: 239.1.1.82:53550 B: 239.1.127.82:53550	510	A: 239.1.1.82:63550 B: 239.1.127.82:63550
<b>Securities DR Signal Channel</b>	Disaster Recovery Signal (105)	9	A: 239.1.1.81:53558 B: 239.1.127.81:53558		



## Securities Market & Index Datafeed Products (OMD-C)

### 2.4.2 OMD Securities Premium (streaming)

Multicast Service	Contents	Real-time Market Data Services		Refresh Snapshot Data Services	
		Channel ID	Multicast Channel Subscriptions	Channel ID	Multicast Channel Subscriptions
<b>Securities Reference Data Channel</b>	Market Definition (10) Security Definition (11) Liquidity Provider (13) Currency Rate (14)	1	A: 239.1.1.81:53550 B: 239.1.127.81:53550	501	A: 239.1.1.81:63550 B: 239.1.127.81:63550
<b>Securities Status Channel</b>	Trading Session Status (20)	2	A: 239.1.1.81: 51001 B: 239.1.127.81:53551	502	A: 239.1.1.81:63551 B: 239.1.127.81:63551
<b>Securities Value Add Data Channel</b>	Market Turnover (61)	3	A: 239.1.1.81:53552 B: 239.1.127.81:53552	503	A: 239.1.1.81:63552 B: 239.1.127.81:63552
<b>Securities News Channel</b>	News (22)	4	A: 239.1.1.81:53553 B: 239.1.127.81:53553	504	A: 239.1.1.81:63553 B: 239.1.127.81:63553
<b>Securities Level 2 Streaming Channels</b>	Trade (50)	20	A: 239.1.1.83:53550 B: 239.1.127.83:53550	520	A: 239.1.1.83:63550 B: 239.1.127.83:63550
	Trade Cancel (51)				
	Nominal Price (40)				
	Indicative Equilibrium Price (41)	21	A: 239.1.1.83:53551 B: 239.1.127.83:53551	521	A: 239.1.1.83:63551 B: 239.1.127.83:63551
	Closing Price (62)				
	Aggregate Order Book Update (53)	22	A: 239.1.1.83:53552 B: 239.1.127.83:53552	522	A: 239.1.1.83:63552 B: 239.1.127.83:63552
	Statistics (60)				
	Yield (44)	23	A: 239.1.1.83:53553 B: 239.1.127.83:53553	523	A: 239.1.1.83:63553 B: 239.1.127.83:63553
VCM Trigger (23)					
Reference Price (43)					
Order Imbalance (56)	24	A: 239.1.1.83:53554 B: 239.1.127.83:53554	524	A: 239.1.1.83:63554 B: 239.1.127.83:63554	
Security Status (21)					
		25	A: 239.1.1.83:53555 B: 239.1.127.83:53555	525	A: 239.1.1.83:63555 B: 239.1.127.83:63555
		26	A: 239.1.1.83:53556 B: 239.1.127.83:53556	526	A: 239.1.1.83:63556 B: 239.1.127.83:63556
		27	A: 239.1.1.83:53557 B: 239.1.127.83:53557	527	A: 239.1.1.83:63557 B: 239.1.127.83:63557
		28	A: 239.1.1.83:53558 B: 239.1.127.83:53558	528	A: 239.1.1.83:63558 B: 239.1.127.83:63558
<b>Securities DR Signal Channel</b>	Disaster Recovery Signal (105)	9	A: 239.1.1.81:53558 B: 239.1.127.81:53558		

## Securities Market & Index Datafeed Products (OMD-C)

### 2.4.3 OMD Securities FullTick (streaming)

Multicast Service	Contents	Real-time Market Data Services		Refresh Snapshot Data Services	
		Channel ID	Multicast Channel Subscriptions	Channel ID	Multicast Channel Subscriptions
<b>Securities Reference Data Channel</b>	Market Definition (10) Security Definition (11) Liquidity Provider (13) Currency Rate (14)	1	A: 239.1.1.81:53550 B: 239.1.127.81:53550	501	A: 239.1.1.81:63550 B: 239.1.127.81:63550
<b>Securities Status Channel</b>	Trading Session Status (20)	2	A: 239.1.1.81:53551 B: 239.1.127.81:53551	502	A: 239.1.1.81:63551 B: 239.1.127.81:63551
<b>Securities Full Order Book Channels</b>	Trade (50)	30	A: 239.1.1.84:53550	530	A: 239.1.1.84:63550
	Trade Cancel (51)		B: 239.1.127.84:53550		B: 239.1.127.84:63550
	Add Order (30)	31	A: 239.1.1.84:53551	531	A: 239.1.1.84:63551
	Modify Order (31)		B: 239.1.127.84:53551		B: 239.1.127.84:63551
	Delete Order (32)	32	A: 239.1.1.84:53552	532	A: 239.1.1.84:63552
	Indicative Equilibrium Price (41)		B: 239.1.127.84:53552		B: 239.1.127.84:63552
	VCM Trigger (23)	33	A: 239.1.1.84:53553	533	A: 239.1.1.84:63553
	Reference Price (43)		B: 239.1.127.84:53553		B: 239.1.127.84:63553
	Order Imbalance (56)	34	A: 239.1.1.84:53554	534	A: 239.1.1.84:63554
	Security Status (21)		B: 239.1.127.84:53554		B: 239.1.127.84:63554
	35	A: 239.1.1.84:53555 B: 239.1.127.84:53555	535	A: 239.1.1.84:63555 B: 239.1.127.84:63555	
	36	A: 239.1.1.84:53556 B: 239.1.127.84:53556	536	A: 239.1.1.84:63556 B: 239.1.127.84:63556	
	37	A: 239.1.1.84:53557 B: 239.1.127.84:53557	537	A: 239.1.1.84:63557 B: 239.1.127.84:63557	
	38	A: 239.1.1.84:53558 B: 239.1.127.84:53558	538	A: 239.1.1.84:63558 B: 239.1.127.84:63558	
<b>Securities DR Signal Channel</b>	Disaster Recovery Signal (105)	9	A: 239.1.1.81:53558 B: 239.1.127.81:53558		

## Securities Market & Index Datafeed Products (OMD-C)

### 2.4.4 OMD Index (Streaming)

Multicast Service	Contents	Real-time Market Data Services		Refresh Snapshot Data Services	
		Channel ID	Multicast Channel Subscriptions	Channel ID	Multicast Channel Subscriptions
<b>HSI Index Channel</b>	Index Definition (70) Index Data (71)	41	A: 239.1.1.85:53550 B: 239.1.127.85:53550	541	A: 239.1.1.85:63550 B: 239.1.127.85:63550
<b>CSI Index Channel</b>	Index Definition (70) Index Data (71)	42	A: 239.1.1.86:53550 B: 239.1.127.86:53550	542	A: 239.1.1.86:63550 B: 239.1.127.86:63550
<b>S&amp;P Index Channel</b>	Index Definition (70) Index Data (71)	43	A: 239.1.1.87:53550 B: 239.1.127.87:53550	543	A: 239.1.1.87:63550 B: 239.1.127.87:63550
<b>TR Index Channel</b>	Index Definition (70) Index Data (71)	44	A: 239.1.1.87:53551 B: 239.1.127.87:53551	544	A: 239.1.1.87:63551 B: 239.1.127.87:63551
<b>Index DR Signal Channel</b>	Disaster Recovery Signal (105)	49	A: 239.1.1.87:53558 B: 239.1.127.87:53558		

### 2.4.5 Conflated Broker Queue

Multicast Service	Contents	Real-time Market Data Services		Refresh Snapshot Data Services	
		Channel ID	Multicast Channel Subscriptions	Channel ID	Multicast Channel Subscriptions
<b>Securities Market Broker Queue Channel</b>	Broker Queue (54)	60	A: 239.1.1.88:53550 B: 239.1.127.88:53550	560	A: 239.1.1.88:63550 B: 239.1.127.88:63550

### 2.4.6 Odd Lot Order (Streaming)

Multicast Service	Contents	Real-time Market Data Services		Refresh Snapshot Data Services	
		Channel ID	Multicast Channel Subscriptions	Channel ID	Multicast Channel Subscriptions
<b>Securities Market Odd Lot Order Channel</b>	Add Odd Lot Oder (33) Delete Odd Lot Order (34)	70	A: 239.1.1.89:53550 B: 239.1.127.89:53550	570	A: 239.1.1.89:63550 B: 239.1.127.89:63550
		71	A: 239.1.1.89:53551 B: 239.1.127.89:53551	571	A: 239.1.1.89:63551 B: 239.1.127.89:63551
		72	A: 239.1.1.89:53552 B: 239.1.127.89:53552	572	A: 239.1.1.89:63552 B: 239.1.127.89:63552
		73	A: 239.1.1.89:53553 B: 239.1.127.89:53553	573	A: 239.1.1.89:63553 B: 239.1.127.89:63553
		74	A: 239.1.1.89:53554 B: 239.1.127.89:53554	574	A: 239.1.1.89:63554 B: 239.1.127.89:63554
		75	A: 239.1.1.89:53555 B: 239.1.127.89:53555	575	A: 239.1.1.89:63555 B: 239.1.127.89:63555
		76	A: 239.1.1.89:53556 B: 239.1.127.89:53556	576	A: 239.1.1.89:63556 B: 239.1.127.89:63556

## Securities Market & Index Datafeed Products (OMD-C)

77	A: 239.1.1.89:53557 B: 239.1.127.89:53557	577	A: 239.1.1.89:63557 B: 239.1.127.89:63557
78	A: 239.1.1.89:53558 B: 239.1.127.89:53558	578	A: 239.1.1.89:63558 B: 239.1.127.89:63558

### 2.4.7 Stock Connect Data (Streaming)

Multicast Service	Contents	Real-time Market Data Services		Refresh Snapshot Data Services	
		Channel ID	Multicast Channel Subscriptions	Channel ID	Multicast Channel Subscriptions
<b>Northbound Stock Connect Market Information Channel</b>	Stock Connect Daily Quota Balance (80) Stock Connect Market Turnover (81)	80	A: 239.1.1.125:53550 B: 239.1.127.125:53550	580	A: 239.1.1.125:63550 B: 239.1.127.125:63550
<b>Southbound Stock Connect Market Information Channel</b>	Stock Connect Market Turnover (81)	81	A: 239.1.1.125:53551 B: 239.1.127.125:53551	581	A: 239.1.1.125:63551 B: 239.1.127.125:63551

### 2.4.8 HKEX OMD Retransmission Unicast Connectivity

HKEX provides a Retransmission Service to its OMD clients to recover multicast packet loss. Functional details of the Retransmission Service are provided in the Interface Specification. Find below the Unicast Address to connect to the OMD Retransmission Servers in OTP-C **OCG End-to-End Test Environment**.

	IP Unicast Address
Retransmission Server	10.1.90.105:55455

### 2.5 Individual Client Configuration Details

Individual clients will be provided with the following configuration details for each set of product feed subscription:

- One Retransmission User ID (Username)
- The subnet and subnet mask of the client segment
- Two unicast client allowable IP addresses for connection with re-transmission servers<sup>1</sup>
- Two physical IP addresses and two Virtual IP address of SDNet/2 routers<sup>2</sup>
- HSRP/VRRP groups used by SDNet/2 routers

Individual client testing configuration information will be provided separately prior to the Readiness Test or OCG End-to-End Test whilst the client specific production configuration information will be provided upon the client's successful completion of the Readiness Test and prior to the Market Rehearsals/Post Release Test. Please refer to Appendix B for an example of Client Configuration information.

---

<sup>1</sup> Only one unicast client allowable IP addresses for connection with re-transmission servers will be assigned for clients connecting to the OCG End-to-End Test environment

<sup>2</sup> Only one physical IP addresses and one Virtual IP address of SDNet/2 routers will be assigned for clients connecting to the OCG End-to-End Test environment

### 3. Guidelines on SDNet/2 lines / HSN connection

#### 3.1 Mode of OMD connection

- For resilience purpose, at least 2 SDNet/2 or HSN lines are required for OMD connection either for individual OMD datafeed product or sharing among different OMD datafeed products.
- The set of 2 SDNet/2 lines is required to locate in the same location. If clients require receiving OMD data in multiple locations, 1 set of 2 SDNet/2 lines are required to install in each location.

#### 3.2 Bandwidth Requirement

Full suite of OMD-C datafeed products and respective estimated bandwidth requirements are as follows.

##### 3.2.1 Production SDNet/2 / HSN and Testing SDNet/2 / HSN for Readiness Test

Datafeed plus add-ons	Alone	With Odd Lot Order (OLO)	With Conflated Broker Queue (CBQ)	With Index Feed (Index)*	With Stock Connect Market Feed (SCM)	SDNet/2 High Performance Option**
<b>Securities Standard (SS)</b>	10 Mbps	10 Mbps	N/A	10 Mbps	10 Mbps	Not necessarily required
<b>Securities Premium (SP)</b>	30 Mbps	30 Mbps	40 Mbps	40 Mbps	30 Mbps	Required
<b>Securities FullTick (SF)</b>	30 Mbps	30 Mbps	30 Mbps	30 Mbps	30 Mbps	Required

\* Update rates of individual indices depend on respective index providers.

\*\* High Performance Option of SDNet/2 line is required for streaming feeds.

##### 3.2.2 Testing SDNet/2 / HSN for OCG End-to-End Test

Datafeed plus add-ons	Alone	With Odd Lot Order (OLO)	With Conflated Broker Queue (CBQ)	With Index Feed (Index)	With Stock Connect Market Feed (SCM)	SDNet/2 High Performance Option**
<b>Securities Standard (SS)</b>	2 Mbps	2 Mbps	N/A	2 Mbps	2 Mbps	Not necessarily required
<b>Securities Premium (SP)</b>	2 Mbps	2 Mbps	2 Mbps	2 Mbps	2 Mbps	Not necessarily required
<b>Securities FullTick (SF)</b>	2 Mbps	2 Mbps	2 Mbps	2 Mbps	2 Mbps	Not necessarily required

\*\* High Performance Option of SDNet/2 line is NOT required for OCG End-to-End Test.

OCG EPs sourcing market data via direct connection to OMD-C have to successfully complete the OMD-C Readiness Test conducted in the OMD-C Readiness Test environment.

### 3.3 Sharing of SDNet/2 lines or HSN port set

Clients may opt to use separated sets or same set of SDNet/2 lines/ HSN ports for receiving data of different OMD datafeed products but clients should note the following policies on sharing of SDNet/2 for OMD datafeed products:

- Sharing of same set of production SDNet/2 circuits for **more than one OMD datafeed products across different markets** (i.e. securities market datafeed and derivatives market datafeed) **is allowed**.
- Sharing of the same SDNet/2 / HSN circuits for both product and testing purposes is **NOT ALLOWED**.
- **Exchange Participants** who would like to **share the same SDNet/2 circuits with trading traffic (orders and trades) and market data traffic** are however **only** allowed to do so if all the traffic **on** the circuits belongs to **the same market** (i.e. either securities market or derivatives market). OMD-Index, which is market neutral, can be carried on the same circuits with securities market or derivatives market. For example, Exchange Participants of cash market may use the same SDNet/2 circuits for their access to OMD-C SS, OMD-Index and OCG<sup>3</sup>.
- Clients should note and consider the followings if they are going to adopt shared line mode:
  - i) In case of failure/interruption of the shared circuits, all datafeed products using this set of circuits will be affected.
  - ii) Troubleshooting for network related issues (e.g. performance, latency or packet loss etc.) will be much more difficult and time consuming and assistance from network carriers and HKEX will be limited in such troubleshooting. Clients must accept this risk in making the line sharing decision.
  - iii) Due to the difference in operating hours and testing windows between securities and derivatives markets, clients should make sure any maintenance/testing of one of the systems does not affect the rest of the systems sharing the same set of circuits.

### 3.4 Bandwidth for shared SDNet/2 lines or HSN port set

- i) Shared SDNet/2 / HSN circuits must have sufficient bandwidth to support the data transmission of multiple products/devices. Please see below examples for reference:

Example 1: Sharing of a set of SDNet/2 lines for OMD SP and OMD SF:-  
The estimated bandwidth requirements for SP and SF are 30 Mbps each (with no optional feed), a set of SDNet/2 lines with 60Mbps will be required.
- ii) Clients can allocate bandwidth of the shared lines to different products as they wish as long as the bandwidth allocated to each datafeed product meets the estimated bandwidth requirement specified by HKEX.

---

<sup>3</sup> Should OCG Exchange Participants wish to share the same set of OMD-C SDNet lines with their OCG connection, they should refer to the Connectivity Guide of HKEX Orion Central Gateway Platform for the details of the relevant SDNet lines sharing arrangement.

### 3.5 SDNet/2 High Performance Option

High Performance Option of SDNet/2 lines which transmits data in relatively higher packet rates is highly recommended for clients who subscribe to OMD streaming feeds, i.e. SP and SF,. Please refer to Appendix A for details on high performance options provided by different SDNet/2 providers.



## 4. Other Guidelines on OMD Connections

---

### 4.1 Additional Login IDs/Client IP addresses for Unicast Retransmission Service

Direct connection clients will get one set of login ID with two IP addresses for retransmission service per OMD-C datafeed subscription. That means, clients subscribing to one set of SP feed and one set of SF feed will get two login IDs each with two IP addresses. These login IDs would be generic ID where each ID can be used to recover either the SP and SF missing data rather than tied to the respective datafeed product associated with that login ID provided that the same pair of SDNet/2 or HSN circuits is used for receiving the data from both SP and SF.

Exchange Participants who are entitled to receive two sets of complimentary SS feed via two different pairs of circuits when migrating to OCG would also be entitled to one complimentary login ID per set of SS feed which is also a generic ID.

To facilitate different clients' internal setup or operational requirement, an additional set of login ID and with/without IP addresses for retransmission service can be offered to clients at a cost on a per request basis.

---

### 4.2 Installation of SDNet/2 and HSN lines

---

#### 4.2.1 SDNet/2 lines

Clients are required to contact the SDNet/2 Accredited Vendors for installation of SDNet/2 lines for OMD connection. Details of the SDNet/2 Accredited Vendors and reference costs charged by different SDNet/2 Accredited Vendors can be found in Appendix A.

---

#### 4.2.2 HSN lines

Clients who will use HKEX's Hosting Service for OMD connection should contact our Hosting Service team directly for details on the HSN lines.

### Appendix A – SDNet/2 Accredited Vendors Information

SDNet/2 services are provided by Accredited Vendors for the provision of circuits from EP/CP/IV locations to HKEX's data centres.

To become an Accredited Vendor, the Vendor's SDNet/2 service must comply with the technical requirements set out by HKEX. The compliance of these technical requirements ensures the Accredited Vendor will deliver a stable, reliable and high quality networking services to the EPs/CPs/IVs.

Three Accredited Vendors have been selected and accredited to provide SDNet/2 network services. These vendors are (in alphabetical order):

- Hong Kong Telecommunications (HKT) Limited (also known as PCCW)
- Hutchison Global Communications Limited (HGC)
- Wharf T&T Limited (Wharf T&T)

For details of SDNet/2 circuit price information / technical specification / service level, please refer to [Price Information / Technical Specification / Service Level of SDNet/2](#) posted on HKEX website.

## Appendix B – Sample Client Configuration Information

### Client End Network Information (Sample):

1	Username	<i>CLIENT1</i>
2	OMD LAN Subnet	<i>10.55.64.0</i>
3	OMD LAN Subnet Mask	<i>255.255.255.224</i>
4	Vendor Allowable IP Address 1 for retransmission	<i>10.55.64.2</i>
5	Vendor Allowable IP Address 2 for retransmission	<i>10.55.64.29</i>
6	SDNet/2 Primary Circuit Number	<i>808311</i>
7	SDNet/2 Router A LAN IP Address (IP-A)	<i>10.55.64.14</i>
8	SDNet/2 Secondary Circuit Number	<i>808312</i>
9	SDNet/2 Router B LAN IP Address (IP-B)	<i>10.55.64.17</i>
10	SDNet/2 OMD LAN 1 <sup>st</sup> Virtual Gateway IP Address (Virt-A)	<i>10.55.64.1</i>
11	HSRP/VRRP Group Number used by SDNet/2 Router for Virt-A	<i>14</i>
12	SDNet/2 OMD LAN 2 <sup>nd</sup> Virtual Gateway IP Address (Virt-B)	<i>10.55.64.30</i>
13	HSRP/VRRP Group Number used by SDNet/2 Router for Virt-B	<i>17</i>
14	Multicast Protocol used by SDNet/2 Routers	<i>IGMPv2</i>
15	SDNet/2 Router Physical Interface for OMD	<i>gi1/0/1</i>
16	SDNet/2 Router Port Speed for OMD	<i>Auto Sense up to 1Gbps</i>
17	SDNet/2 Router Port Duplex Mode for OMD	<i>Auto Negotiation</i>
18	IP address ranges usable by Vendors (IP addresses outside these ranges are used and reserved by HKEX)	<i>10.55.64.9-13</i> <i>10.55.64.18-22</i>
	Note: Vendors can use same set of addresses for Unicast retransmission for the multicast transmission)	

### Host End Network Information (Sample):

1	Multicast Source Segment of Stream A in Primary Site forwarded by Vendor SDNet/2 Router A	<i>10.1.8.0/24</i>
2	Multicast Source Segment of Stream A in Backup Site forwarded by Vendor SDNet/2 Router A	<i>10.2.8.0/24</i>
3	Multicast Source Segment for multicast stream B in Primary Site forwarded by Vendor SDNet/2 Router B	<i>10.1.9.0/24</i>
4	Multicast Source Segment for multicast stream B in Backup Site forwarded by Vendor SDNet/2 Router B	<i>10.2.9.0/24</i>
5	Primary Site Primary Retransmission Server IP Address	<i>10.1.90.82/24</i>
6	Primary Site Primary Retransmission Server TCP Port Number	<i>55455</i>
7	Primary Site Secondary Retransmission Server IP Address	<i>10.1.90.83/24</i>
8	Primary Site Secondary Retransmission Server TCP Port Number	<i>55455</i>
9	Backup Site Primary Retransmission Server IP Address	<i>10.2.90.82/24</i>
10	Backup Site Primary Retransmission Server TCP Port Number	<i>55455</i>
11	Backup Site Secondary Retransmission Server IP Address	<i>10.2.90.83/24</i>
12	Backup Site Secondary Retransmission Server TCP Port Number	<i>55455</i>

# Securities Market & Index Datafeed Products (OMD-C)

