

## A) – Installation Guidelines (For Circuits provided by HKT)

### 1. Network Equipment

The following new network equipment will be provided and installed by HKT at Exchange Participant's (EP) / Information Vendor's (IV) / Clearing Participant's (CP) / Designated Bank's (DB) site:

- For dual circuits, there will be 1 fibre termination box<sup>#</sup> and 2 routers (depending on number of trading devices on the segment).
- For single circuit, there will be 1 fibre termination box<sup>#</sup> and 1 router.

*# Notes: HKT may make use of the existing fibre termination box if available.*

Below are the pictures of the router and Fibre termination box.

**Fibre  
Termination Box**



*Note: HKT may make use of the existing fibre termination box if available*

**Access Router  
(Single)**



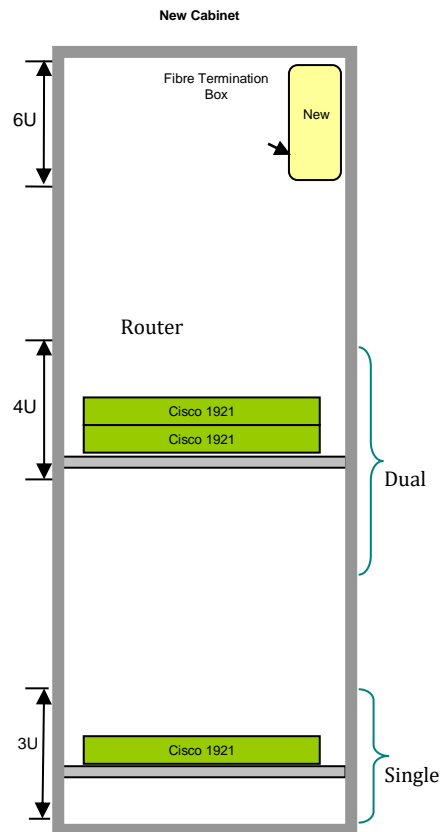
**Access Routers  
(Dual)**



*Note: The routers provided are desktop version  
(Rack-mounted type is not supported)*

## 2. Accommodation Requirements

EPs/IVs/CPs/DBs should provide sufficient accommodation to house the equipment as follows.



Remarks:

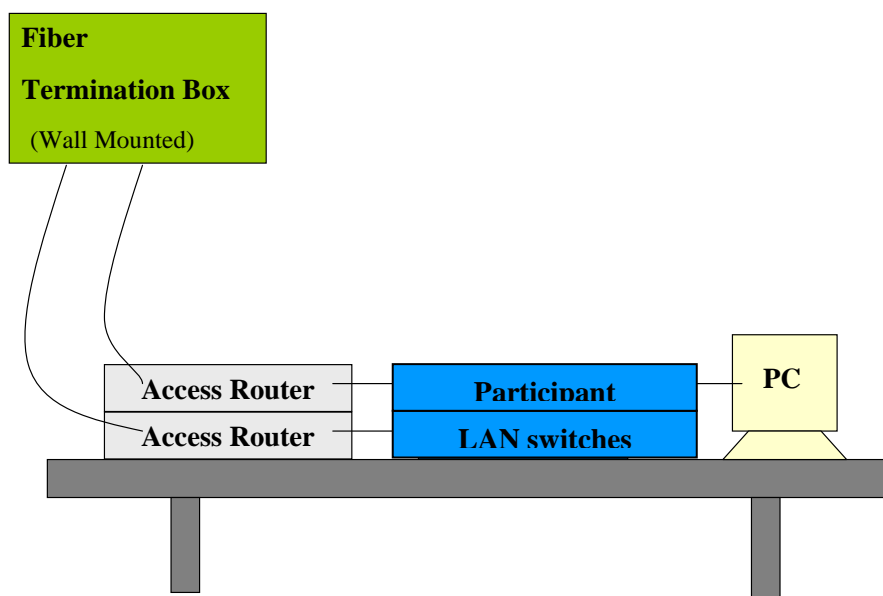
Cisco 1921 : New Router

**# Note:** *HKT will make use of the existing fibre termination box if spare fibre is available or otherwise install new fibre termination box.*

### 3. Space Requirements

Please refer to the following table for the space requirement of different network packages:

| Network Packages  | Access Router     | Fibre Termination Box | Total Rack Space | Trays |
|-------------------|-------------------|-----------------------|------------------|-------|
| 1. Single Circuit | 3U (5.5"/134mm)   | 6U (11.5"/ 267mm)     | 9U               | 1     |
| 2. Dual Circuits  | 4U (11.5"/ 267mm) | 6U (11.5"/ 267mm)     | 10U              | 1     |



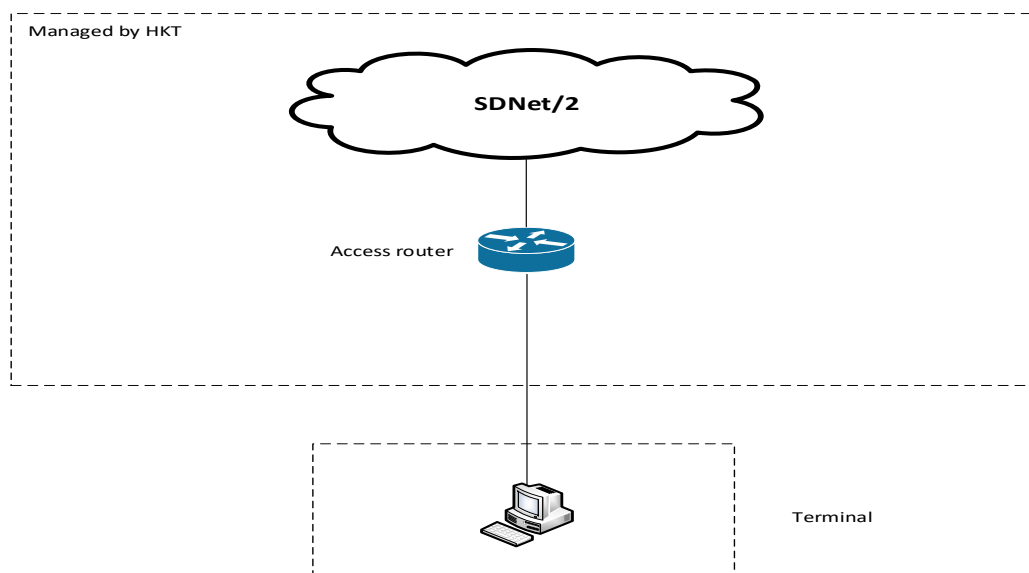
If Cabinet is not available, the space requirement for the network equipment is as follows:

| Equipment Type             | Width            | Depth            | Height          |
|----------------------------|------------------|------------------|-----------------|
| Fibre Termination Box      | 5.5"<br>(140mm)  | 3"<br>(77mm)     | 9.5"<br>(242mm) |
| Access Router (Cisco 1921) | 13.5"<br>(343mm) | 10.8"<br>(275mm) | 1.9"<br>(49mm)  |

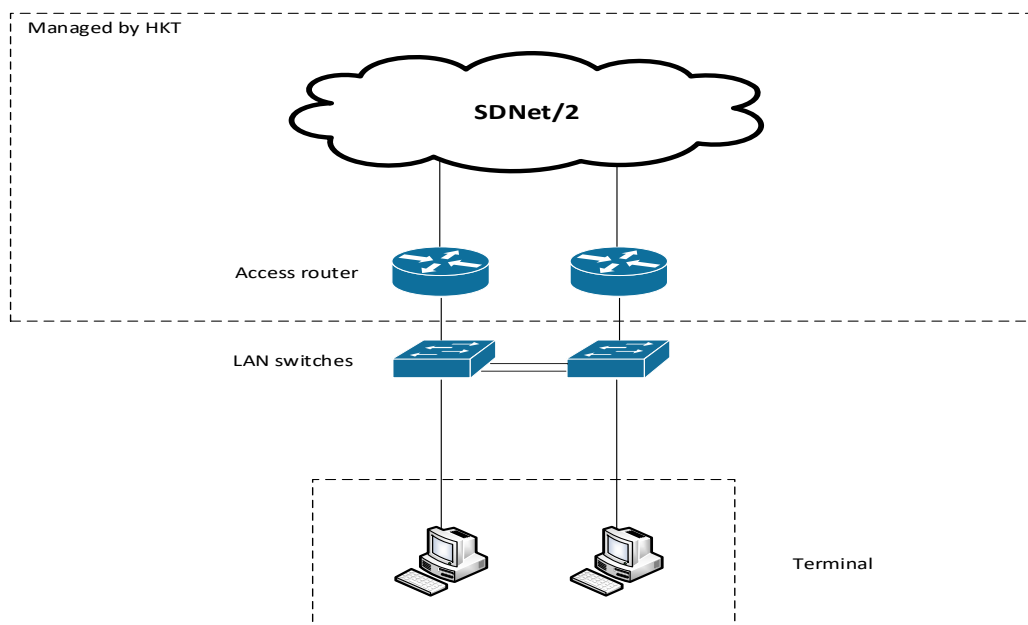
## 4. LAN Set-up Arrangement

The following diagrams show the typical LAN set-up for different network packages:

- **Typical LAN Set-up for Single Circuit**



- **Typical LAN Set-up for Dual Circuits**



## 5. AC Power Supplies

AC power supplies (220V) with standard 13A sockets should be provided by the EPs/IVs/CPs/DBs, before HKT pays visit for circuit installations. They should be adjacent to the new equipment to be installed, and distance from power sockets to the equipment should be less than 2 meters. Stable AC power supplies is required (UPS is recommended).

- For dual circuits: 2 power points are required

- For single circuit: 1 power point is required.

One additional temporary power point is also required for circuit commissioning test use.

## **6. Important Notes and Precaution for Circuit Installation**

- Secure accommodation should be provided to house the new equipment.
- Do not bend the fibre cables and patching cords (yellow in colour).
- Stable AC power supply is required (UPS is recommended).
- For Dual Circuits, separate (dual) AC power feeds and fuses are recommended.
- Environmental conditions: air-conditioned with ventilation is required
- For fibre pre-wiring works at EPs/IVs/CP/DB sites, HKT will make use of the cabling facilities provided by the EP/IV/CP/DB as far as possible. If it is not feasible, HKT will provide basic facilities for cable fixing such as flexible conduit or protection along the route. In case relocation of the provided facilities is required in future, HKT will consider charging the EP/IV/CP/DB the costs required for such alternation.
- LAN switches and their power points will be provided by EP/IV/CP/DB.

## B) – Installation Guidelines (For Circuits provided by HKBNES)

### 1. Network Equipment

The following new network equipment will be provided and installed by HKBNES for the SDNet/2 at Exchange Participant's (EP) / Information Vendor's (IV) / Clearing Participant's (CP) / Designated Bank's (DB) site:

- For dual circuits, there will be 1 fibre termination box, 2 routers.
- For single circuit, there will be 1 fibre termination box, 1 router.

**Access Router**



*Note: The routers provided are desktop version (rack-mounted type is not supported).*



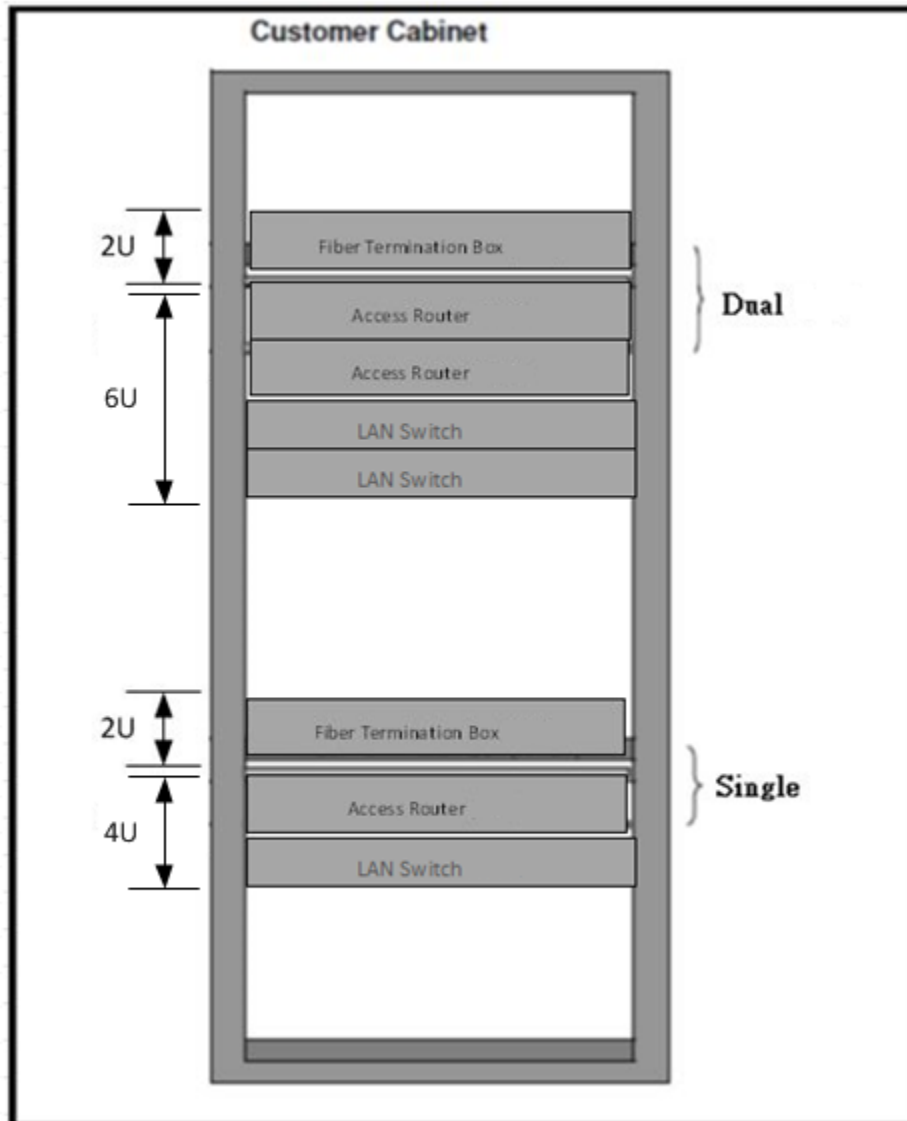
**Cabinet-mount fiber box**



**Wall-mount fiber box**

## 2. Accommodation Requirements

The EPs/IVs/CPs/DBs should provide sufficient accommodation to house the new equipment as follows.



Fibre Termination Panel  
**16.93" W x 13.78"D x 1.77"H**

(430mm W x 350mm D x 45mm H)

Access Router (per unit)  
**11.02"W x 7.04"D x 1.73"H**

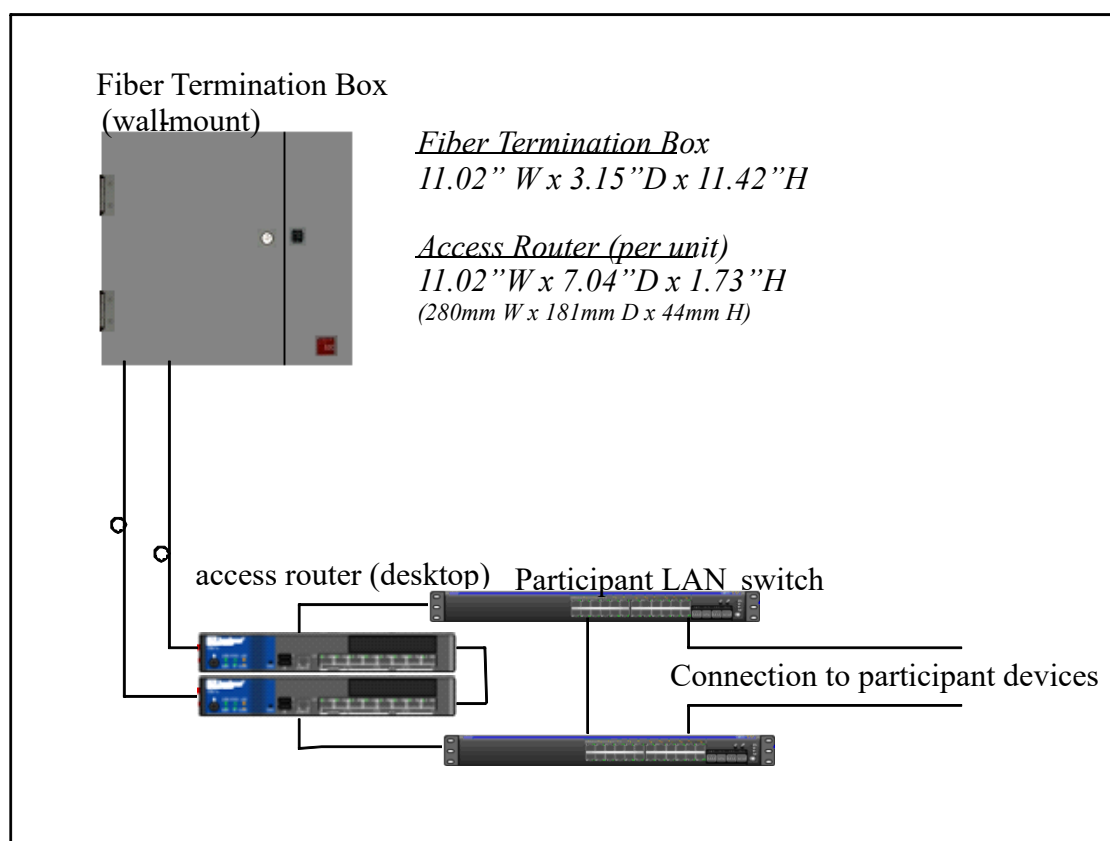
(280mm W x 181mm D x 44mm H)

### 3. Space Requirements

Please refer to the following table for the space requirement of different network packages:

| Network Packages  | Access Router and LAN Switch | Fibre Termination Box | Total Rack Space | Trays |
|-------------------|------------------------------|-----------------------|------------------|-------|
| 1. Single Circuit | 2U (7"/178mm)                | 2U (3.5"/ 89mm)       | 4U               | 2     |
| 2. Dual Circuits  | 3U (10.5"/ 267mm)            | 2U (3.5"/ 89mm)       | 5U               | 2     |

If cabinet is not available, the space requirement for the network equipment is as follows:

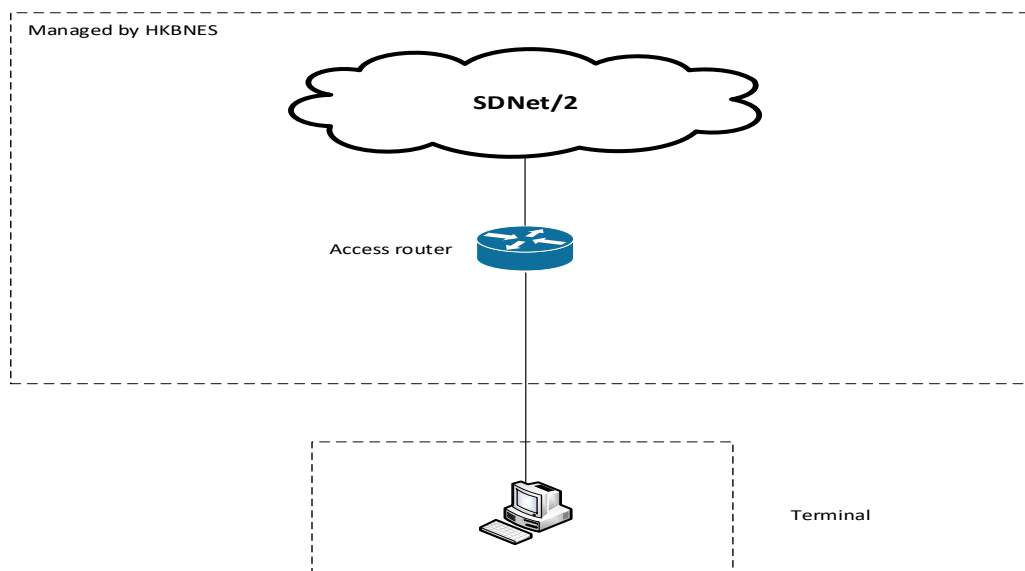




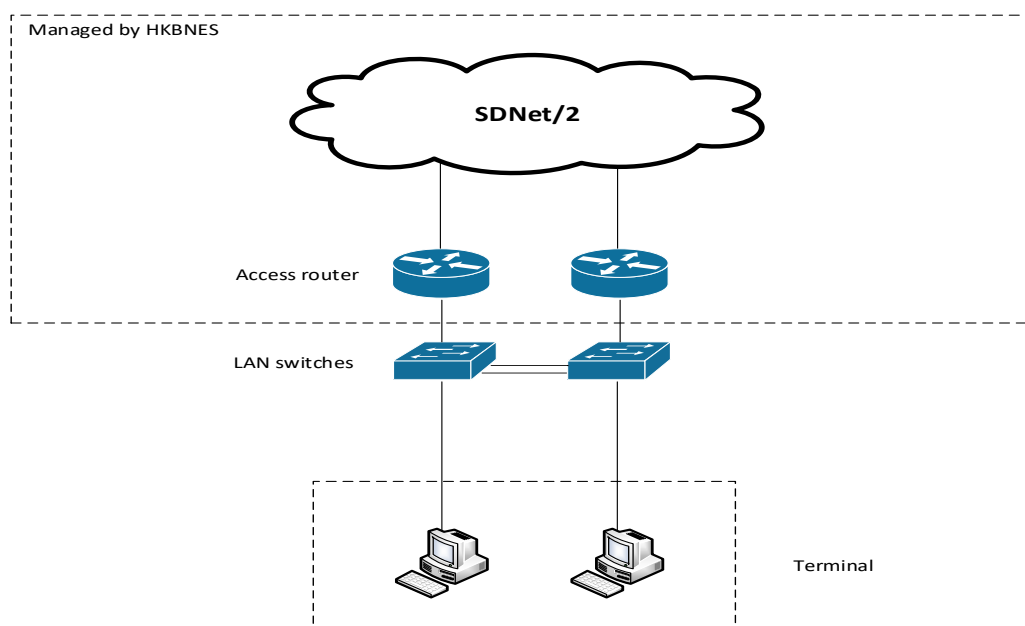
## 4. LAN Set-up Arrangement

The following diagrams show the typical LAN set-up for different network packages:

- **Typical LAN Set-up for Single Circuit**



- **Typical LAN Set-up for Dual Circuits**



## 5. AC Power Supplies

AC power supplies (220V) with standard 13A sockets should be provided by the EPs/IVs/CPs/DBs, before HKBNES pays visit for circuit installations. They should be adjacent to the new equipment to be installed, and distance from power sockets to the equipment should be less than 2 metres. Stable AC power supplies is required (UPS is recommended).

- For dual circuits: 2 power points are required.

- For single circuit: 1 power point are required.

## **6. Important Notes and Precaution for Circuit Installation**

- Secure accommodation should be provided to house the new equipment.
- Do not bend the fibre cables and patching cords (yellow in colour).
- Stable AC power supply is required (UPS is recommended).
- For Dual Circuits, separate (dual) AC power feeds and fuses are recommended.
- Environmental conditions: air-conditioned with ventilation is required
- For fibre pre-wiring works at EP/IV/CP/DB sites, HKBNES will make use of the cabling facilities provided by the EP/IV/CP/DB as far as possible. If it is not feasible, HKBNES will provide basic facilities for cable protection along the route. In case relocation of the provided facilities is required in future, HKBNES will consider charging the EP/IV/CP/DB the costs required for such alternation.
- LAN switches and their power points will be provided by EP/IV/CP/DB.