



Equity Derivatives Monthly Update

Markets Division

Information for institutional and corporate investors' reference only

[December 2020](#)

HKEX
香港交易所

Disclaimer

The information contained in this document is for general informational purposes only and does not constitute an offer, solicitation, invitation or recommendation to buy or sell any futures contracts or other products or to provide any investment advice or service of any kind. This document is not directed at, and is not intended for distribution to or use by, any person or entity in any jurisdiction or country where such distribution or use would be contrary to law or regulation or which would subject Hong Kong Exchanges and Clearing Limited (“**HKEX**”), Hong Kong Futures Exchange Limited (“**HKFE**”) (together, the “**Entities**”, each an “**Entity**”), or any of their affiliates, or any of the companies that they operate, to any registration requirement within such jurisdiction or country.

No section or clause in this document may be regarded as creating any obligation on the part of any of the Entities. Rights and obligations with regard to the trading, clearing and settlement of any futures contracts effected on HKFE shall depend solely on the applicable rules of HKFE and the relevant clearing house, as well as the applicable laws, rules and regulations of Hong Kong.

Although the information contained in this document is obtained or compiled from sources believed to be reliable, neither of the Entities guarantees the accuracy, validity, timeliness or completeness of the information or data for any particular purpose, and the Entities and the companies that they operate shall not accept any responsibility for, or be liable for, errors, omissions or other inaccuracies in the information or for the consequences thereof. The information set out in this document is provided on an “as is” and “as available” basis and may be amended or changed. It is not a substitute for professional advice which takes account of your specific circumstances and nothing in this document constitutes legal advice. Neither of the Entities shall be responsible or liable for any loss or damage, directly or indirectly, arising from the use of or reliance upon any information provided in this document.

Additional disclaimer for CES China 120 Index Futures

CES China 120 Index (“**CES 120 Index**”) are calculated and / or disseminated by China Securities Index Company Limited (“**CSIC**”) on behalf of China Exchanges Services Company Limited (“**CESC**”). Neither CESC nor CSIC guarantee (expressly or impliedly) the accuracy, completeness, timeliness or fitness for a particular purpose of the CESC Index and/or the information contained therein; nor do they accept any liability for any damages, loss, costs or expenses suffered by any person arising from the use of the CESC Index and/or the information contained therein.

HKEX Pulse



Futures and Options Information Application

Apple Store



Google Play



Xiaomi

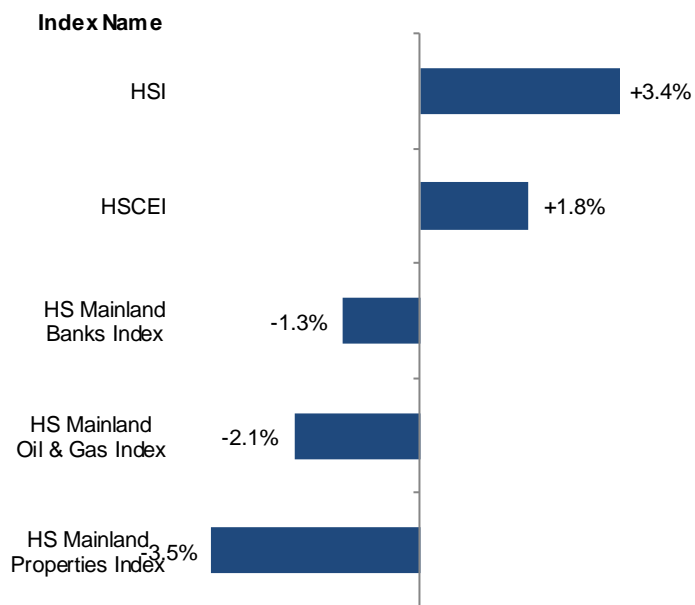


360

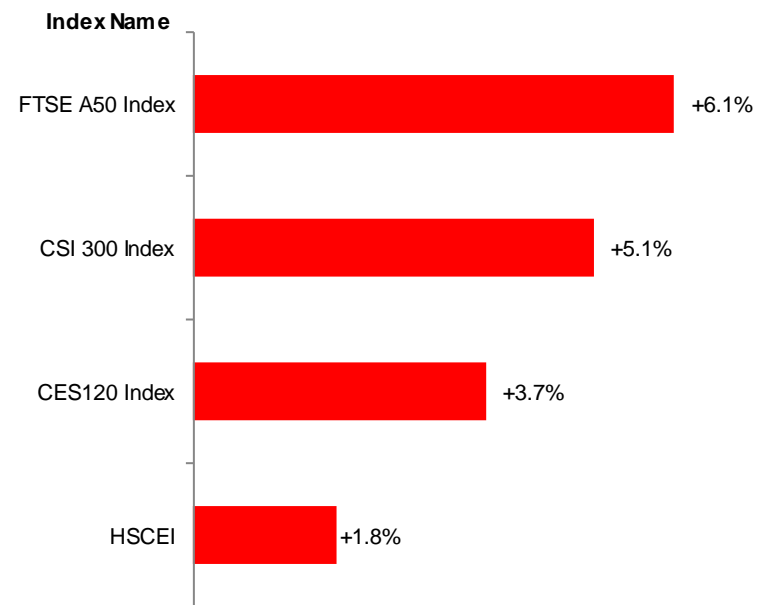


Equity Indices Monthly Performance in December 2020

Sector Indices vs HSI / HSCEI



CES120 vs China Theme Indices



Equity Index Futures Access Codes

| Vendor | HS Mainland Banks | HS Mainland Properties | HS Mainland Oil & Gas | CES 120 | HSI | HSCEI |
|-----------|-------------------|------------------------|-----------------------|---------|--------|---------|
| Bloomberg | BMWA | PPTA | OGIA | CESA | HIA | HCA |
| Refinitiv | 0#HMBI: | 0#HMPI: | 0#HMOI: | 0#HCHH: | 0#HSI: | 0#HCEI: |
| WIND | MBIF | MPIF | MOIF | CHHF | HSIF | HHIF |
| ET Net | MBI | MPI | MOI | CHH | HSI | HHI |

Data Source: Bloomberg
As at 31 December 2020
Information for reference only

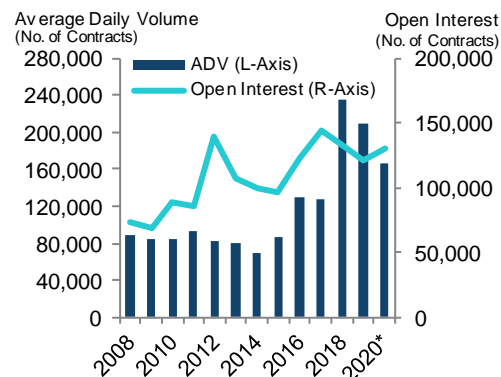


Equity Index Futures & Options

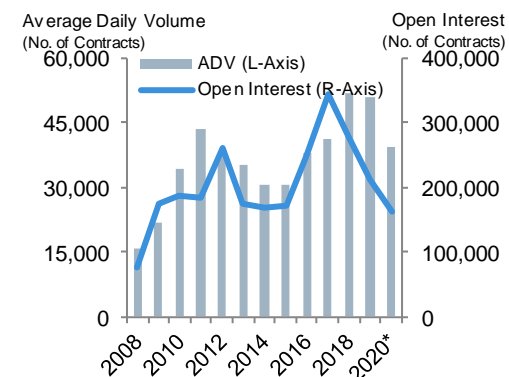
Hang Seng Index (HSI) Futures & Options

| HSI Products (2020 vs 2019) | ADV | OI* |
|---|----------------|----------------|
| HSI Futures | 167,209 (-20%) | 129,721 (+7%) |
| Mini-HSI Futures | 112,057 (+24%) | 17,370 (+63%) |
| HSI Options | 39,405 (-22%) | 162,843 (-22%) |
| Mini-HSI Options | 13,436 (-1%) | 8,638 (-52%) |
| HSI Volatility Index Futures | 1 (0%) | 0 (-100%) |
| HSI Dividend Point Index Futures | 101 (+80%) | 3,860 (+103%) |

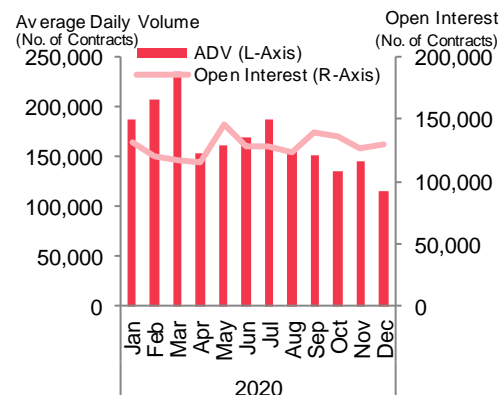
HSI Futures (YoY)



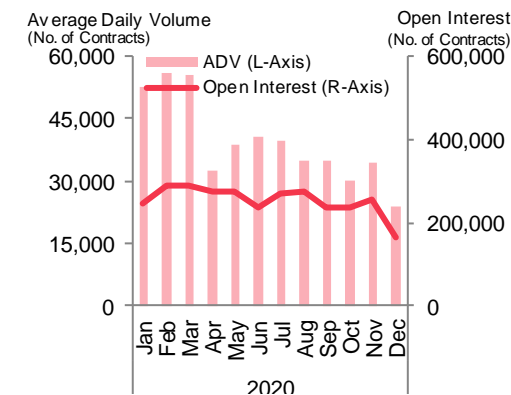
HSI Options (YoY)



HSI Futures (MoM)



HSI Options (MoM)



Data Source: HKEX

* OI compared to previous year-end

Information for reference only

As at 31 December 2020



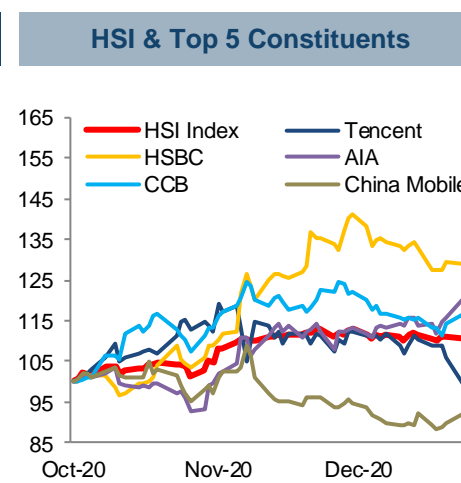
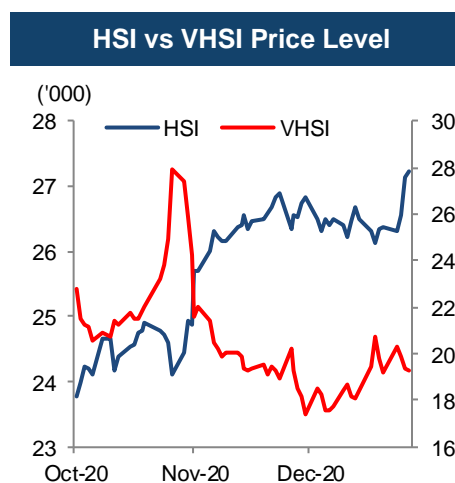
Equity Index Futures & Options

HSI Futures & Options

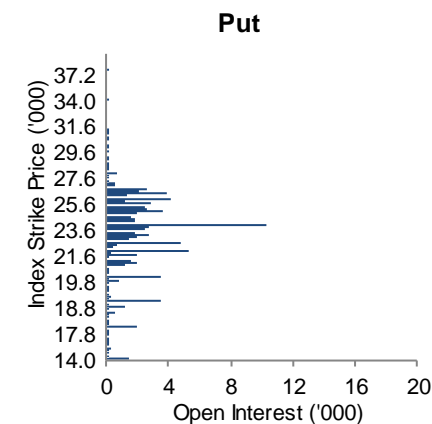
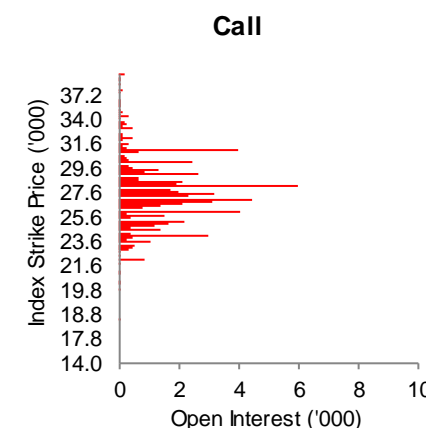
| Hang Seng Index | |
|--------------------------------------|---|
| Index Description | Includes the largest and most liquid stocks listed in Hong Kong |
| Index Level | 27,231.13 (As at 31 Dec 2020) |
| Index Volatility (30-Day Historical) | 21.8 |
| Index Avg. Day High-Low Range | 220.59 (Dec 2020) |
| HSCFI Correlation (2020) | 0.962 |

| Hang Seng Index Futures | |
|-----------------------------|--------------------------------|
| Contract Multiplier | HK\$50 |
| Notional Value (1 Contract) | HK\$1.36Mn (As at 31 Dec 2020) |

| Transaction Cost* | |
|--------------------------|---------------------|
| Stamp Duty | N/A |
| Trading Fee | HK\$10 / contract |
| SFC Levy | HK\$0.54 / contract |
| Commission Rate | Negotiable |
| Margin as of 01 Dec 2020 | HK\$86,150 |



Distribution of HSI Index Options OI in Month-end



Data Source: HKEX, Bloomberg
 * All calculations are in HKD and exclude commission fees
 Information for reference only
 As at 31 December 2020

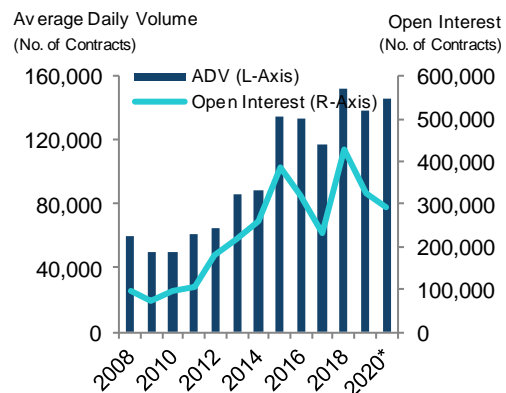


Equity Index Futures & Options

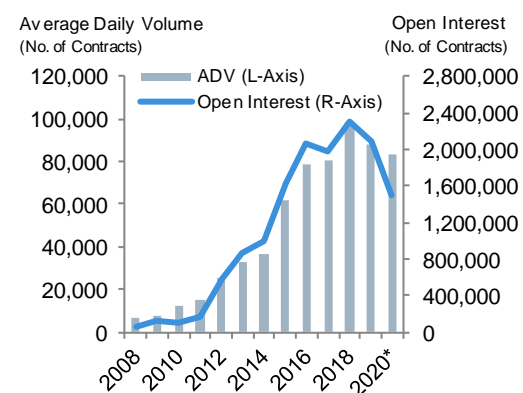
Hang Seng China Enterprises Index (HSCEI) Futures & Options

| HSCEI Products (2020 vs 2019) | ADV | OI* |
|------------------------------------|---------------|------------------|
| HSCEI Futures | 145,608 (+5%) | 290,518 (-11%) |
| Mini HSCEI Futures | 18,227 (+22%) | 4,197 (0%) |
| HSCEI Options | 83,236 (-5%) | 1,502,474 (-28%) |
| Mini HSCEI Options | 2,266 (-4%) | 3,490 (-73%) |
| HSCEI Dividend Point Index Futures | 1,802 (-17%) | 52,667 (-55%) |

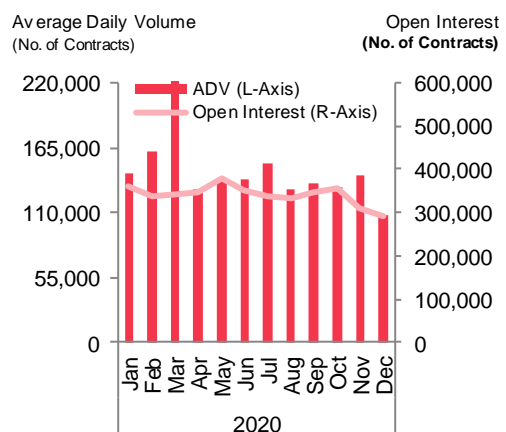
HSCEI Futures (YoY)



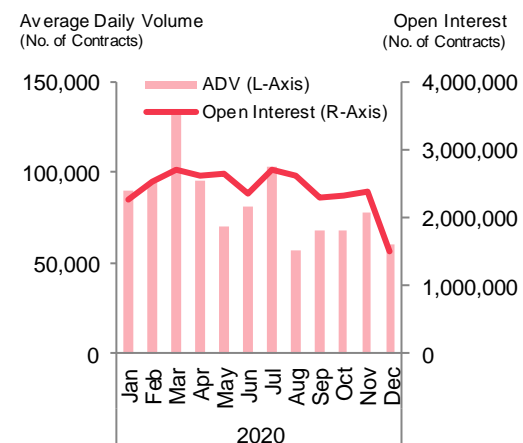
HSCEI Options (YoY)



HSCEI Futures (MoM)



HSCEI Options (MoM)



Data Source: HKEX

* OI compared to previous year-end

Information for reference only

As at 31 December 2020



Equity Index Futures & Options

HSCEI Futures & Options

| HSCEI | |
|--|--|
| Index Description | Comprises the largest and most liquid H shares |
| Index Level | 10,738.40 (As at 31 Dec 2020) |
| Index Volatility (30-Day Historical) | 22.1 |
| Index Avg. Day High-Low Range | 93.44 (Dec 2020) |
| Correlation with HSI, CES120 (2020) | 0.962,0.891 |
| Correlation with CSI300, FTSE A50 (2019) | 0.762,0.799 |

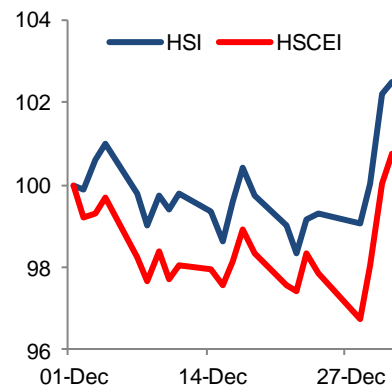
| HSCEI Futures | |
|-----------------------------|--------------------------------|
| Contract Multiplier | HK\$50 |
| Notional Value (1 Contract) | HK\$0.54Mn (As at 31 Dec 2020) |

| Transaction Cost* | |
|--------------------------|---------------------|
| Stamp Duty | N/A |
| Trading Fee | HK\$3.5 / contract |
| SFC Levy | HK\$0.54 / contract |
| Commission Rate | Negotiable |
| Margin as of 01 Dec 2020 | HK\$34,650 |

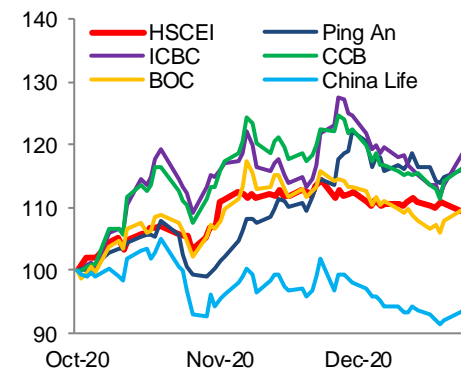
Data Source: HKEX, Bloomberg
 * All calculations are in HKD and exclude commission fees
 Information for reference only
 As at 31 December 2020



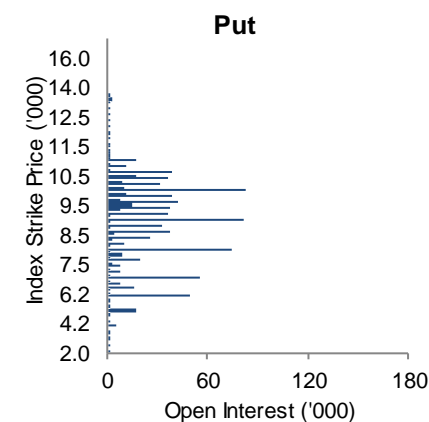
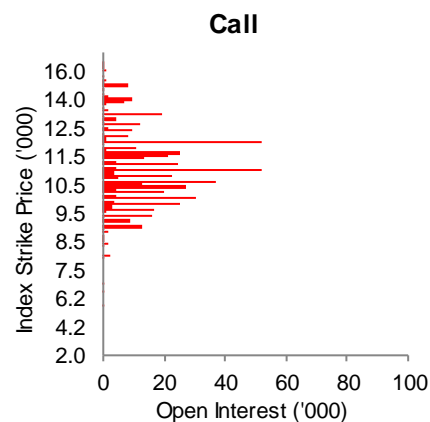
HSI vs HSCEI



HSCEI & Top 5 Constituents



Distribution of HSCEI Index Options OI in Month-end



Weekly HSI & HSCEI Options Performance

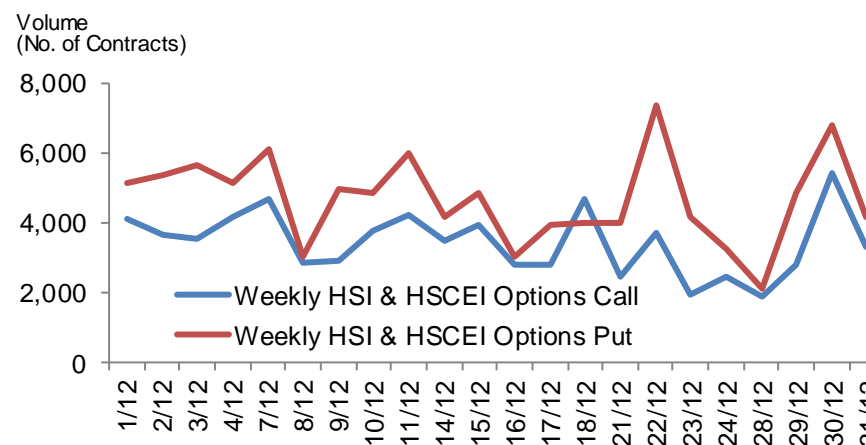
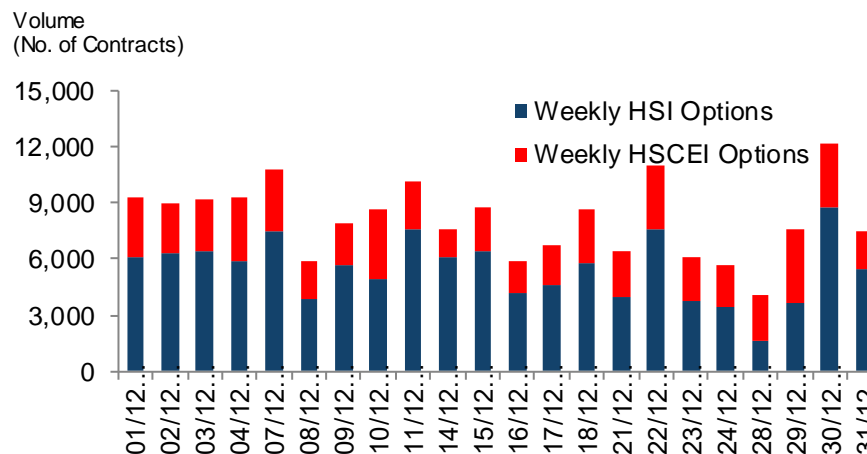
| Weekly HSI Options | |
|---------------------|---|
| Contract Multiplier | HK\$50 |
| Liquidity Providers | Akuna, Eclipse, I-Access, IMC, Maven, Optiver |

| Transaction Cost* | |
|-------------------|---------------------|
| Stamp Duty | N/A |
| Trading Fee | HK\$10 / contract |
| SFC Levy | HK\$0.54 / contract |
| Commission Rate | Negotiable |

| Weekly HSCEI Options | |
|----------------------|---|
| Contract Multiplier | HK\$50 |
| Liquidity Providers | Akuna, Eclipse, I-Access, IMC, Maven, Optiver |

| Transaction Cost* | |
|-------------------|---------------------|
| Stamp Duty | N/A |
| Trading Fee | HK\$3.5 / contract |
| SFC Levy | HK\$0.54 / contract |
| Commission Rate | Negotiable |

Weekly HSI & HSCEI Options Volume



An investment tool to manage short term event risk

Data Source: HKEX

* All calculations are in HKD and exclude commission fees

Information for reference only

As at 31 December 2020

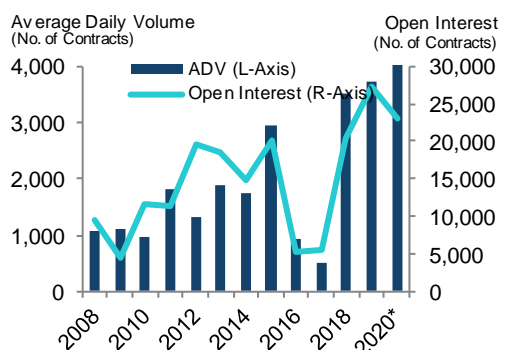


Equity Futures & Options

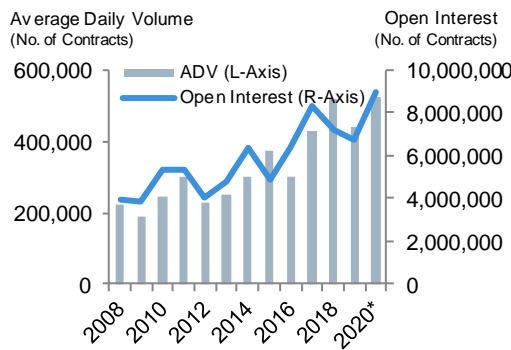
Single Stock Futures & Options

| Single Stock Derivatives ADV (2020 vs 2019) | ADV | OI* | No. of Single Stock Derivatives | |
|---|----------------|------------------|---------------------------------|-----|
| Stock Futures | 4,585 (+23%) | 22,965 (-16%) | Single Stock Futures | 81 |
| Stock Options | 526,191 (+19%) | 8,942,852 (+33%) | Single Stock Options | 101 |

Stock Futures (YoY)



Stock Options (YoY)

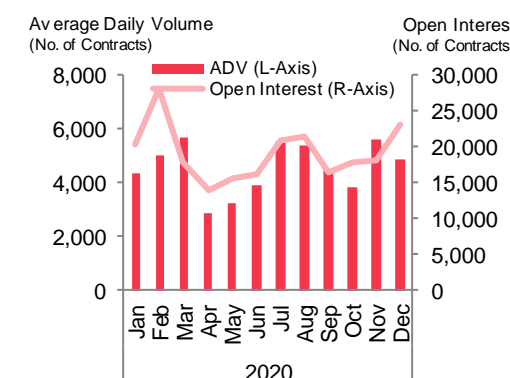


Latest and Future Developments

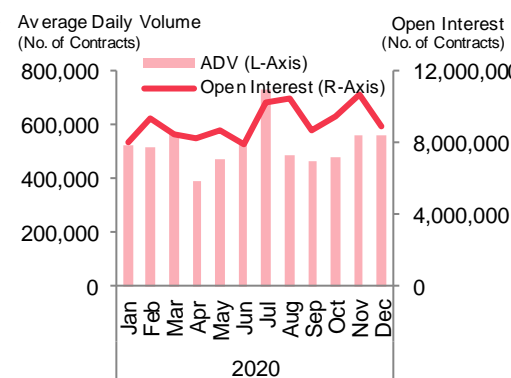
Stock Futures

- Products
 - 3 A-shares ETFs futures contracts
 - Total 81 stock futures contracts

Stock Futures (MoM)



Stock Options (MoM)



Stock Options

- Products
 - 3 A-shares ETFs options contracts
 - Total 101 stock options contracts
- Market Makers (MMs)
 - 3 types of market makers (PMM/ CQMM/ QRMM)
 - CQMM to provide 50 series continuous quotations

Data Source: HKEX
 * OI compared to previous year-end
 Information for reference only
 As at 31 December 2020



MSCI Asia and Emerging Market Index Futures Performance

MSCI Asia and Emerging Market Index

| | |
|--------------------------|--|
| Index Description | representation 38 DM and EM countries and regional indices |
|--------------------------|--|

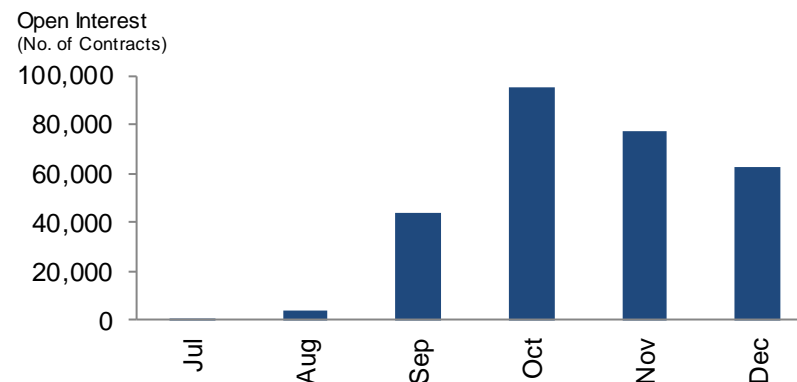
MSCI Asia and Emerging Market Index Futures

| | |
|------------------------------------|--|
| Contract Multiplier | Average US\$40 |
| Notional Value (1 Contract) | Average US\$49K (As at 31 December 2020) |
| No. of Liquidity Providers | 14 |

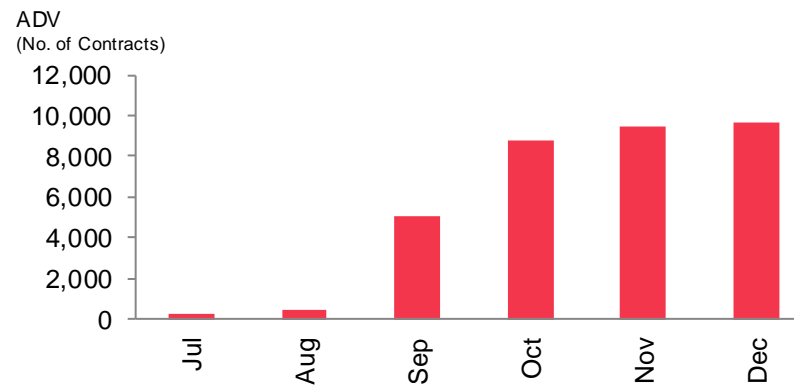
Transaction Cost*

| | |
|--------------------|----------------------------|
| Stamp Duty | N/A |
| Trading Fee | US\$0.6-US\$1.0 / contract |
| SFC Levy | US\$0.07 / contract |

Open Interest (31 December 2020)



Average Daily Volume (31 December 2020)



Futures contracts have relatively lower transaction costs

Volume and Open Interest continue to growth

Data Source: HKEX

* Exclude commission fees

Information for reference only

As at 31 December 2020



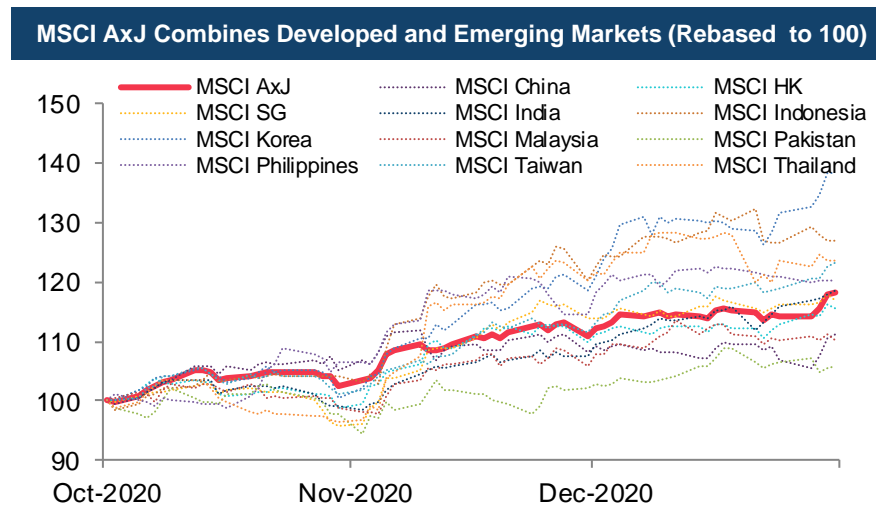
MSCI AC Asia ex Japan NTR Index (AxJ) Futures Performance

| MSCI AxJ | |
|--------------------------------------|--|
| Index Description | representation 2 DM countries (excl. Japan) and 9 EM countries in Asia |
| Index Level | 636.87 (As at 31 December 2020) |
| Index Volatility (30-Day Historical) | 20.5 |
| Index Avg. Day High-Low Range | 4.64 (December 2020) |
| HSI Correlation (2020) | 0.918 |
| HSCEI Correlation (2020) | 0.919 |

| MSCI AxJ Futures | |
|-----------------------------|----------------------------------|
| Contract Multiplier | US\$100 |
| Notional Value (1 Contract) | US\$64K (As at 31 December 2020) |
| Avg. Quote Size | US\$0.32Mh (5 Contracts) |
| Avg. Bid-Ask Trading Spread | 1.0 index points (December 2020) |
| Liquidity Providers | Flow and 11 banks |

| Transaction Cost* | |
|--------------------------|---------------------|
| Stamp Duty | N/A |
| Trading Fee | US\$0.5 / contract |
| SFC Levy | US\$0.07 / contract |
| Margin as of 01 Dec 2020 | US\$2,310 |

Futures contracts have relatively lower transaction costs



MSCI AxJ is a well-established benchmark representing Asia regional (excluding Japan) equity market performance

Data Source: HKEX

* All calculations are in USD and exclude commission fees

Information for reference only

As at 31 December 2020



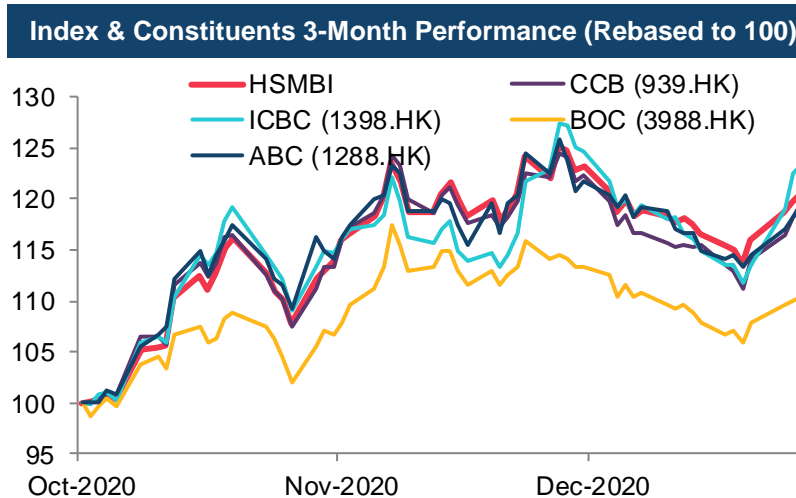
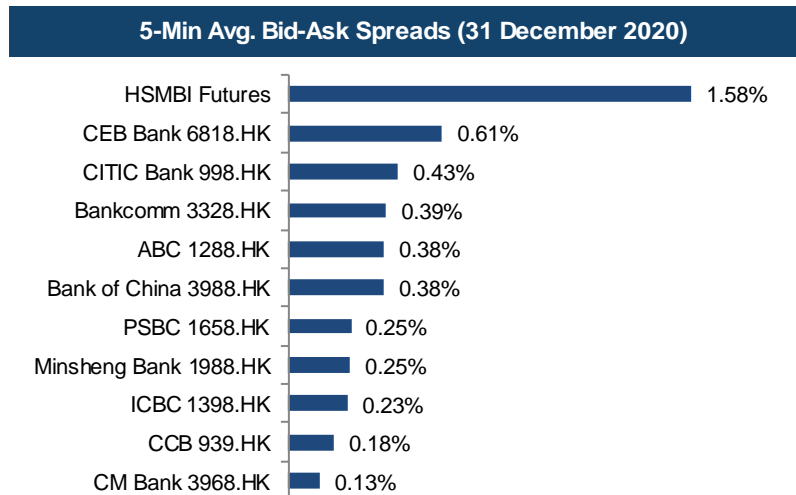
Hang Seng Mainland Banks Index Futures Performance

| Hang Seng Mainland Banks Index (HSMBI) | |
|--|--|
| Index Description | 10 largest and most representative HKEX-listed mainland banks stocks |
| Index Level | 2,693.23 (As at 31 December 2020) |
| Index Volatility (30-Day Historical) | 23.0 |
| Index Avg. Day High-Low Range | 29.92 (December 2020) |
| HSI Correlation (2020) | 0.773 |
| HSCEI Correlation (2020) | 0.819 |

| Hang Seng Mainland Banks Index Futures | |
|--|-------------------------------------|
| Contract Multiplier | HK\$50 |
| Notional Value (1 Contract) | HK\$0.13Mn (As at 31 December 2020) |
| Avg. Quote Size | HK\$0.67Mn (5 Contracts) |
| Avg. Bid-Ask Trading Spread | 64.2 index points (December 2020) |
| Liquidity Providers | N/A |

| Transaction Cost* | |
|--------------------------|---------------------|
| Stamp Duty | N/A |
| Trading Fee | HK\$2 / contract |
| SFC Levy | HK\$0.54 / contract |
| Margin as of 01 Dec 2020 | HK\$7,440 |

Futures contracts have relatively lower transaction costs



HSMBI Futures can be used for hedging

Data Source: HKEX, HSIL, Bloomberg

* All calculations are in HKD and exclude commission fees

Information for reference only
As at 31 December 2020



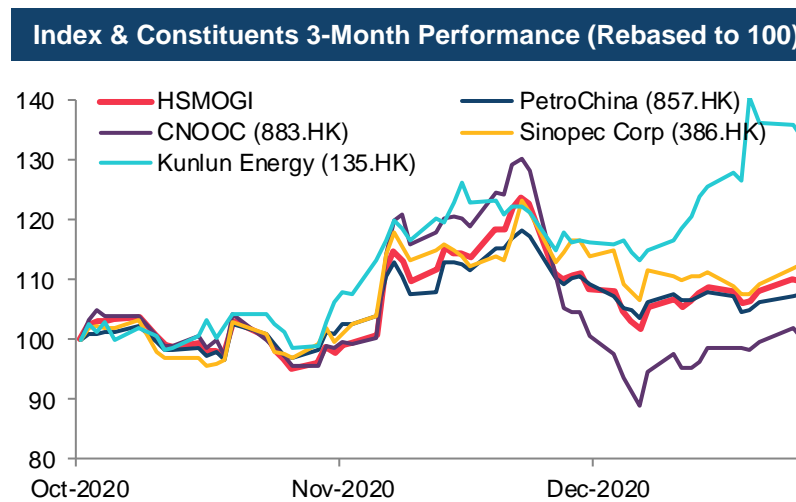
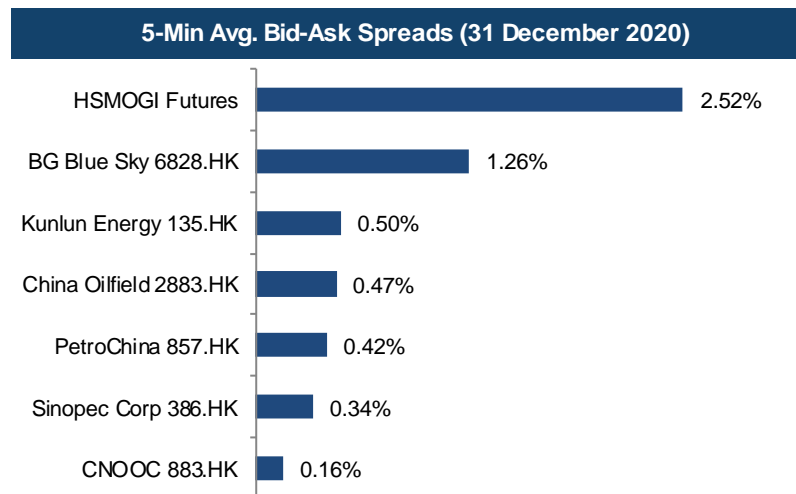
Hang Seng Mainland Oil & Gas Index Futures Performance

| Hang Seng Mainland Oil & Gas Index (HSMOGI) | |
|---|---|
| Index Description | 7 largest and most representative HKEX-listed mainland oil & gas stocks |
| Index Level | 1,006.43 (As at 31 December 2020) |
| Index Volatility (30-Day Historical) | 36.7 |
| Index Avg. Day High-Low Range | 14.31 (December 2020) |
| HSI Correlation (2020) | 0.713 |
| HSCFI Correlation (2020) | 0.697 |

| Hang Seng Mainland Oil & Gas Index Futures | |
|--|-----------------------------------|
| Contract Multiplier | HK\$50 |
| Notional Value (1 Contract) | HK\$50K (As at 31 December 2020) |
| Avg. Quote Size | HK\$0.25Mn (5 Contracts) |
| Avg. Bid-Ask Trading Spread | 51.7 index points (December 2020) |
| Liquidity Providers | N/A |

| Transaction Cost* | |
|--------------------------|---------------------|
| Stamp Duty | N/A |
| Trading Fee | HK\$2 / contract |
| SFC Levy | HK\$0.54 / contract |
| Margin as of 01 Dec 2020 | HK\$4,310 |

Futures contracts have relatively lower transaction costs



HSMOGI Futures can be used for hedging

Data Source: HKEX, HSIL, Bloomberg

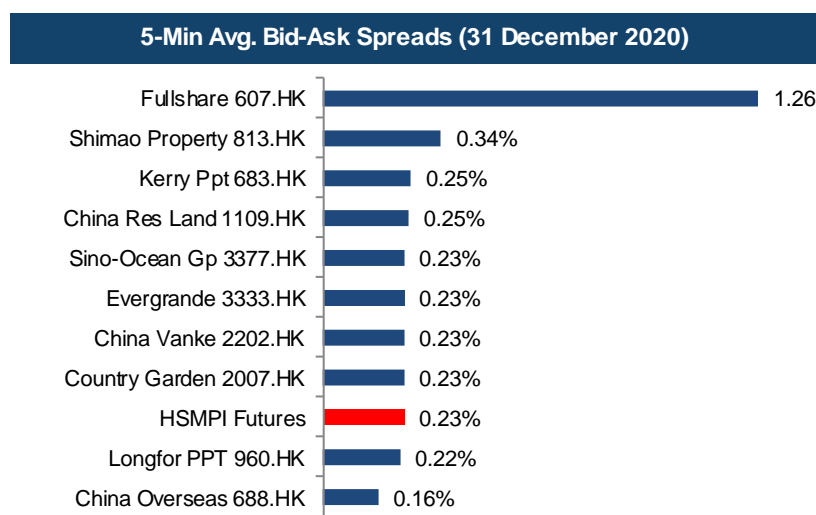
* All calculations are in HKD and exclude commission fees

Information for reference only
As at 31 December 2020

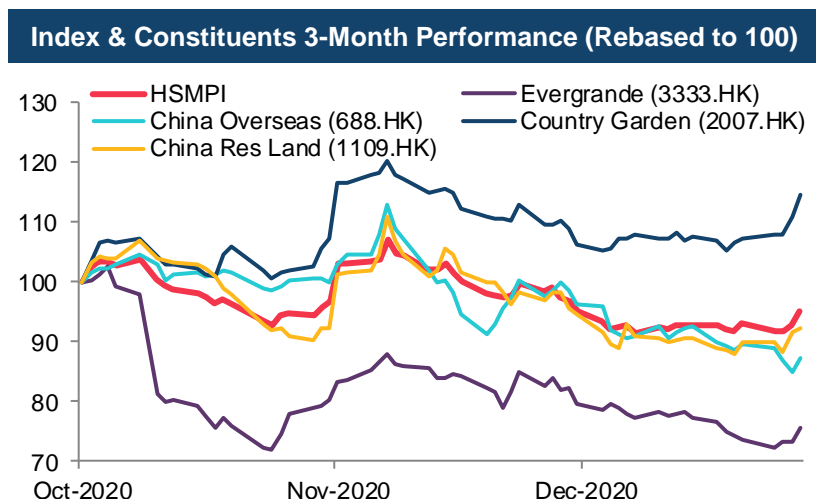


Hang Seng Mainland Properties Index Futures Performance

| Hang Seng Mainland Properties Index (HSMPI) | |
|---|---|
| Index Description | 10 largest and most representative HKEX-listed mainland properties stocks |
| Index Level | 6,035.89 (As at 31 December 2020) |
| Index Volatility (30-Day Historical) | 31.7 |
| Index Avg. Day High-Low Range | 57.26 (December 2020) |
| HSI Correlation (2020) | 0.81 |
| HSCFI Correlation (2020) | 0.836 |



| Hang Seng Mainland Properties Index Futures | |
|---|-------------------------------------|
| Contract Multiplier | HK\$50 |
| Notional Value (1 Contract) | HK\$0.30Mn (As at 31 December 2020) |
| Avg. Quote Size | HK\$1.5Mn (5 Contracts) |
| Avg. Bid-Ask Trading Spread | 123.1 index points (December 2020) |
| Liquidity Providers | N/A |



| Transaction Cost* | |
|--------------------------|---------------------|
| Stamp Duty | N/A |
| Trading Fee | HK\$2 / contract |
| SFC Levy | HK\$0.54 / contract |
| Margin as of 01 Dec 2020 | HK\$19,800 |

Futures contracts have relatively lower transaction costs

HSMPI Futures can be used for hedging

Data Source: HKEX, HSIL, Bloomberg

* All calculations are in HKD and exclude commission fees

Information for reference only

As at 31 December 2020



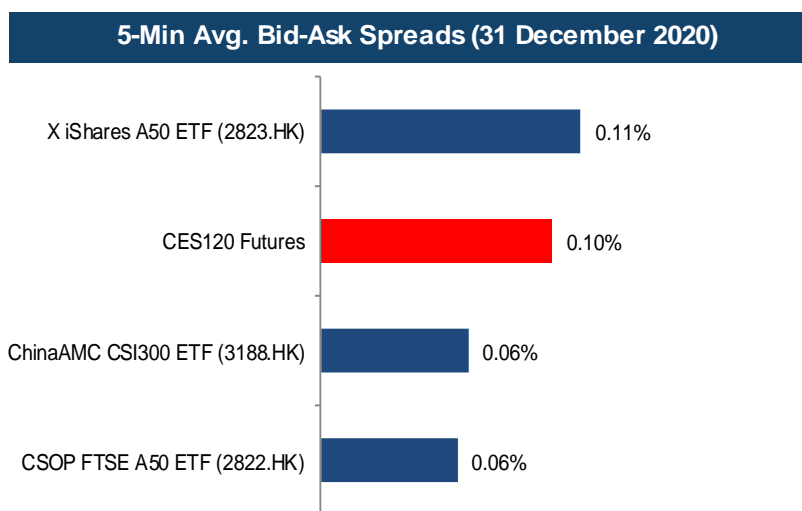
CES120 Index Futures Performance

| CES120 Index | |
|--------------------------------------|--|
| Index Description | 80 A-Shares and 40 HK-listed Mainland China H-shares, P-chips, and red chips |
| Index Level | 8,458.78 (As at 31 December 2020) |
| Index Volatility (30-Day Historical) | 18.7 |
| Index Avg. Day High-Low Range | 77.22 (December 2020) |
| CSI300 Correlation (2020) | 0.914 |
| FTSE A50 Correlation (2020) | 0.926 |

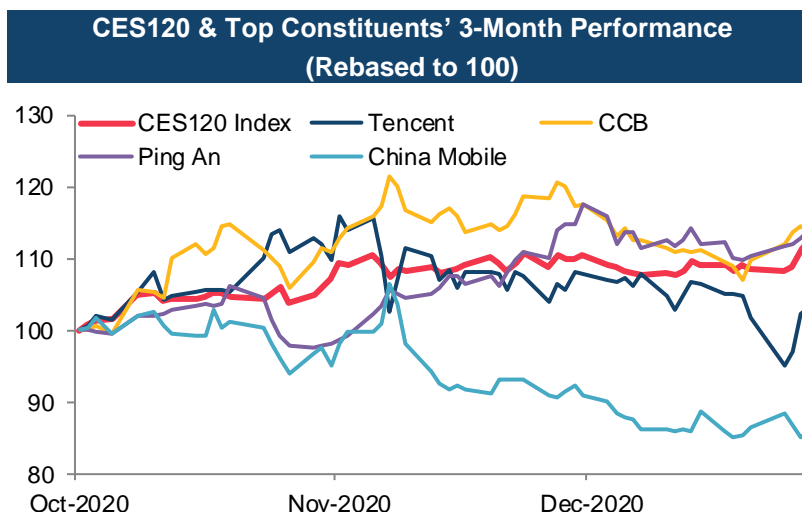
| CES120 Index Futures | |
|--------------------------------|-------------------------------------|
| Contract Multiplier | HK\$50 |
| Notional Value (1 Contract) | HK\$0.42Mn (As at 31 December 2020) |
| Average Quote Size | HK\$2.11Mn (5 Contracts) |
| Average Bid-Ask Trading Spread | 8.3 index points (December 2020) |
| Liquidity Providers | Flow |

| Transaction Cost* | |
|--------------------------|---------------------|
| Stamp Duty | N/A |
| Trading Fee | HK\$5 / contract |
| SFC Levy | HK\$0.54 / contract |
| Margin as of 01 Dec 2020 | HK\$20,640 |

Futures contracts have relatively lower transaction costs



CES120 Futures have relatively tighter Bid-Ask Spreads



CES120 Futures can be used to hedge A-share positions

Data Source: HKEX, HSIL, Bloomberg

* All calculations are in HKD and exclude commission fees

Information for reference only
As at 31 December 2020



MSCI Asia and Emerging Market Index Futures Access Codes

| Information Vendor | MSCI Australia NTR (USD) Index Futures | MSCI China Free (USD) Index Futures | MSCI China Free NTR (USD) Index Futures | MSCI EM Asia ex China NTR (USD) Index Futures | MSCI EM Asia ex Korea NTR (USD) Index Futures | MSCI EM Asia NTR (USD) Index Futures | MSCI EM EMEA NTR (USD) Index Futures | MSCI EM ex China NTR (USD) Index Futures | MSCI EM ex Korea NTR (USD) Index Futures | MSCI EM LatAm NTR (USD) Index Futures |
|--------------------|--|-------------------------------------|---|---|---|--------------------------------------|--------------------------------------|--|--|---------------------------------------|
| Bloomberg | HKCA Index | HMSA Index | HJEA Index | HQOA Index | HQRA Index | HRSA Index | HQTA Index | HQDA Index | HQIA Index | HQYA Index |
| Refinitiv | 0#HMAN: | 0#HMCU: | 0#HMCN: | 0#HMAC: | 0#HMAK: | 0#HEAN: | 0#HMEE: | 0#HMXC: | 0#HMXK: | 0#HMEL: |
| WIND | MANF.HK | | MCNF.HK | | | EANF.HK | | | | |

| Information Vendor | MSCI Emerging Markets (USD) Index Futures | MSCI Emerging Markets NTR (USD) Index Futures | MSCI Hong Kong NTR (USD) Index Futures | MSCI India (USD) Index Futures | MSCI India NTR (USD) Index Futures | MSCI Indonesia Index (USD) Futures | MSCI Indonesia NTR (USD) Index Futures | MSCI Japan (JPY) Index Futures | MSCI Japan NTR (JPY) Index Futures | MSCI Japan NTR (USD) Index Futures |
|--------------------|---|---|--|--------------------------------|------------------------------------|------------------------------------|--|--------------------------------|------------------------------------|------------------------------------|
| Bloomberg | HMPA Index | HMOA Index | HLCA Index | HRTA Index | HJDA Index | HMLA Index | HKBA Index | HQAA Index | HQBA Index | HJCA Index |
| Refinitiv | 0#HMEM: | 0#HEMN: | 0#HMHN: | 0#HMDA: | 0#HMIN: | 0#HMID: | 0#HMDN: | 0#HMJP: | 0#HMJJ: | 0#HMJU: |
| WIND | | | | | MINF.HK | | MDNF.HK | | | MJUF.HK |

| Information Vendor | MSCI Malaysia (USD) Index Futures | MSCI Malaysia NTR (USD) Index Futures | MSCI New Zealand NTR (USD) Index Futures | MSCI Pacific ex Japan NTR (USD) Index Futures | MSCI Pacific NTR (USD) Index Futures | MSCI Philippines (USD) Index Futures | MSCI Philippines NTR (USD) Index Futures | MSCI Singapore Free (SGD) Index Futures | MSCI Singapore Free NTR (USD) Index Futures | MSCI Singapore NTR (USD) Index Futures |
|--------------------|-----------------------------------|---------------------------------------|--|---|--------------------------------------|--------------------------------------|--|---|---|--|
| Bloomberg | HMYA Index | HKEA Index | HOPA Index | HRPA Index | HRBA Index | HNSA Index | HLEA Index | HKOA Index | HOBA Index | HKPA Index |
| Refinitiv | 0#HMMY: | 0#HMMN: | 0#HMNZ: | 0#HMPJ: | 0#HMPC: | 0#HMPH: | 0#HMPN: | 0#HMSG: | 0#HMGN: | 0#HMSN: |
| WIND | | MMNF.HK | | | | | | | | |

| Information Vendor | MSCI Taiwan (USD) Index Futures | MSCI Taiwan 25/50 (USD) Index Futures | MSCI Taiwan 25/50 NTR (USD) Index Futures | MSCI Taiwan NTR (USD) Index Futures | MSCI Thailand (USD) Index Futures | MSCI Thailand NTR (USD) Index Futures | MSCI Vietnam (USD) Index Futures | MSCI Vietnam NTR (USD) Index Futures |
|--------------------|---------------------------------|---------------------------------------|---|-------------------------------------|-----------------------------------|---------------------------------------|----------------------------------|--------------------------------------|
| Bloomberg | HJAA Index | HRCA Index | HRDA Index | HJBA Index | HMTA Index | HKDA Index | HNTA Index | HKSA Index |
| Refinitiv | 0#HMTW: | 0#HTWP: | 0#HTWN: | 0#HMWN: | 0#HMTH: | 0#HMTN: | 0#HMVT: | 0#HMVN: |
| WIND | MTWF.HK | | | MWNF.HK | | MTNF.HK | | |

Data Source: HKEX



Weekly HSI and HSCEI Options Access Codes

| Hong Kong and International Information Vendors | | |
|---|--|--------------------------|
| Information Vendor | Weekly HSI Options | Weekly HSCEI Options |
| AASTOCKS | 322105 | 322125 |
| Bloomberg | HSI Index OMON | HSCEI Index OMON |
| DB Power | HSI | HHI |
| ET Net Limited | Menu "Futures/Options" > "Futures/Options Quotation (Short-term)" > Access code: The series name | |
| Infocast | HSI | HHI |
| MegaHub Limited | HSI | HHI |
| N2N-AFE | 873101 | 873121 |
| Refinitiv | <0#HSIW*.HF> | <0#HCEIW*.HF> |
| Tele-Trend | File->Open->Options->HSI | File->Open->Options->HHI |

MSCI AxJ and MSCI AxJ Futures Access Codes

| Hong Kong and International Information Vendors | | |
|---|----------------|------------------------|
| Information Vendor | MSCI AxJ Index | MSCI AxJ Index Futures |
| AASTOCKS | - | 221495 |
| Activ Financial | - | MXJ/<yy><m>.HF |
| Bloomberg | M1ASJ Index | MJSA Index CT |
| CQG | - | MXJ |
| DB Power | - | MXJ |
| East Money Information | - | MXJ |
| Factset | - | MXJE |
| ICE Data Services | - | F:MXJ |
| Infocast | - | MXJ |
| N2N-AFE | - | 870823 |
| QPWeb | - | P11203 |
| SIX Financial Information | - | MXJmy |
| Refinitiv | .MIAX00000NUS | 0#HMXJ: |
| Telequote Data | - | MXJ/<yy><m>.HF |
| Tele-Trend | - | MXJFC, MXJmy |

Data Source: HKEX



Sector Index and Sector Index Futures Access Codes

| Hong Kong and International Information Vendors | | | | | | |
|---|----------------------|------------------------------|---------------------------|-----------------------------------|--------------------------|----------------------------------|
| Information Vendor | Mainland Banks Index | Mainland Banks Index Futures | Mainland Properties Index | Mainland Properties Index Futures | Mainland Oil & Gas Index | Mainland Oil & Gas Index Futures |
| AASTOCKS | | 221420 | | 221425 | | 221415 |
| Activ Financial | =0200700.HK | MBI/16K.HF | =0200800.HK | MPI/16K.HF | =0201000.HK | MOI/16K.HF |
| AFE | 837451 | 870809 | 837451 | 870810 | 837451 | 870808 |
| Bloomberg | HSMBI Index | BMW A Index | MSMPI Index | PPTA Index | HSMOGI Index | OGIA Index |
| DB Power | | MBI | | MPI | | MOI |
| ET Net | MBN | MBI | MPR | MPI | MOG | MOI |
| Infocast | HSMBI | MBI | MSMPI | MPI | MOGI | MOI |
| QuotePower | SEHK.HHSMBI | P11223 | SEHK.HHSMPI | P11224 | SEHK.HHSMOGI | P11222 |
| Telequote | | MBImy | | MPImy | | MOImy |
| Refinitiv | .HSMBI | 0#HMBI: | .HSMPI | 0#HMPI: | .HSMOGI | 0#HMOI: |
| Mainland Information Vendors | | | | | | |
| Information Vendor | Mainland Banks Index | Mainland Banks Index Futures | Mainland Properties Index | Mainland Properties Index Futures | Mainland Oil & Gas Index | Mainland Oil & Gas Index Futures |
| East Money | HSMBI | MBI | HSMPI | MPI | HSMOGI | MOI |
| Hexin Flush Financial | | MBIC | | MPIC | | MOIC |
| Pobo Financial | | MBI+Month+Year | | MPI+Month+Year | | MOI+Month+Year |
| Qianlong | 999905 | 209 | 999902 | 209 | 999903 | 209 |
| Wind | HSMBI | MBIF+yyymm+HK | HSMPI | MPIF+yyymm+HK | HSMOGI | MOIF+yyymm+HK |

Data Source: HKEX



CES120 Index and CES120 Index Futures Access Codes

| Hong Kong and International Information Vendors | | |
|---|---------------|-----------------------|
| Information Vendor | CES 120 Index | CES 120 Index Futures |
| Bloomberg Finance L.P. | CES120 | CESA Index DES <GO> |
| Refinitiv | .HKCES120 | 0#HCHH: |
| AAStocks.com Limited | 110056 | 221360 |
| AFE Solutions Ltd. | 837505 | 870800 |
| DB Power Online Limited | CES120 | CHH |
| ET Net Limited | CEC | CHH |
| Infocast Limited | CE120 | CHH |
| Interactive Data Group | I:CES120 | Fn:CHH\MYDD |
| Marketprizm Hong Kong Limited | CES120 | CHHmy |
| SIX Financial Information Ltd. | CES120 | CHHmy |
| Telequote Data International Limited | CES120 | CHHmy |

| Mainland Information Vendors | | |
|---|---------------|--------------------------|
| Information Vendor | CES 120 Index | CES 120 Index Futures |
| Hithink RoyalFlush Information Network Ltd | CES120 | CHHC |
| Shanghai DZH Limited | CES120 | CHH+Month Code+Year Code |
| Shanghai Gildata Services Co Ltd | CES120 | - |
| Shanghai Wind Information Co., Ltd | CES120 | CHHF+yyymm+.HK |
| Zheng Zhou Esunny Information Technology Co, Ltd. | - | CHH |
| Shanghai Wenhua Financial Information Ltd | - | CHHmy |
| Shanghai Qianlong Advanced Technology Co Ltd | CES120 | Page 209 |

Data Source: HKEX

