

Welcome to the bi-weekly newsletter for the Shanghai-Hong Kong Stock Connect programme. Here you can find regular updates on trading statistics of the programme, trading calendars and economic data calendars.

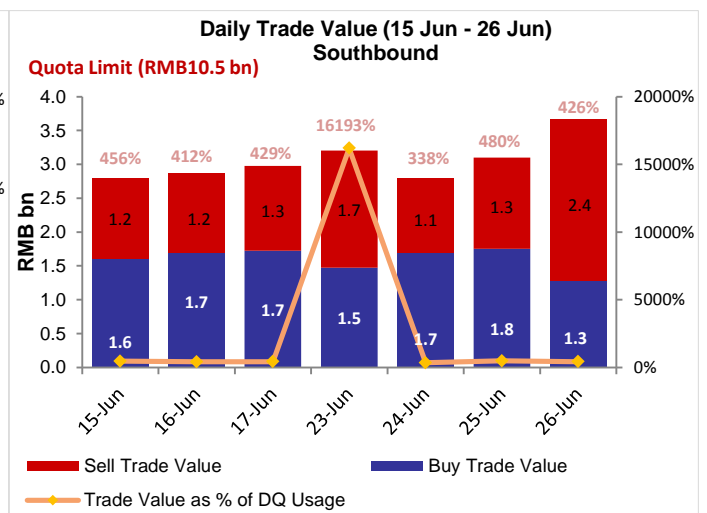
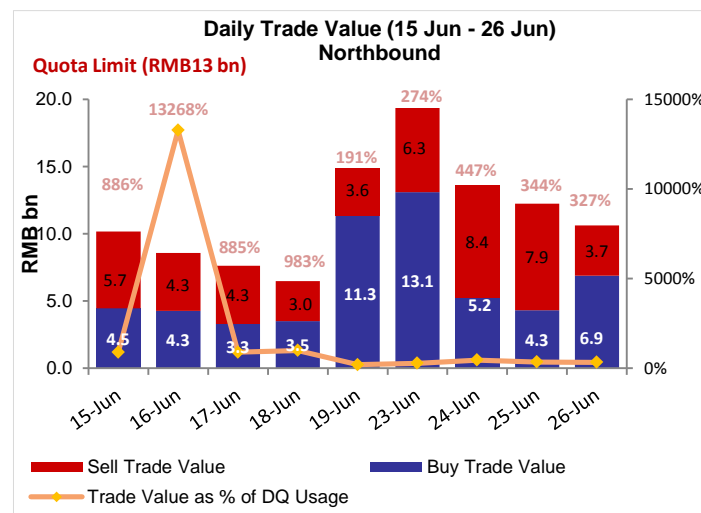
INSIDE THIS ISSUE:

- Market Overview
- Northbound & Southbound Daily Trade Value
- Northbound & Southbound Aggregate Quota Usage
- Northbound Trade Value Breakdown
- Northbound & Southbound Top 10 Stocks by Trade Value
- Top 10 A+H Shares by A+H Market Capitalisation
- Top 10 Holdings by % of Issued Shares
- Top 10 SH-HK Stock Connect Holdings by Market Value
- Total Market Average Daily Turnover & Velocity
- July & August 2015 Trading Calendar
- July 2015 Significant Economic News/Data
- Appendix - List of China Connect / Trade-through Exchange Participants

Market Overview:

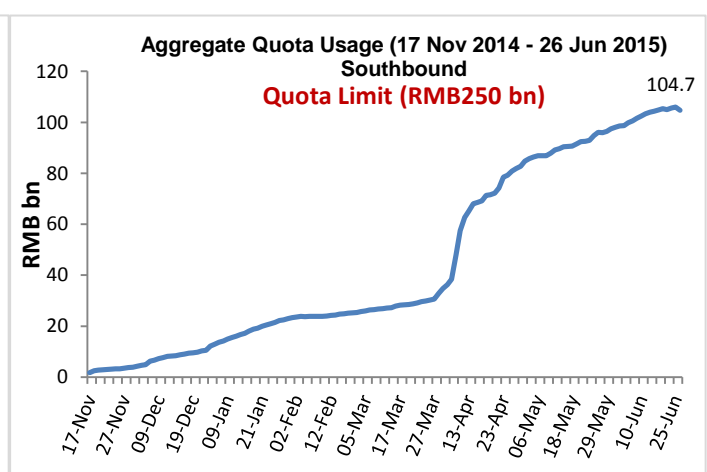
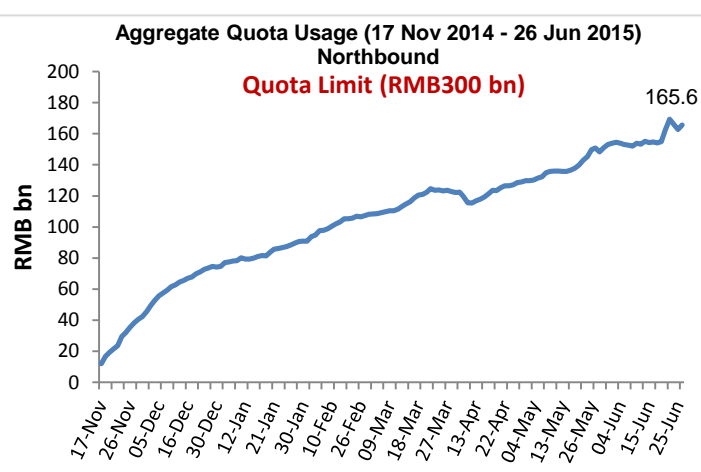
- From 15 Jun to 26 Jun, the Northbound Average Daily Buy and Sell Trade Value was RMB11,499 million while Southbound was HK\$3,814 million
- As of 26 Jun 2015, the Northbound Aggregate Quota Usage was RMB165.6 billion while Southbound was RMB104.7 billion

Northbound & Southbound Daily Trade Value



Source: HKE, as of 26 Jun 2015

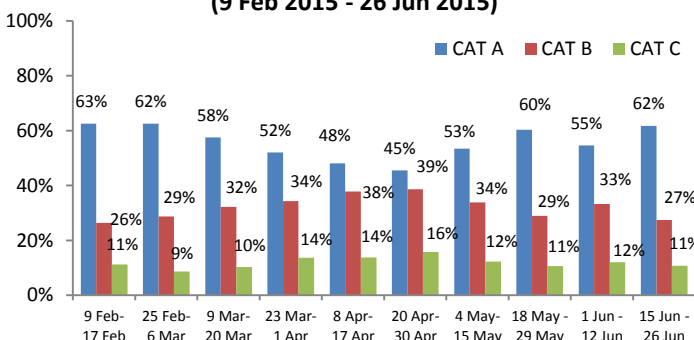
Northbound & Southbound Aggregate Quota Usage



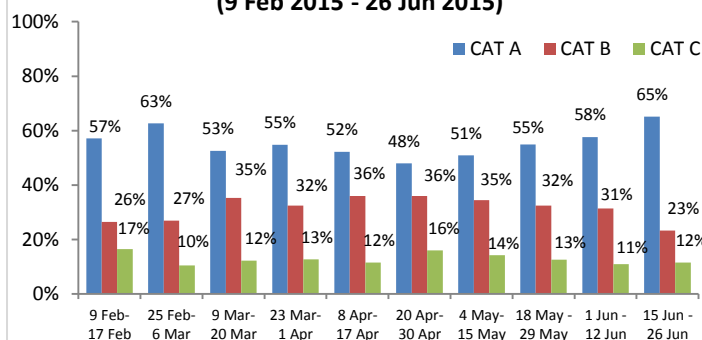
Source: HKE, as of 26 Jun 2015

Northbound Trade Value Breakdown

Buy Trade Value Breakdown by EPs' Market Share (9 Feb 2015 - 26 Jun 2015)



Sell Trade Value Breakdown by EPs' Market Share (9 Feb 2015 - 26 Jun 2015)



Note: CAT A EPs (Position 1 to 14), CAT B EPs (Position 15 to 65) and CAT C EPs (Position >65). For details, please click [here](#)

Source: HKEx as of 26 Jun 2015, Trade Value for 15 Jun - 26 Jun

Northbound & Southbound Top 10 Stocks by Trade Value

Top 10 A shares by Total Buy & Sell Trade Value in Northbound

Stock Name / Stock Code	Average Trade Size (US\$)	Buy Trade Value (US\$ m)	Sell Trade Value (US\$ m)	Total Trade Value (US\$ m)	% of Total Trade Value	Market Cap (US\$ bn)	*P/E Ratio	Dividend Yield (%)
1. Ping An Insurance (SH. 601318)	21,000	953	432	1,385	8.31	68	13x	0.90
2. China Merchants Bank (SH. 600036)	9,312	310	277	587	3.52	58	8x	3.56
3. Kweichow Moutai (SH. 600519)	13,131	241	168	409	2.46	45	17x	1.64
4. CRRC Corporation (SH. 601766)	5,482	190	206	397	2.38	67	47x	0.49
5. CITIC Securities (SH. 600030)	10,261	218	149	367	2.20	41	21x	0.58
6. Industrial Bank (SH. 601166)	11,248	234	120	354	2.13	50	6x	3.49
7. ICBC (SH. 601398)	7,705	250	93	343	2.06	216	6x	5.26
8. Shanghai Intl' Airport (SH. 600009)	5,203	99	213	313	1.88	9	25x	1.04
9. Anhui Conch Cement (SH. 600585)	9,307	149	140	289	1.73	13	10x	3.21
10. China Minsheng Bank (SH. 600016)	8,160	171	106	277	1.66	40	7x	1.74

Top 10 HK Stocks by Total Buy & Sell Trade Value in Southbound

Stock Name / Stock Code	Average Trade Size (US\$)	Buy Trade Value (US\$ m)	Sell Trade Value (US\$ m)	Total Trade Value (US\$ m)	% of Total Trade Value	Market Cap (US\$ bn)	*P/E Ratio	Dividend Yield (%)
1. CRRC Corporation (HK. 1766)	10,759	90	139	230	6.67	7	24x	N/A
2. SIMC (HK. 981)	12,202	47	62	109	3.17	5	25x	N/A
3. CGN Power (HK. 1816)	9,700	39	68	106	3.09	6	19x	0.08
4. GOME (HK. 493)	9,254	42	53	95	2.77	4	19x	2.15
5. Evergrande Real Estate (HK. 3333)	8,611	43	38	81	2.36	9	4x	11.87
6. China Huishan Dairy (HK. 6863)	9,322	42	34	76	2.22	3	23x	1.09
7. Alibaba Pictures (HK. 1060)	11,992	36	29	65	1.89	10	N/A	N/A
8. Kingsoft Corporation (HK. 3888)	17,609	27	27	54	1.56	5	33x	0.48
9. Fosun International (HK. 656)	13,531	39	14	53	1.55	19	15x	0.87
10. Shanghai Electric Group (HK. 2727)	9,534	27	25	52	1.52	2	27x	1.13

Source: SSE & HKEx as of 26 Jun 2015, Trade Value for 15 Jun - 26 Jun. *Historical P/E Ratio

Top 10 A+H Shares by A+H Market Capitalisation

Top 10 A+H Shares by A+H Market Capitalisation

Stock Name (A+H Share)	A + H Market Cap (US\$ bn)	Northbound Trade Value		Southbound Trade Value		A Share Market Cap (US\$ bn)	SSE Market Cap Rank	H to A Premium / Discount
		Buy (US\$ m)	Sell (US\$ m)	Buy (US\$ m)	Sell (US\$ m)			
1. PetroChina	298	96.38	48.28	10.32	10.76	275	1	-33.43%
2. ICBC	290	250.31	92.95	10.83	2.30	216	2	6.17%
3. China Construction Bank	230	50.89	33.71	2.79	6.70	10	106	-12.35%
4. Bank of China	208	144.31	127.14	29.19	11.54	154	4	-11.05%
5. Agricultural Bank of China	184	94.84	64.10	5.82	10.60	167	3	-6.05%
6. China Life Insurance	128	69.98	42.19	18.09	2.21	96	6	-7.53%
7. China Petroleum & Chemical Crop.	125	118.21	85.81	7.82	13.59	103	5	-20.01%
8. Ping An Insurance	119	953.28	431.58	17.79	2.91	68	7	10.27%
9. Bank of Communications	82	134.04	89.48	9.01	10.06	47	15	-14.26%
10. CRRC Corporation	74	190.36	206.48	90.37	139.31	67	8	-49.11%

Source: SSE & HKEx as of 26 Jun 2015, Trade Value for 15 Jun – 26 Jun

Top 10 Holdings by % of Issued Shares

Top 10 SSE Holdings Through Northbound

	Stock Code	Company Name	% of **Issued and/or Tradeable Shares	% of Total Buy & Sell Trade Value	Market Cap (US\$bn)	*PE Ratio	Dividend Yield (%)	H to A Premium / Discount
1	603288	Foshan Haitian Flavouring and Food	21.66	0.16	12.8	38x	1.61	N/A
2	600009	Shanghai International Airport	20.30	1.88	8.9	25x	1.04	N/A
3	600066	Zhengzhou Yutong Bus	10.24	0.42	6.6	14x	3.60	N/A
4	600690	Qingdao Haier	6.93	0.86	13.3	15x	1.69	N/A
5	600887	Inner Mongolia Yili Industrial	6.21	1.38	17.4	25x	2.27	N/A
6	600519	Kweichow Moutai	5.78	2.46	44.6	17x	1.64	N/A
7	600660	FuYao Glass	5.11	0.46	4.4	12x	5.52	13.18%
8	601888	China International Travel Service	4.65	0.45	9.3	37x	0.67	N/A
9	600584	Jiangsu Changjiang Electronics Tech.	4.32	0.13	3.1	84x	0.05	N/A
10	600276	Jiangsu Hengrui Medicine	4.04	0.47	12.6	46x	0.19	N/A

Top 10 HKEx Holdings Through Southbound

	Stock Code	Company Name	% of **Issued and/or Tradeable Shares	% of Total Buy & Sell Trade Value	Market Cap (US\$bn)	*PE Ratio	Dividend Yield (%)	H to A Premium / Discount
1	1072	Dongfang Electric Corporation	17.53	0.69	0.7	19x	0.74	-42.77%
2	1108	Luoyang Glass	16.11	0.25	0.2	167x	N/A	-76.16%
3	553	Nanjing Panda Electronics	15.87	0.10	0.3	46x	0.86	-65.25%
4	564	Zhengzhou Coal Mining Machinery	15.67	0.37	0.2	35x	0.86	-60.93%
5	2880	Dalian Port (PDA)	14.20	0.37	0.5	25x	1.36	-59.95%
6	874	Guangzhou Baiyunshan Pharm.	14.14	0.63	0.8	24x	1.24	-33.09%
7	1065	Tianjin Capital Environ. Protection	14.07	0.23	0.3	24x	1.37	-61.51%
8	187	Beijing Jingcheng Machinery Elect.	13.20	0.14	0.1	86x	N/A	-67.45%
9	38	First Tractor	12.59	0.24	0.3	30x	1.02	-67.43%
10	1171	Yanzhou Coal Mining	11.24	1.23	1.6	32x	0.40	-63.37%

**For China Connect Securities, the % represents number of CCASS shareholding under the Shanghai-Hong Kong Stock Connect against the total number of issued and tradeable A shares on SSE (excluding any B shares, H shares and other non-circulating shares). For other shares, the % represents number of CCASS shareholding against the total number of shares listed on the Stock Exchange of Hong Kong ("SEHK").

Source: SSE & HKEx, as of 26 Jun 2015, Trade Value for 15 Jun – 26 Jun. *Historical P/E Ratio

Top 10 SH-HK Stock Connect Holdings by Market Value

Northbound (NB) Top 10 SH-HK Stock Connect Holdings							
	Stock Code	Company Name	Market Value (US\$ m)	% of *Total Market Value	Shareholding Held in NB (mil)	% of **Issued and/or Tradeable Shares	H to A Premium / Discount
1	601318	Ping An Insurance	2,584	9.88	209	3.86	10.27%
2	600519	Kweichow Moutai	2,549	9.75	66	5.78	N/A
3	600036	China Merchants Bank	1,267	4.85	457	2.22	2.21%
4	600887	Inner Mongolia Yili Industrial	1,049	4.01	374	6.21	N/A
5	600009	Shanghai International Airport	1,020	3.90	222	20.30	N/A
6	601006	Daqin Railway	964	3.69	485	3.26	N/A
7	600690	Qingdao Haier	822	3.14	190	6.93	N/A
8	600900	China Yangtze Power	721	2.76	307	3.15	N/A
9	601398	ICBC	703	2.69	886	0.33	6.17%
10	600104	SAIC Motor Corporation	627	2.40	187	1.70	N/A

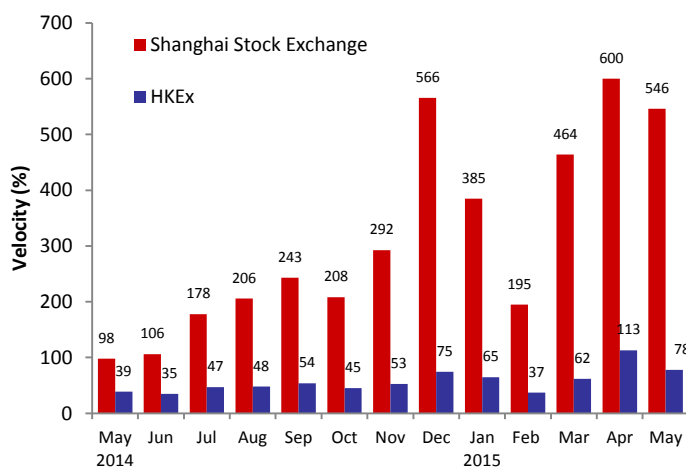
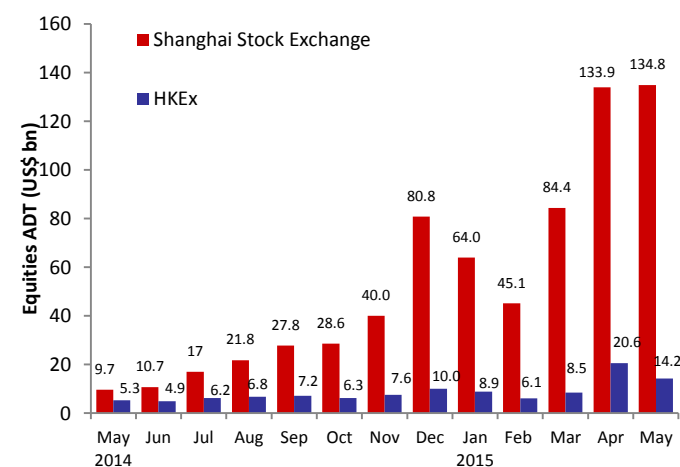
Southbound (SB) Top 10 SH-HK Stock Connect Holdings							
	Stock Code	Company Name	Market Value (US\$ m)	% of *Total Market Value	Shareholding Held in SB (mil)	% of **Issued and/or Tradeable Shares	H to A Premium / Discount
1	388	HKEx	518	3.33	14	1.18	N/A
2	1766	CRRC Corporation	515	3.31	344	7.88	-49.11%
3	700	Tencent Holdings	357	2.29	17	0.18	N/A
4	566	Hanergy Thin Film Power	332	2.14	659	1.58	N/A
5	1816	CGN Power	299	1.92	565	5.07	N/A
6	493	GOME Electrical Appliances	287	1.84	1,228	7.24	N/A
7	656	Fosun International	278	1.78	110	1.42	N/A
8	981	SMIC	275	1.77	2,423	5.95	N/A
9	1060	Alibaba Pictures	269	1.73	662	2.63	N/A
10	3988	Bank of China	262	1.68	403	0.48	-11.05%

Source: SSE & HKEx as of 26 Jun 2015

*Total Market Value is the mark-to-market value (as of 26 Jun 2015) of all Northbound / Southbound holdings under SH-HK Stock Connect Programme

**For China Connect Securities, the % represents number of CCASS shareholding under the Shanghai-Hong Kong Stock Connect against the total number of issued and tradeable A shares on SSE (excluding any B shares, H shares and other non-circulating shares). For other shares, the % represents number of CCASS shareholding against the total number of shares listed on the Stock Exchange of Hong Kong ("SEHK").

Total Market Average Daily Turnover (ADT) & Velocity



Source: WFE & HKEx as of 31 May 2015, ADT and Velocity figures of HKEx include ETF products but excludes warrants

July & August 2015 Trading Calendar

July 2015							August 2015						
Mon	Tue	Wed	Thu	Fri	Sat	Sun	Mon	Tue	Wed	Thu	Fri	Sat	Sun
		★ 1	■ 2	■ 3	4	5						1	2
■ 6	■ 7	■ 8	■ 9	■ 10	11	12	■ 3	■ 4	■ 5	■ 6	■ 7	8	9
■ 13	■ 14	■ 15	■ 16	■ 17	18	19	■ 10	■ 11	■ 12	■ 13	■ 14	15	16
■ 20	■ 21	■ 22	■ 23	■ 24	25	26	■ 17	■ 18	■ 19	■ 20	■ 21	22	23
■ 27	■ 28	■ 29	■ 30	■ 31			■ 24	■ 25	■ 26	■ 27	■ 28	29	30
							■ 31						

★ Hong Kong Public Holiday (Market Close for Northbound & Southbound Trading)
 ■ Two-way (Northbound & Southbound) Trading

Source: SSE click [here](#) (Chinese version only), HKEx click [here](#)

July 2015 Significant Economic News/Data

July 2015			
• 7/7/2015	• HK: Foreign Reserves	• 13/7/2015	• CN: Exports YoY • CN: Imports YoY • CN: Trade Balance
• 9/7/2015	• CN: CPI YoY	• 14/7/2015	• CN: Foreign Direct Investment YoY CNY
• 10/7/2015	• CN: New Yuan Loans CNY • CN: Money Supply M0,M1,M2 YoY • CN: Foreign Reserves	• 15/7/2015	• CN: Retail Sales YTD YoY • CN: Industrial Production YTD YoY • CN: GDP YTD YoY

Note: CN – China, HK – Hong Kong

For More Information on Shanghai – Hong Kong Stock Connect

Visit: www.hkex.com.hk/chinaconnect
 Email: info@hkex.com.hk
 Newsletter: [Previous Issues](#)
 News Release: [8 Apr 2015](#)

Disclaimer

This newsletter is for information only and does not constitute legal or tax advice. Investors should exercise caution when dealing in securities which are eligible for trading under Shanghai-Hong Kong Stock Connect. Hong Kong Exchanges and Clearing Limited and its subsidiaries shall not be liable for any loss or damage incurred or suffered by any person arising from the use of or reliance on this newsletter.

List of China Connect Exchange Participants

ABC Securities Company Limited	First Worldsec Securities Limited	Nanhua Securities (Hong Kong) Company Limited
Astrum Capital Management Limited	Fubon Securities (Hong Kong) Limited	National Resources Securities Limited
Bali Securities Co. Limited	Fulbright Securities Limited	Noble Securities Company Limited
Barclays Capital Asia Limited	GF Securities (Hong Kong) Brokerage Limited	OCBC Wing Hang Shares Brokerage Co. Limited
BNP Paribas Securities (Asia) Limited	Goldman Sachs (Asia) Securities Limited	Optiver Trading Hong Kong Limited
BOCI Securities Limited	Guangdong Securities Limited	Orient Securities (Hong Kong) Limited
BOCOM International Securities Limited	Guodu Securities (Hong Kong) Limited	Phillip Securities (Hong Kong) Limited
Bright Smart Securities International (H.K.) Limited	Guosen Securities (HK) Brokerage Company, Limited	Po Sang Futures Limited
CGB International Securities Limited	Guotai Junan Securities (Hong Kong) Limited	President Securities (Hong Kong) Limited
Celestial Securities Limited	Guoyuan Securities Brokerage (Hong Kong) Limited	Prudential Brokerage Limited
Changjiang Securities Brokerage (HK) Limited	Haitong International Securities Company Limited	Qilu International Securities Limited
Chief Securities Limited	Hang Seng Securities Limited	Quam Securities Company Limited
China Everbright Securities (HK) Limited	Hani Securities (HK) Limited	Realink Financial Trade Limited
China Galaxy International Securities (Hong Kong) Co., Limited	Hong Kong International Securities Limited	Reorient Capital Markets Limited
China International Capital Corporation Hong Kong Securities Limited	HSBC Broking Securities (Hong Kong) Limited	RHB OSK Securities Hong Kong Limited
China Investment Securities International Brokerage Limited	HSBC Securities Brokers (Asia) Limited	SG Securities (HK) Limited
China Merchants Securities (HK) Co., Limited	Huatai Financial Holdings (Hong Kong) Limited	Shacom Securities Limited
China Securities (International) Brokerage Company Limited	I-Access Investors Limited	Shenwan Hongyuan Securities (H.K.) Limited
Chong Hing Securities Limited	ICBC International Securities Limited	Sino Grade Securities Limited
Christfund Securities Limited	Industrial Securities (Hong Kong) Brokerage Limited	SinoPac Securities (Asia) Limited
CIMB Securities Limited	Instinet Pacific Limited	South China Securities Limited
Cinda International Securities Limited	Interactive Brokers Hong Kong Limited	Southwest Securities (HK) Brokerage Limited
CITIC Securities Brokerage (HK) Limited	J.P. Morgan Broking (Hong Kong) Limited	Sun Hung Kai Investment Services Limited
Citigroup Global Markets Asia Limited	Jefferies Hong Kong Limited	Susquehanna Hong Kong Limited
CLSA Limited	JTI Securities Limited	Taifair Securities Limited
CMB International Securities Limited	KGI Securities (Hong Kong) Limited	Taiping Securities (HK) Co Limited
CNI Securities Group Limited	Kim Eng Securities (Hong Kong) Limited	Toyo Securities Asia Limited
Credit Suisse Securities (Hong Kong) Limited	Kingston Securities Limited	Tung Shing Securities (Brokers) Limited
CSC Securities (HK) Limited	Kuentai Securities (Kam Ngan) Company Limited	Tung Tai Securities Company Limited
Daewoo Securities (Hong Kong) Limited	Luk Fook Securities (HK) Limited	UBS Securities Hong Kong Limited
Dah Sing Securities Limited	Macquarie Capital Securities Limited	UOB Kay Hian (Hong Kong) Limited
DBS Vickers (Hong Kong) Limited	Malahon Securities Limited	Upbest Securities Company Limited
Deutsche Securities Asia Limited	Masterlink Securities (Hong Kong) Corporation Limited	Victory Securities Company Limited
East Asia Securities Company Limited	Mega Securities (Hong Kong) Company Limited	Wocom Securities Limited
Emperor Securities Limited	Merrill Lynch Far East Limited	YGD Securities (HK) Limited
Essence International Securities (Hong Kong) Limited	Mirae Asset Wealth Management (HK) Limited	Yuanta Securities (Hong Kong) Company Limited
Ever-Long Securities Company Limited	Morgan Stanley Hong Kong Securities Limited	Yue Xiu Securities Company Limited
First Shanghai Securities Limited	Total: 112 China Connect Exchange Participants (as of 1 June 2015)	

The list has been published: click [here](#)

Appendix - Exchange Participants

List of Trade-through Exchange Participants

Asia-Pac Securities Limited	Hantec Group International Finance Limited	Po Kay Securities & Shares Company Limited
Audrey Chow Securities Limited	Hantec Securities Co. Limited	Prominence Financials Limited
BMI Securities Limited	Head & Shoulders Securities Limited	Reorient Financial Markets Limited
Boom.com Limited	Hing Wai Allied Securities Limited	Sheng Yuan Securities Limited
Brilliant Norton Securities Company Limited	Ho Fung Shares Investment Limited	South Ocean Securities Limited
Business Securities Limited	ISTAR International Securities Co. Limited	SPS Securities Limited
Caitong International Securities Co., Limited	Japan Asia Securities Limited	Stockwell Securities Limited
Capitec Securities Limited	Jimei Securities Limited	Success Securities Limited
China System Securities Limited	JS Cresvale Securities International Limited	Tai Tak Securities (Asia) Limited
China Yinsheng Securities Limited	Jun Yang Securities Company Limited	Taiwan Concord Capital Securities (Hong Kong) Limited
Core Pacific-Yamaichi Securities (H.K.) Limited	Kaiser Securities Limited	Telecom Digital Securities Limited
Delta Asia Securities Limited	KCG Securities Asia Limited	Treasure Securities Limited
Delta Wealth Securities Limited	Ko's Brother Securities Company Limited	Trinity Finance Investment Limited
Formax Securities Limited	Lei Shing Hong Securities Limited	VC Brokerage Limited
FP Sino-Rich Securities & Futures Limited	Lippo Securities Limited	Win Fung Securities Limited
Geminis Securities Limited	M Y Securities Limited	Win Wong Securities Limited
Genting Securities Limited	Marigold International Securities Limited	Wing Fung Securities Limited
GLS Securities Limited	Oriental Patron Securities Limited	Wing Lung Securities Limited
Golden Fountain Securities Limited	Pacific Foundation Securities Limited	Wintech Securities Limited
Grand Investment (Securities) Limited	Partners Capital Securities Limited	Wintone Securities Limited
GT Capital Limited	PC Securities Limited	Wo Fung Securities Company Limited
GuocoCapital Limited	Ping An of China Securities (Hong Kong) Company Limited	Yicko Securities Limited
Halcyon Securities Limited	Total: 67 Trade-through Exchange Participants (as of 22 Jun 2015)	

The list has been published: click [here](#)