

Welcome to the bi-weekly newsletter for the Shanghai-Hong Kong Stock Connect programme. Here you can find regular updates on trading statistics of the programme, trading calendars and economic data calendars.

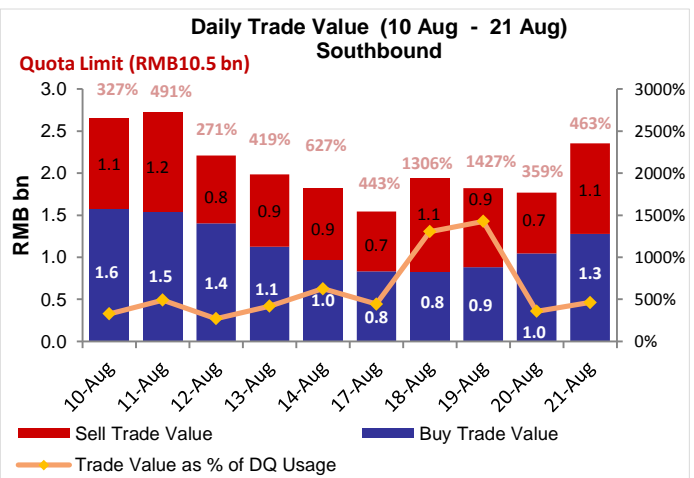
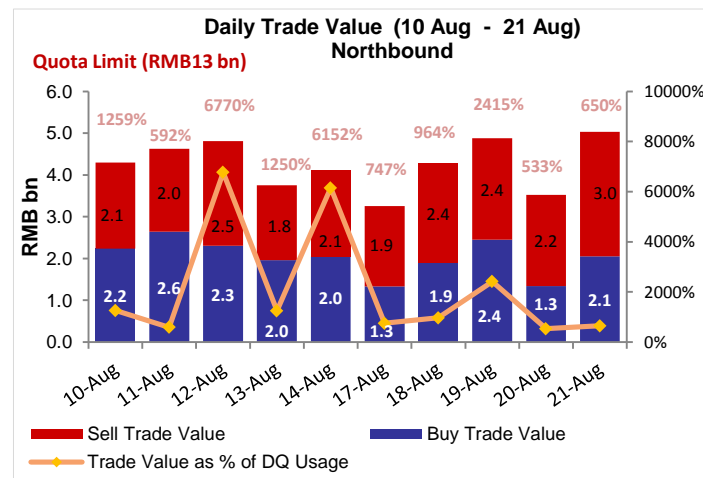
INSIDE THIS ISSUE:

- Market Overview
- Northbound & Southbound Daily Trade Value
- Northbound & Southbound Aggregate Quota Usage
- Northbound Trade Value Breakdown
- Northbound & Southbound Top 10 Stocks by Trade Value
- Top 10 A+H Shares by A+H Market Capitalisation
- Top 10 Holdings by % of Issued Shares
- Top 10 SH-HK Stock Connect Holdings by Market Value
- Total Market Average Daily Turnover & Velocity
- August & September 2015 Trading Calendar
- September 2015 Significant Economic News / Data
- Appendix - List of China Connect / Trade-through Exchange Participants

Market Overview:

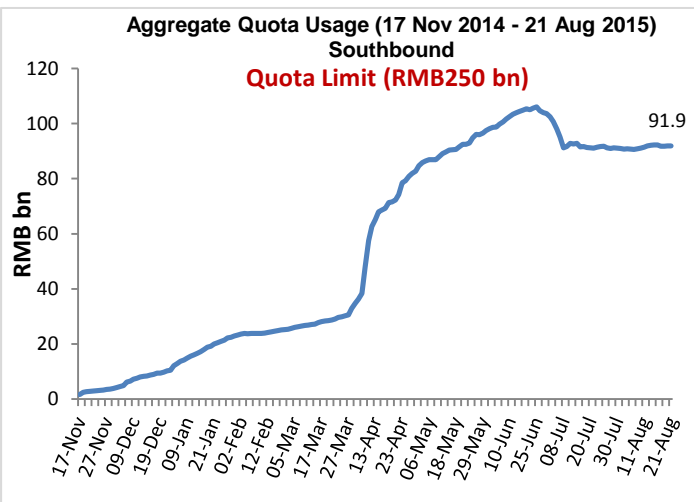
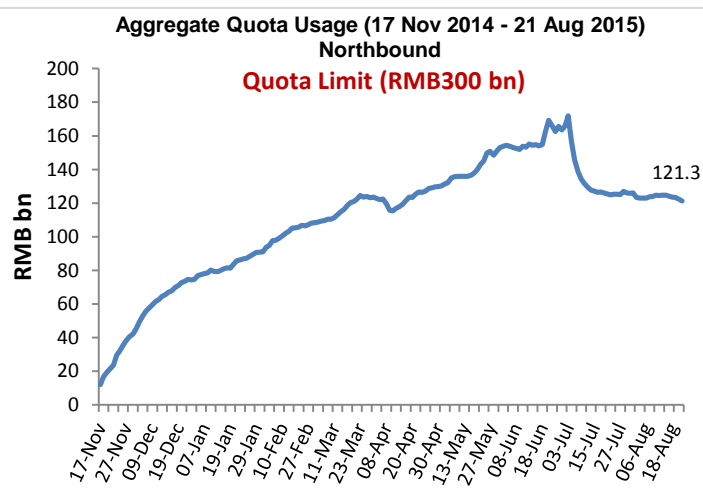
- From 10 Aug to 21 Aug 2015, the Northbound Average Daily Buy and Sell Trade Value was RMB4,255 million while Southbound was HK\$2,535 million
- As of 21 Aug 2015, the Northbound Aggregate Quota Usage was RMB121.3 billion while Southbound was RMB91.9 billion

Northbound & Southbound Daily Trade Value



Source: HKEx, as of 21 Aug 2015

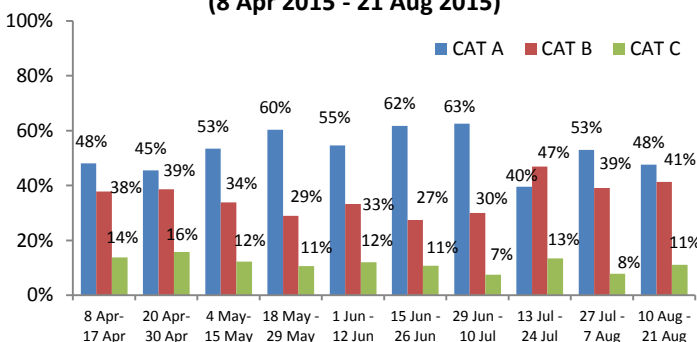
Northbound & Southbound Aggregate Quota Usage



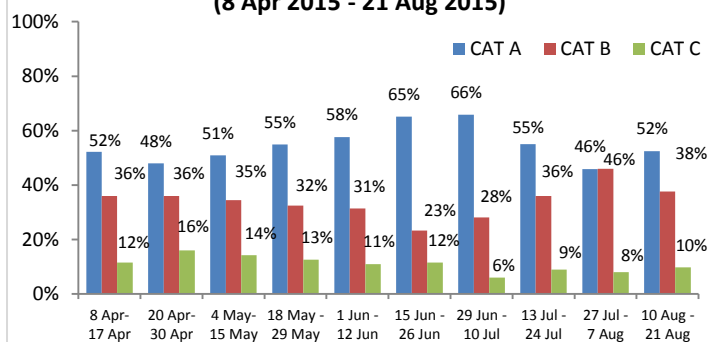
Source: HKEx, as of 21 Aug 2015

Northbound Trade Value Breakdown

Buy Trade Value Breakdown by EPs' Market Share (8 Apr 2015 - 21 Aug 2015)



Sell Trade Value Breakdown by EPs' Market Share (8 Apr 2015 - 21 Aug 2015)



Note: CAT A EPs (Position 1 to 14), CAT B EPs (Position 15 to 65) and CAT C EPs (Position >65). For details, please click [here](#)

Source: HKEx as of 21 Aug 2015, Trade Value for 10 Aug - 21 Aug

Northbound & Southbound Top 10 Stocks by Trade Value

Top 10 A shares by Total Buy & Sell Trade Value in Northbound

Stock Name / Stock Code	Average Trade Size (US\$)	Buy Trade Value (US\$ m)	Sell Trade Value (US\$ m)	Total Trade Value (US\$ m)	% of Total Trade Value	Market Cap (US\$ bn)	*P/E Ratio	Dividend Yield (%)
1. Ping An Insurance (SH. 601318)	8,679	258	202	461	6.92	50	10x	1.28
2. Kweichow Moutai (SH. 600519)	9,832	161	82	242	3.64	37	14x	2.13
3. Inner Mongolia Yili (SH. 600887)	3,709	68	106	174	2.61	16	23x	2.47
4. Shanghai Intl' Airport (SH. 600009)	4,051	62	93	155	2.33	8	23x	1.34
5. China Shipbuilding (SH. 601989)	5,388	54	73	127	1.91	39	137x	0.28
6. Qingdao Haier (SH. 600690)	2,395	41	86	127	1.91	10	12x	2.31
7. SAIC Motor (SH. 600104)	3,521	40	76	116	1.74	29	7x	7.65
8. Anhui Conch Cement (SH. 600585)	5,419	94	16	110	1.65	12	10x	3.46
9. Hundsun Technologies (SH. 600570)	9,554	37	73	109	1.64	6	84x	0.29
10. China Pacific Insurance (SH. 601601)	5,205	69	37	106	1.59	22	16x	2.27

Top 10 HK Stocks by Total Buy & Sell Trade Value in Southbound

Stock Name / Stock Code	Average Trade Size (US\$)	Buy Trade Value (US\$ m)	Sell Trade Value (US\$ m)	Total Trade Value (US\$ m)	% of Total Trade Value	Market Cap (US\$ bn)	*P/E Ratio	Dividend Yield (%)
1. GOME (HK. 493)	8,106	66	46	113	3.45	3	13x	3.12
2. China Huishan Dairy (HK. 6863)	23,417	11	64	75	2.30	5	34x	0.74
3. Haitong Securities (HK. 6837)	9,902	36	38	74	2.27	5	12x	2.55
4. Fosun International (HK. 656)	8,597	45	26	71	2.17	13	10x	1.34
5. CITIC Ltd (HK. 267)	15,947	2	67	69	2.10	52	9x	1.54
6. Shanghai Electric Group (HK. 2727)	6,912	37	31	68	2.07	2	19x	1.56
7. Metallurgical Corp. (HK. 1618)	9,073	48	14	62	1.91	1	11x	2.22
8. Tencent Holdings (HK. 700)	17,145	40	22	62	1.90	160	41x	0.27
9. Digital China (HK. 861)	8,320	28	34	62	1.90	1	11x	47.09
10. Evergrande Real Estate (HK. 3333)	7,411	33	29	62	1.90	9	4x	11.55

Source: SSE & HKEx as of 21 Aug 2015, Trade Value for 10 Aug - 21 Aug. *Historical P/E Ratio

Top 10 A+H Shares by A+H Market Capitalisation

Top 10 A+H Shares by A+H Market Capitalisation

Stock Name (A+H Share)	A + H Market Cap (US\$ bn)	Northbound Trade Value		Southbound Trade Value		A Share Market Cap (US\$ bn)	SSE Market Cap Rank	H to A Premium / Discount
		Buy (US\$ m)	Sell (US\$ m)	Buy (US\$ m)	Sell (US\$ m)			
1. PetroChina	271	6.92	8.18	18.77	11.25	253	1	-45.35%
2. ICBC	247	18.75	32.76	11.58	4.81	192	2	-10.49%
3. China Construction Bank	188	7.11	7.61	4.13	10.13	8	101	-12.91%
4. Bank of China	179	15.79	17.71	13.59	7.46	137	4	-23.13%
5. Agricultural Bank of China	166	11.60	15.14	14.91	12.33	153	3	-18.32%
6. China Life Insurance	101	16.83	20.99	2.20	4.27	77	6	-9.89%
7. China Petroleum & Chemical Crop.	99	9.66	14.55	11.46	9.32	82	5	-20.28%
8. Ping An Insurance	87	258.34	202.25	3.28	12.81	50	8	8.82%
9. Bank of Communications	66	13.10	14.12	7.92	4.04	38	16	-17.03%
10. China Merchants Bank	65	29.03	47.37	5.86	12.77	53	7	-5.11%

Source: SSE & HKEx as of 21 Aug 2015, Trade Value for 10 Aug – 21 Aug

Top 10 Holdings by % of Issued Shares

Top 10 SSE Holdings Through Northbound

	Stock Code	Company Name	% of **Issued and/or Tradeable Shares	% of Total Buy & Sell Trade Value	Market Cap (US\$bn)	*PE Ratio	Dividend Yield (%)	H to A Premium / Discount
1	603288	Foshan Haitian Flavouring and Food	21.15	0.14	12.9	35x	1.55	N/A
2	600009	Shanghai International Airport	15.79	2.33	7.9	23x	1.34	N/A
3	600066	Zhengzhou Yutong Bus	9.81	1.01	6.5	13x	3.53	N/A
4	600660	FuYao Glass Industry Group	5.57	0.36	4.0	11x	5.86	-4.43%
5	600690	Qingdao Haier	5.55	1.91	10.2	12x	2.31	N/A
6	600519	Kweichow Moutai	5.11	3.64	36.6	14x	2.13	N/A
7	600315	Shanghai Jahwa United	4.90	0.66	3.9	26x	1.67	N/A
8	600887	Inner Mongolia Yili Industrial	4.87	2.61	15.5	23x	2.47	N/A
9	600276	Jiangsu Hengrui Medicine	3.73	0.96	13.4	47x	0.18	N/A
10	600584	Jiangsu Changjiang Electronics Tech	3.57	0.27	2.9	81x	0.05	N/A

Top 10 HKEx Holdings Through Southbound

	Stock Code	Company Name	% of **Issued and/or Tradeable Shares	% of Total Buy & Sell Trade Value	Market Cap (US\$bn)	*PE Ratio	Dividend Yield (%)	H to A Premium / Discount
1	564	Zhengzhou Coal Mining Machinery	19.01	0.08	0.1	24x	1.27	-65.32%
2	553	Nanjing Panda Electronics	18.05	0.23	0.2	27x	1.48	-70.59%
3	1072	Dongfang Electric Corporation	17.97	0.29	0.4	12x	1.22	-49.21%
4	874	Guangzhou Baiyunshan Pharm.	15.80	1.13	0.6	17x	1.78	-48.19%
5	2880	Dalian Port (PDA)	15.13	0.67	0.4	18x	1.91	-72.70%
6	1108	Luoyang Glass	14.53	1.88	0.2	139x	N/A	-86.89%
7	187	BJ Jingcheng Machinery Electric	14.14	N/A	0.1	86x	N/A	-66.51%
8	588	Beijing North Star	13.63	0.39	0.2	8x	3.28	-67.25%
9	1171	Yanzhou Coal Mining	11.88	0.86	1.0	21x	0.63	-68.74%
10	107	Sichuan Expressway	11.27	0.27	0.3	7x	3.87	-59.63%

**For China Connect Securities, the % represents number of CCASS shareholding under the Shanghai-Hong Kong Stock Connect against the total number of issued and tradeable A shares on SSE (excluding any B shares, H shares and other non-circulating shares). For other shares, the % represents number of CCASS shareholding against the total number of shares listed on the Stock Exchange of Hong Kong ("SEHK").

Source: SSE & HKEx, as of 21 Aug 2015, Trade Value for 10 Aug – 21 Aug. *Historical P/E Ratio

Top 10 SH-HK Stock Connect Holdings by Market Value

Northbound (NB) Top 10 SH-HK Stock Connect Holdings

	Stock Code	Company Name	Market Value (US\$ m)	% of *Total Market Value	Shareholding Held in NB (mil)	% of **Issued and/or Tradeable Shares	H to A Premium / Discount
1	600519	Kweichow Moutai	1,854	10.92	64	5.11	N/A
2	601318	Ping An Insurance	1,318	7.76	289	2.67	8.82%
3	600887	Inner Mongolia Yili Industrial	736	4.34	293	4.87	N/A
4	600009	Shanghai International Airport	698	4.11	173	15.79	N/A
5	600900	China Yangtze Power	683	4.02	307	3.15	N/A
6	600036	China Merchants Bank	570	3.36	222	1.08	-5.11%
7	600066	Zhengzhou Yutong Bus	546	3.22	187	9.81	N/A
8	601006	Daqin Railway	546	3.21	366	2.46	N/A
9	600690	Qingdao Haier	504	2.97	306	5.55	N/A
10	600276	Jiangsu Hengrui Medicine	492	2.90	73	3.73	N/A

Southbound (SB) Top 10 SH-HK Stock Connect Holdings

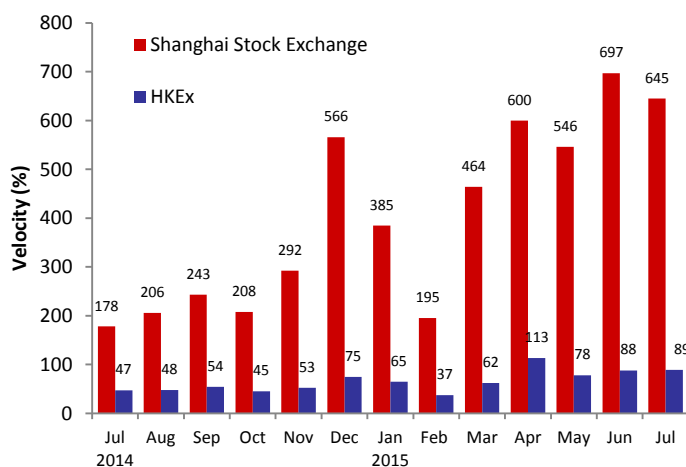
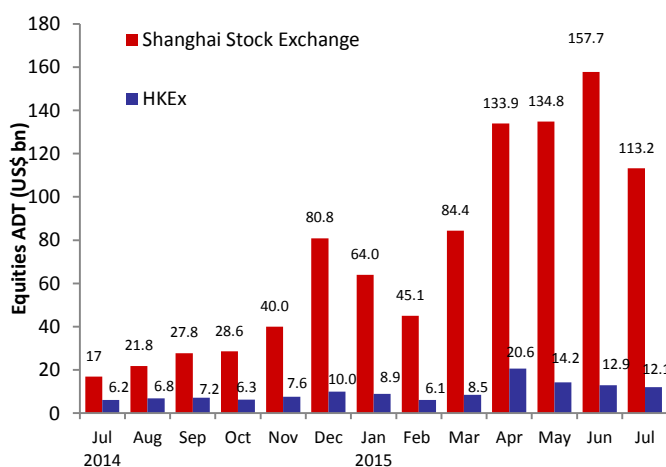
	Stock Code	Company Name	Market Value (US\$ m)	% of *Total Market Value	Shareholding Held in SB (mil)	% of **Issued and/or Tradeable Shares	H to A Premium / Discount
1	566	Hanergy Thin Film Power	332	2.93	659	1.58	N/A
2	1766	CRRC Corporation	291	2.56	250	5.73	-41.28%
3	388	HKEx	268	2.37	11	0.91	N/A
4	1988	China Minsheng Banking	245	2.16	239	3.45	-23.09%
5	700	Tencent Holdings	230	2.03	14	0.14	N/A
6	6837	Haitong Securities	228	2.01	142	4.17	-27.03%
7	493	GOME Electrical Appliances	190	1.68	1,180	6.95	N/A
8	656	Fosun International	189	1.67	116	1.49	N/A
9	3333	Evergrande Real Estate	184	1.63	303	2.09	N/A
10	2899	Zijin Mining	183	1.61	645	11.18	-56.51%

Source: SSE & HKEx as of 21 Aug 2015

*Total Market Value is the mark-to-market value (as of 21 Aug 2015) of all Northbound / Southbound holdings under SH-HK Stock Connect Programme

**For China Connect Securities, the % represents number of CCASS shareholding under the Shanghai-Hong Kong Stock Connect against the total number of issued and tradeable A shares on SSE (excluding any B shares, H shares and other non-circulating shares). For other shares, the % represents number of CCASS shareholding against the total number of shares listed on the Stock Exchange of Hong Kong ("SEHK").

Total Market Average Daily Turnover (ADT) & Velocity



Source: WFE & HKEx as of 31 July 2015, ADT and Velocity figures of HKEx include ETF products but excludes warrants

August & September 2015 Trading Calendar

August 2015							September 2015						
Mon	Tue	Wed	Thu	Fri	Sat	Sun	Mon	Tue	Wed	Thu	Fri	Sat	Sun
					1	2						5	6
3	4	5	6	7	8	9	7	8	9	10	11	12	13
10	11	12	13	14	15	16	14	15	16	17	18	19	20
17	18	19	20	21	22	23	21	22	23	24	25	26	27
24	25	26	27	28	29	30	28	29	30				
31													

■ Two-way (Northbound & Southbound) Trading
■ China / Hong Kong Public Holiday (Market Close for Northbound & Southbound Trading)
■ Northbound Trading Only ■ Southbound Trading Only

Source: SSE click [here](#) (Chinese version only), HKEx click [here](#)

September 2015 Significant Economic News/Data

September 2015			
1/9/2015	CN: Manufacturing PMI	10/9/2015	CN: New Yuan Loans CNY CN: Money Supply M0/M1/M2 YoY
7/9/2015	HK: Foreign Reserves	13/9/2015	CN: Industrial Production YoY CN: Foreign Direct Investment YoY
8/9/2015	CN: Trade Balance CN: Exports YoY CN: Imports YoY	14/9/2015	HK: Industrial Production YoY

Note: CN – China, HK – Hong Kong

For More Information on Shanghai – Hong Kong Stock Connect

Visit: www.hkex.com.hk/chinaconnect
 Email: info@hkex.com.hk
 Newsletter: [Previous Issues](#)
 News Release: [8 Apr 2015](#)

Disclaimer

This newsletter is for information only and does not constitute legal or tax advice. Investors should exercise caution when dealing in securities which are eligible for trading under Shanghai-Hong Kong Stock Connect. Hong Kong Exchanges and Clearing Limited and its subsidiaries shall not be liable for any loss or damage incurred or suffered by any person arising from the use of or reliance on this newsletter.

List of China Connect Exchange Participants

ABCI Securities Company Limited	Finet Securities Limited	Mirae Asset Wealth Management (HK) Limited
Astrum Capital Management Limited	First Shanghai Securities Limited	Morgan Stanley Hong Kong Securities Limited
Bali Securities Co. Limited	First Worldsec Securities Limited	National Resources Securities Limited
Barclays Capital Asia Limited	Founder Securities (Hong Kong) Limited	Noble Securities Company Limited
BNP Paribas Securities (Asia) Limited	Fubon Securities (Hong Kong) Limited	OCBC Wing Hang Shares Brokerage Co. Limited
BOCI Securities Limited	Fulbright Securities Limited	Optiver Trading Hong Kong Limited
BOCOM International Securities Limited	GF Securities (Hong Kong) Brokerage Limited	Orient Securities (Hong Kong) Limited
Bright Smart Securities International (H.K.) Limited	Goldman Sachs (Asia) Securities Limited	Phillip Securities (Hong Kong) Limited
Caitong International Securities Co., Limited	Grand Cartel Securities Company Limited	Po Sang Futures Limited
CGB International Securities Limited	Guangdong Securities Limited	President Securities (Hong Kong) Limited
Celestial Securities Limited	Guodu Securities (Hong Kong) Limited	Prudential Brokerage Limited
Changjiang Securities Brokerage (HK) Limited	Guosen Securities (HK) Brokerage Company, Limited	Quam Securities Company Limited
Chief Securities Limited	Guotai Junan Securities (Hong Kong) Limited	Realink Financial Trade Limited
China Everbright Securities (HK) Limited	Guoyuan Securities Brokerage (Hong Kong) Limited	Reorient Capital Markets Limited
China Galaxy International Securities (Hong Kong) Co., Limited	Haitong International Securities Company Limited	RHB OSK Securities Hong Kong Limited
China Industrial Securities International Brokerage Limited	Hang Seng Securities Limited	SG Securities (HK) Limited
China International Capital Corporation Hong Kong Securities Limited	Hani Securities (H.K.) Limited	Shacom Securities Limited
China Investment Securities International Brokerage Limited	HGNH International Securities Co., Limited	Shenwan Hongyuan Securities (H.K.) Limited
China Merchants Securities (HK) Co., Limited	Hong Kong International Securities Limited	Sino Grade Securities Limited
China Securities (International) Brokerage Company Limited	HSBC Broking Securities (Hong Kong) Limited	SinoPac Securities (Asia) Limited
Chong Hing Securities Limited	HSBC Securities Brokers (Asia) Limited	South China Securities Limited
Christfund Securities Limited	Huatai Financial Holdings (Hong Kong) Limited	Southwest Securities (HK) Brokerage Limited
CIMB Securities Limited	Hui's Brothers Financial Group Limited	Sun Hung Kai Investment Services Limited
Cinda International Securities Limited	I-Access Investors Limited	Susquehanna Hong Kong Limited
CITIC Securities Brokerage (HK) Limited	ICBC International Securities Limited	Taifair Securities Limited
Citigroup Global Markets Asia Limited	Instinet Pacific Limited	Taiping Securities (HK) Co Limited
CLSA Limited	Interactive Brokers Hong Kong Limited	Toyo Securities Asia Limited
CMB International Securities Limited	J.P. Morgan Broking (Hong Kong) Limited	Tung Shing Securities (Brokers) Limited
CNI Securities Group Limited	Jefferies Hong Kong Limited	Tung Tai Securities Company Limited
Core Pacific-Yamaichi Securities (H.K.) Limited	JTI Securities Limited	UBS Securities Hong Kong Limited
Credit Suisse Securities (Hong Kong) Limited	KGI Securities (Hong Kong) Limited	UOB Kay Hian (Hong Kong) Limited
CSC Securities (HK) Limited	Kim Eng Securities (Hong Kong) Limited	Upbest Securities Company Limited
Daewoo Securities (Hong Kong) Limited	Kingston Securities Limited	Victory Securities Company Limited
Dah Sing Securities Limited	Kuentai Securities (Kam Ngan) Company Limited	Win Wind Securities Limited
DBS Vickers (Hong Kong) Limited	Luk Fook Securities (HK) Limited	Wocom Securities Limited
Deutsche Securities Asia Limited	Macquarie Capital Securities Limited	YGD Securities (HK) Limited
East Asia Securities Company Limited	Malahon Securities Limited	Yuanta Securities (Hong Kong) Company Limited
Emperor Securities Limited	Masterlink Securities (Hong Kong) Corporation Limited	Yue Xiu Securities Company Limited
Essence International Securities (Hong Kong) Limited	Mega Securities (Hong Kong) Company Limited	Zhongtai International Securities Limited
Ever-Long Securities Company Limited	Merrill Lynch Far East Limited	Total: 119 China Connect Exchange Participants (as of 25 Aug 2015)

Appendix - Exchange Participants

List of Trade-through Exchange Participants

Asia-Pac Securities Limited	Hantec Group International Finance Limited	Prominence Financials Limited
Audrey Chow Securities Limited	Hantec Securities Co. Limited	Reorient Financial Markets Limited
BMI Securities Limited	Head & Shoulders Securities Limited	Riche Bright Securities Limited
Boom.com Limited	Hing Wai Allied Securities Limited	Sheng Yuan Securities Limited
Brilliant Norton Securities Company Limited	Ho Fung Shares Investment Limited	South Ocean Securities Limited
Business Securities Limited	iSTAR International Securities Co. Limited	SPS Securities Limited
Capitec Securities Limited	Japan Asia Securities Limited	Stockwell Securities Limited
CES Capital International (Hong Kong) Co., Limited	Jimei Securities Limited	Success Securities Limited
China System Securities Limited	JS Cresvale Securities International Limited	Tai Tak Securities (Asia) Limited
China Yinsheng Securities Limited	Jun Yang Securities Company Limited	Taiwan Concord Capital Securities (Hong Kong) Limited
Delta Asia Securities Limited	Kaiser Securities Limited	Telecom Digital Securities Limited
Delta Wealth Securities Limited	KCG Securities Asia Limited	Treasure Securities Limited
Formax Securities Limited	Ko's Brother Securities Company Limited	Trinity Finance Investment Limited
FP Sino-Rich Securities & Futures Limited	Lei Shing Hong Securities Limited	VC Brokerage Limited
Geminis Securities Limited	Lippo Securities Limited	Win Fung Securities Limited
Genting Securities Limited	Marigold International Securities Limited	Win Wong Securities Limited
GLS Securities Limited	Oriental Patron Securities Limited	Wing Fung Securities Limited
Golden Fountain Securities Limited	Pacific Foundation Securities Limited	Wing Lung Securities Limited
Grand Investment (Securities) Limited	Partners Capital Securities Limited	Wintech Securities Limited
GT Capital Limited	PC Securities Limited	Wintone Securities Limited
GuocoCapital Limited	Ping An of China Securities (Hong Kong) Company Limited	Wo Fung Securities Company Limited
Halcyon Securities Limited	Po Kay Securities & Shares Company Limited	Yicko Securities Limited
Total: 66 Trade-through Exchange Participants (as of 11 Aug 2015)		

The list has been published: click [here](#)