

**PG Acquisition Confirmation Reply
and Explanatory Notes**

*(For Participant's Completion and Submission
to
Clearing Participant Admin. and Services
Hong Kong Securities Clearing Company Limited
("HKSCC")
30/F, One
Exchange Square
8 Connaught Place, Central Hong Kong)*

*Fax:2590 7000
Email:CDCO_CAS@hkex.com.hk*

Participant Name : _____

PART I GENERAL INFORMATION

Section A Participant Information

- 1) Participant Name: _____
- 2) Participant ID: _____

Section B Contact Information

Contact Point for Hardware Installation :

- 1) Contact Person : _____
- 2) Position : _____ 3) E-mail Address: _____
- 4) Contact Phone: _____ 5) Contact Fax : _____

Contact Point for Network Installation :

- 6) Contact Person : _____
- 7) Position : _____ 8) E-mail Address: _____
- 9) Contact Phone: _____ 10) Contact Fax : _____

Please be reminded that you are required to fill in **A SEPARATE FORM (i.e. PART II) FOR EACH SET OF PG TO BE INSTALLED** in two different locations.

Participant Name : _____

Part II PG Configuration

Section A PG Configuration

1) PG Configuration :

[Note 1] Single PG:

Dual PG:

2) Address for PG installation : _____

By signing this PG Acquisition Confirmation Reply, the undersigned participant commits to pay for the corresponding charges stated on the Reply.

Signed by the Participant:

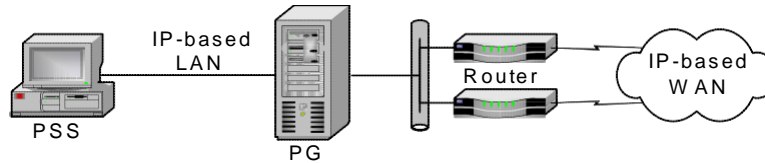
Authorised Signature(s)
(with company chop, ONLY applicable if it forms part of your signing instruction)
Name of Signatory(ies): _____

Date Signed

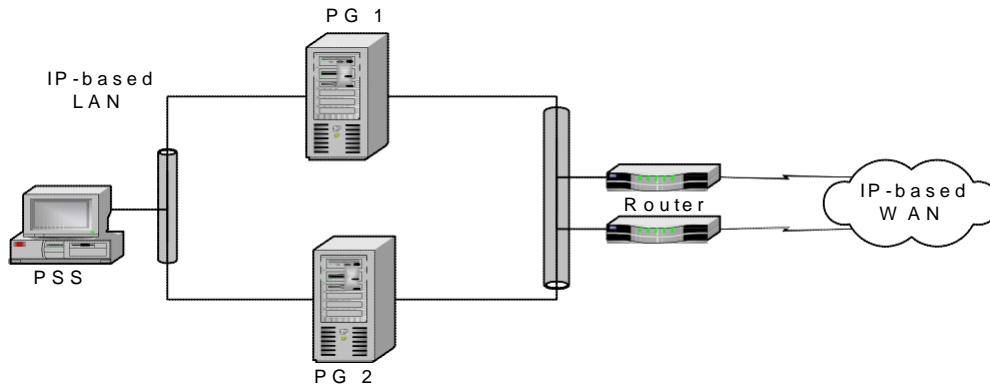
Participant Name : _____

[Note 1] : **PG Configuration** : PG is a machine running with Windows platform. Participant can select to install a single PG or dual PG configuration. Dual PG configuration can be operated in an active-active mode. That is to prevent the single point of failure and increase the overall throughput. Dual PG configuration would be the recommended configuration.

For single PG configuration, it can be as follows:



For dual PG configuration, it can be as follows:



PG Server Ownership / Hardware Maintenance : Participants would possess the hardware and system software ownership of the PG, i.e, Windows Operating System, Symantec Antivirus, while HKEX would possess the PG application software ownership. Any change of PG hardware and software configuration must obtain prior approval from HKEX. In terms of hardware and software maintenance, Participant should procure such service from their vendor of choice. HKEX will be responsible for the maintenance of the PG application only.