

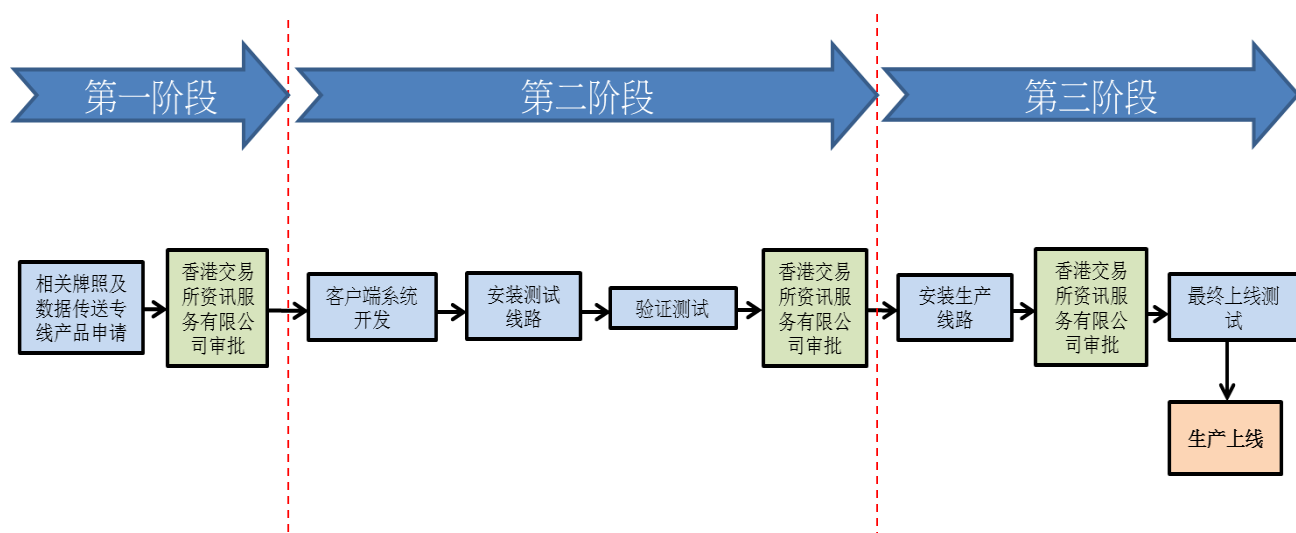
HKEX Information Services Limited

(A wholly-owned member of the Hong Kong Exchanges and Clearing Limited Group)



香港交易所领航星」市场数据平台 - 证券市场 -内地市场数据枢纽(“OMD-C MMDH”)

内地市场数据枢纽数据传送专线工作流程



我们现提供以下清单,客户在准备 OMD-C MMDH 测试的活动时, 可作参考。

第一阶段

| 清单项目 | 时序 | 参考材料 |
|---------------------------------|----|--------------------------------|
| 牌照及数据传送专线产品申请 | | |
| 提交牌照及数据传送专线产品申请表 (A1 - A3) 给交易所 | - | 牌照及数据传送专线产品申请表 |

第二阶段

| 清单项目 | 时序 | 参考材料 |
|--|-----------------------------|---|
| 客户端的系统开发 | | |
| 根据OMD-C MMDH接口规范完成系统开发 | 系统测试辅助工具测试前 | OMD-C MMDH 技术文档 OMD-C MMDH 网页 |
| OMD-C MMDH系统测试辅助工具内部系统测试 | 验证测试开始前 | OMD-C MMDH系统测试辅助工具(个别分发给客户的数码光碟) |
| 提交 OMD-C MMDH 系统测试辅助工具压力测试报告(Workload Report)至 HKEx IV Support | 验证测试开始前至少两个星期 | OMD-C MMDH系统测试辅助工具文档 OMD-C MMDH 网页 |
| 测试线的安装 | | |
| 联系电信公司申请安装测试线 (连接到OMD-C MMDH主要测试服务器) 和安排在交易所主站点的楼内线 | 线路安装前至少八个星期 (即验证测试前至少十个星期)* | OMD-C MMDH在内地技术简报会2013年5月28-30日(更新版) |
| 联系交易所站点运营商 (电讯盈科) 作安装线路前 | 线路安装前至少两个星期 | |

HKEX Information Services Limited

(A wholly-owned member of the Hong Kong Exchanges and Clearing Limited Group)

| 清单项目 | 时序 | 参考材料 |
|--|-----------------|---|
| 的现场检查 | (即验证测试前至少四个星期)* | |
| 交易所提供测试配置表 | 验证测试开始前四个星期 | |
| 在交易所主站点安装测试线和连接楼内线至OMD-C MMDH测试端口 备注:客户应确保所有连接到OMD-C MMDH测试端口所需的网络设备可支持铜导线。 | 验证测试开始前至少两个星期 | 客户配置表样本 OMD-C MMDH 网页 |
| 在交易所站点运营商(电讯盈科)的协助下进行网络调试 | 验证测试开始前两个星期 | |
| 验证测试 | | |
| 向交易所预订验证测试日期 | 验证测试前四个星期 | 测试环境申请表格 OMD-C MMDH 网页 |
| 进行OMD-C MMDH验证测试 | 时间表待定 | OMD-C MMDH验证测试文档 OMD-C MMDH 网页 |
| 提交已填妥之验证测试答题表 | | OMD-C MMDH验证测试文档 OMD-C MMDH 网页 |

第三阶段

| 生产线的安装 | | |
|--|----------------------------------|--|
| 联系电信公司安排在交易所OMD-C MMDH主站点和第二站点安装生产线 1) 主站点 - 把二条测试线重新配置成生产线 2) 第二站点 - 安装生产线(只需1条线的标准配置或需2条线的非标准配置) | 安装线路前至少四个星期* | <ul style="list-style-type: none"> OMD-C MMDH在内地技术简报会2013年5月28-30日(更新版) |
| 联系交易所站点运营商(电讯盈科)作安装线路前的现场检查 | 安装线路前至少两个星期 (即最终上线测试前至少四个星期)* | - |
| 交易所提供生产配置表 | 最终上线测试前四个星期 | - |
| 在交易所主站点和第二站点安装生产线(或重新配置测试线路成生产线路)和连接楼内线至OMD-C MMDH生产端口。 备注:客户应确保所有连接到OMD-C MMDH生产端口所需的网络设备可支持铜导线。 | 最终上线测试前至少两个星期* | 客户配置表样本 OMD-C MMDH 网页 |
| 在交易所站点运营商(电讯盈科)的协助下进行网络调试 | 最终上线测试前一个星期 | |
| 最终上线测试 | | |
| 交易所提供最终上线测试流程 | 最终上线测试前一个星期 | |
| 进行最终上线测试 | 时间表待定 | |

*视乎客户与电信公司和电讯盈科的安排

HKEX Information Services Limited

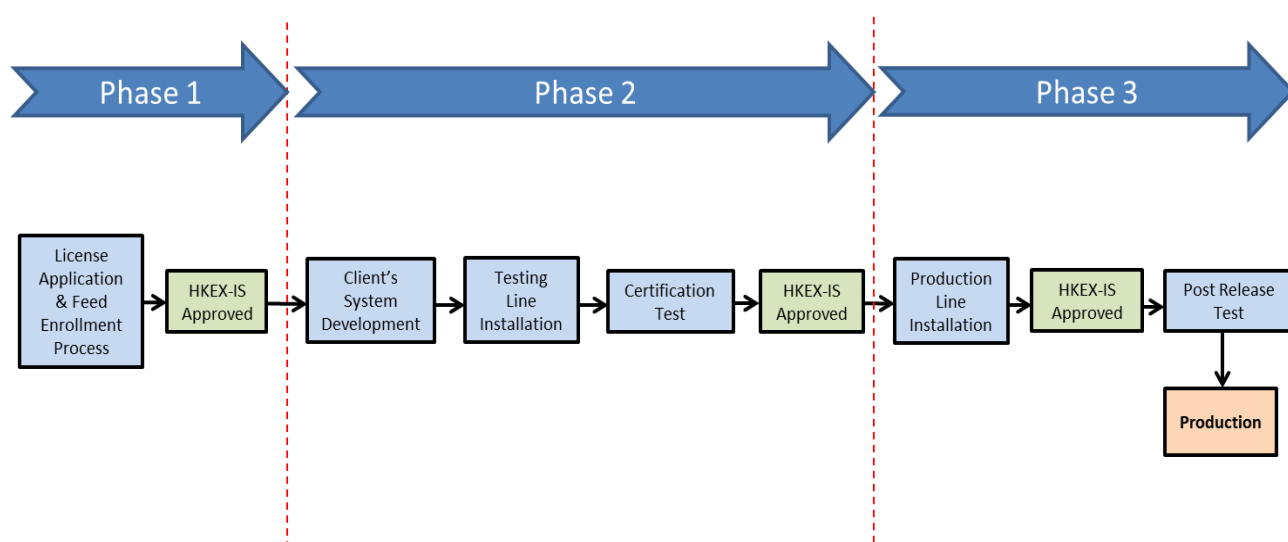
(A wholly-owned member of the Hong Kong Exchanges and Clearing Limited Group)



HKEX Orion Market Data Platform - Securities Market (OMD-C)

- Mainland Market Data Hub (MMDH)

WORKFLOW FOR ACQUIRING DIRECT CONNECTION FOR OMD-C MMDH



The following checklist aiming to facilitate your preparation for the OMD-C MMDH on-boarding activities is for your reference.

Phase 1

| Checklist Items | Recommended Timing | Reference Materials |
|---|--------------------|--|
| License Application & Feed Enrollment | | |
| Submit License and Datafeed Application Forms (A1 – A3) to HKEX | - | License and Datafeed Application Forms |

Phase 2

| Checklist Items | Recommended Timing | Reference Materials |
|---|---|--|
| Client's System Development | | |
| System Development according to OMD-C MMDH Interface Specification | Prior to On-boarding Tool Test | OMD-C MMDH Technical Documents OMD-C MMDH Web Corner |
| Internal System Testing with the OMD-C MMDH On-boarding Tool | Prior to commencement of Certification Test | OMD-C MMDH On-boarding Tool (distributed to clients in DVD individually) |
| Submission of OMD-C MMDH On-boarding Tool Workload Report to HKEX IV Support | At least 2 weeks prior to commencement of Certification Test | OMD-C MMDH On-boarding Tool Documents OMD-C MMDH Web Corner |
| Testing Line Installation | | |
| Contact Telco for ordering of testing line installation (connecting to OMD-C MMDH primary test server) and cross connect arrangement at HKEx primary site | At least 8 weeks prior to line installation (i.e. at least 10 weeks prior to Certification Test)* | Technical Briefing presentation slides |
| Contact HKEX site operator (PCCW) for site inspection prior to line installation | At least 2 weeks prior to line installation (i.e. at | |

HKEX Information Services Limited

(A wholly-owned member of the Hong Kong Exchanges and Clearing Limited Group)

| Checklist Items | Recommended Timing | Reference Materials |
|--|--|--|
| | least 4 weeks prior to Certification Test)* | |
| Receive testing network configuration information from HKEX | 4 weeks prior to Certification Test | - |
| Installation of testing lines & cross connect to OMD-C MMDH testing ports at HKEX primary site. <i>Remarks: Clients should secure all necessary network equipment connecting to OMD-C MMDH testing ports which only support copper lines.</i> | At least 2 weeks prior to commencement of Certification Test | Sample Client Configuration Sheet OMD-C MMDH Web Corner |
| Conduct network commissioning test with the assistance from HKEX site operator (PCCW) | 2 weeks prior to commencement of Certification Test | |
| Certification Test | | |
| Reserve Certification Test environment with HKEX | 4 weeks prior to the Certification Test | Test Service Application Form OMD-C MMDH Web Corner |
| Conduct OMD-C MMDH Certification Test | <i>Subject to Client's testing progress</i> | OMD-C MMDH Certification Test Documents OMD-C MMDH Web Corner |
| Submit Certification Test Answer Sheet | <i>Subject to Client's testing progress</i> | OMD-C MMDH Certification Test Documents OMD-C MMDH Web Corner |

*Subject to the arrangement between clients and Telco/PCCW

Phase 3

| Production Line Installation | | |
|--|---|--|
| Contact Telco for production line preparation at both HKEX OMD-C MMDH primary site and secondary site 1) Primary site – Reconfigure the 2 testing lines into production lines 2) Secondary site – Install production line(s) (1 line for standard configuration and 2 lines for non-standard configuration) | At least 4 weeks prior to line installation* | Technical Briefing presentation slides |
| Contact HKEX site operator (PCCW) for site inspection prior to line installation | At least 2 weeks prior to line installation (i.e. at least 4 weeks prior to Post Release Test)* | - |
| Receive Production Configuration Sheet from HKEX | 4 weeks prior to Post Release Test | - |
| Installation of production lines (or reconfiguration of the testing lines into production lines) & cross connect to OMD-C MMDH production ports at HKEX primary and secondary sites. <i>Remarks: Clients should secure all necessary network equipment connecting to OMD-C MMDH production ports which only support copper lines.</i> | At least 2 weeks prior to Post Release Test* | Sample Client Configuration Sheet OMD-C MMDH Web Corner |
| Conduct network commissioning test with the assistance from HKEX site operator (PCCW) | 1 week prior to Post Release Test | |
| Post-Release Test | | |
| Receive Post-Release Test rundown from HKEX | 1 week prior to Post-Release Test | - |
| Conduct Post-Release Test | <i>Schedule to be advised</i> | |

*Subject to the arrangement between clients and Telco/PCCW