



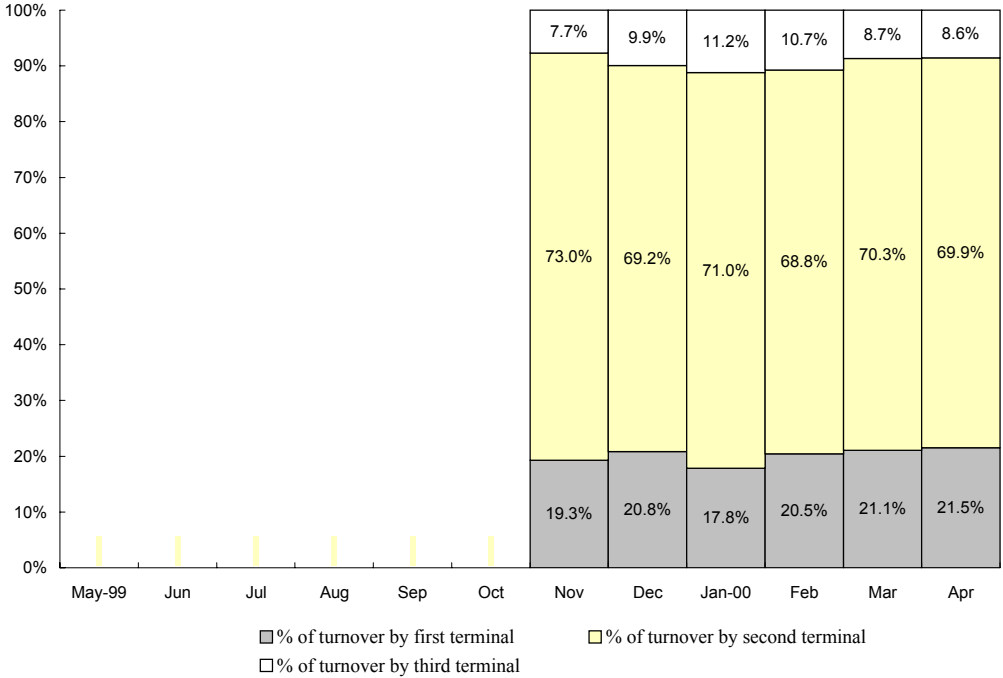
香港聯合交易所

The Stock Exchange of Hong Kong

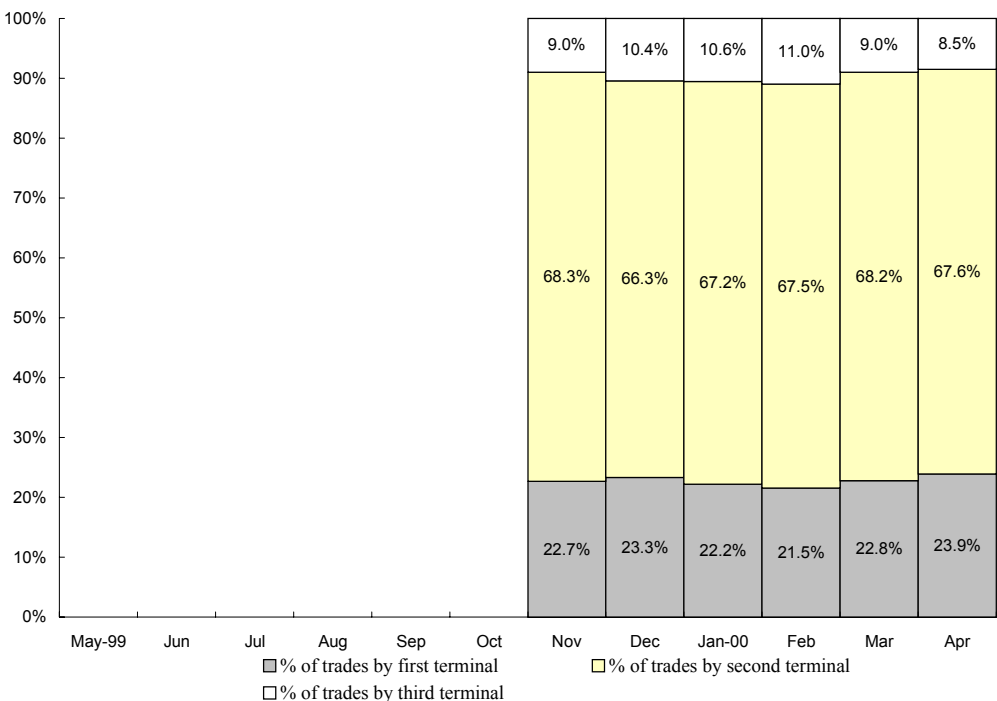
TRADING STATISTICS (GEM)

April 2000 (No. of Trading Days: 17)

Percentage of Turnover (in HK\$) by First, Second and Third Terminals



Percentage of Turnover (in no. of trades) by First, Second and Third Terminals



香港聯合交易所 The Stock Exchange of Hong Kong

(香港交易及結算所有限公司全資附屬公司 A wholly-owned subsidiary of Hong Kong Exchanges and Clearing Limited)

企業傳訊部 Corporate Communications Department

香港中環港景街一號國際金融中心一期11樓 11/F, One International Finance Centre, 1 Harbour View Street, Central, Hong Kong

電話 Telephone: 2522 1122 圖文傳真 Facsimile: 2845 3554