



香港交易所

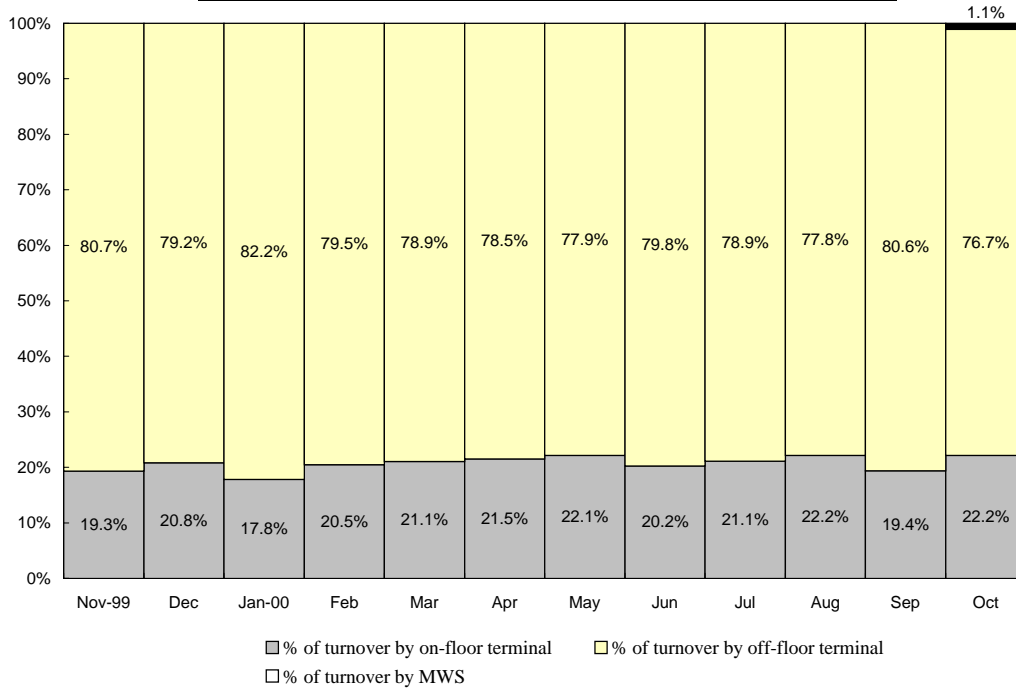
# The Stock Exchange of Hong Kong

(A wholly-owned subsidiary of Hong Kong Exchanges and Clearing Limited)

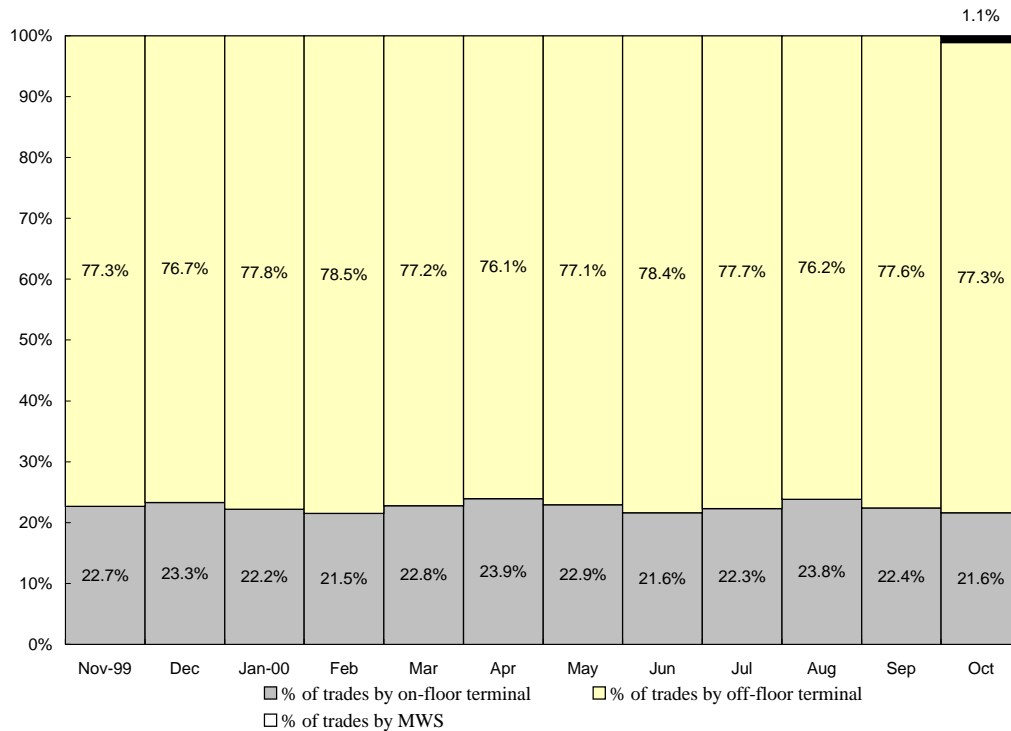
TRADING STATISTICS (GEM)

October 2000 (No. of Trading Days: 20)

Percentage of Turnover (in HK\$) by On-floor, Off-floor Terminals and MWS



Percentage of Turnover (in no. of trades) by On-floor, Off-floor Terminals and MWS



Multi-workstation System (MWS) was put into operation at the date of AMS/3 Launch (23 Oct 2000)

Trading/stat\_e1

香港交易及結算所有限公司

Hong Kong Exchanges and Clearing Limited

香港中環港景街一號國際金融中心一期12樓 12/F, One International Finance Centre, 1 Harbour View Street, Central, Hong Kong  
 電話 Tel: (852) 2522 1122 傳真 Fax: (852) 2295 3106 網址 Website: www.hkex.com.hk 電郵 E-mail: info@hkex.com.hk