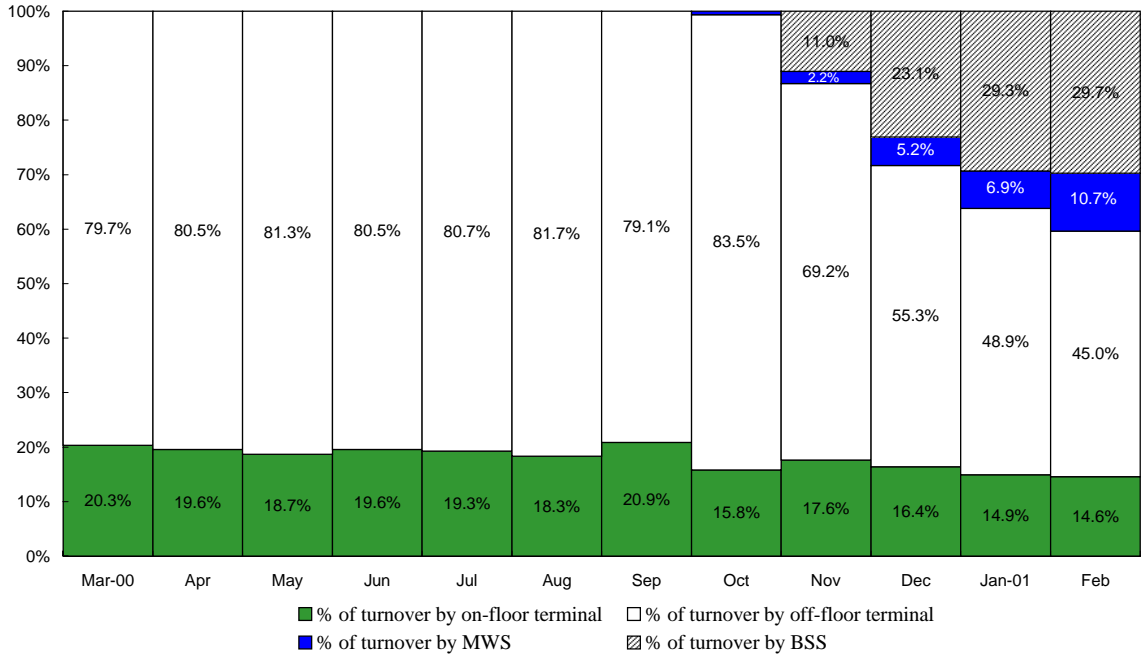




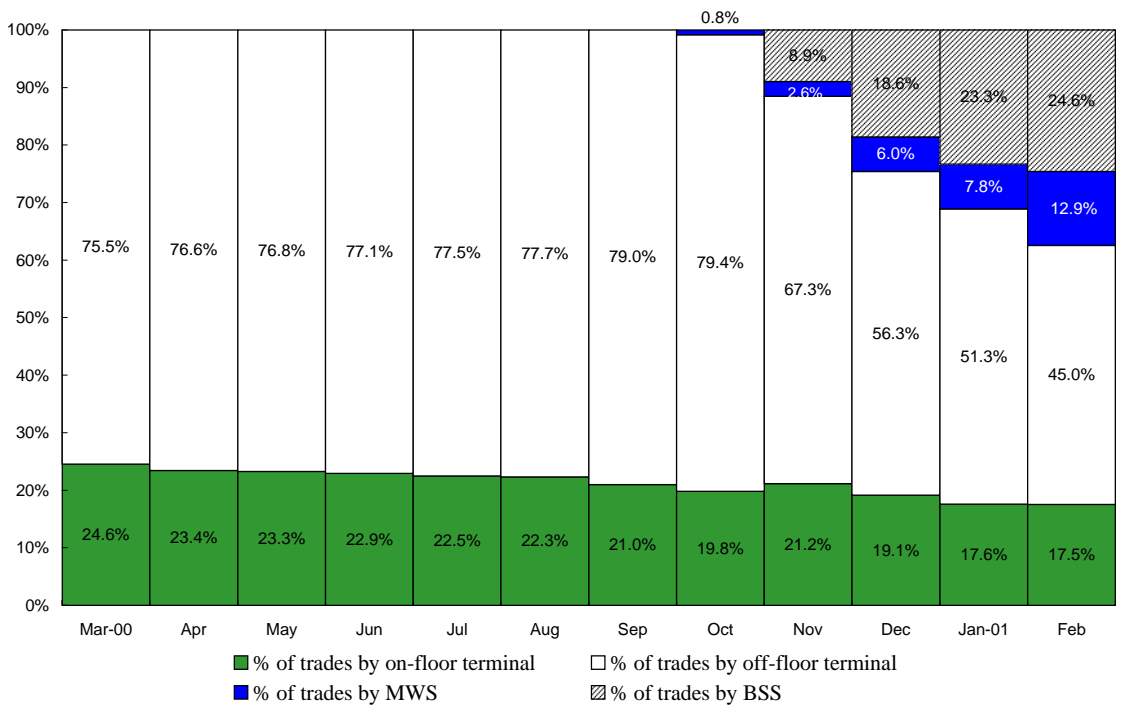
**CASH MARKET
TRADING STATISTICS (Main Board)**

February 2001 (No. of Trading Days: 20)

Percentage of Turnover (in HK\$) by On-floor, Off-floor Terminals, MWS and BSS



Percentage of Turnover (in no. of trades) by On-floor, Off-floor Terminals, MWS and BSS



Multi-workstation System (MWS) was put into operation at the date of AMS/3 Launch (23 Oct 2000)
 Broker Supplied System (BSS) was put into operation on 10 Nov 2000

Trading/stat_e1

香港交易及結算所有限公司

Hong Kong Exchanges and Clearing Limited

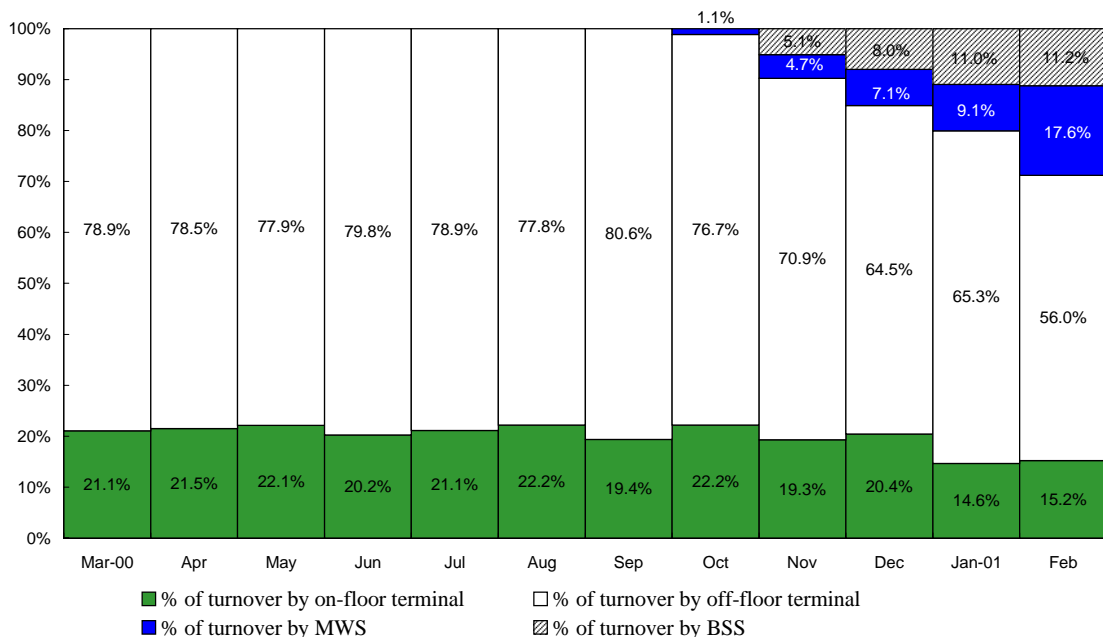
香港中環港景街一號國際金融中心一期12樓 12/F, One International Finance Centre, 1 Harbour View Street, Central, Hong Kong
 電話 Tel: (852) 2522 1122 傳真 Fax: (852) 2295 3106 網址 Website: www.hkex.com.hk 電郵 E-mail: info@hkex.com.hk



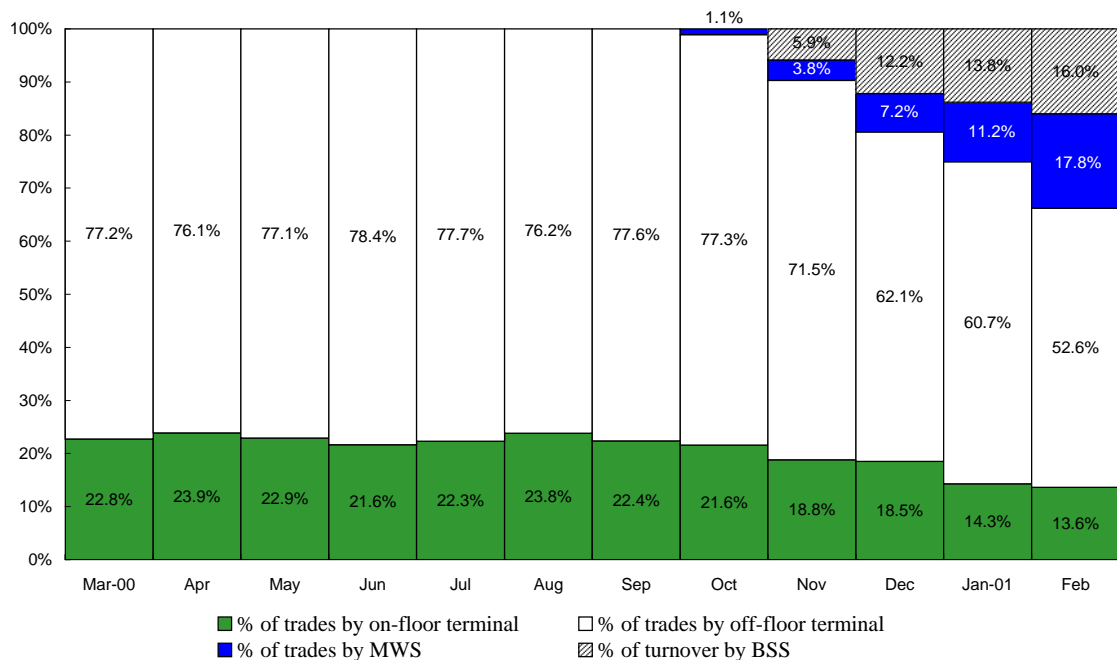
**CASH MARKET
TRADING STATISTICS (GEM)**

February 2001 (No. of Trading Days: 20)

Percentage of Turnover (in HK\$) by On-floor , Off-floor Terminals, MWS and BSS



Percentage of Turnover (in no. of trades) by On-floor, Off-floor Terminals, MWS and BSS



Multi-workstation System (MWS) was put into operation at the date of AMS/3 Launch (23 Oct 2000)
 Broker Supplied System (BSS) was put into operation on 10 Nov 2000

**Transaction in Terms of Turnover and Number of Trades Handled by
On-floor, Off-floor Terminals, MWS and BSS**

Main Board

MM/YY	Turnover (in HK\$ Mil.)					No. of Trades				
	Total	On-floor Terminal	Off-floor Terminal	MWS	BSS	Total	On-floor Terminal	Off-floor Terminal	MWS	BSS
Mar 2000	345,797	70,240	275,557	N/A	N/A	4,260,909	1,046,170	3,214,739	N/A	N/A
Apr 2000	187,948	36,756	151,192	N/A	N/A	2,286,915	535,695	1,751,220	N/A	N/A
May 2000	219,010	40,949	178,061	N/A	N/A	2,521,812	586,345	1,935,467	N/A	N/A
Jun 2000	216,898	42,405	174,493	N/A	N/A	2,467,044	565,943	1,901,101	N/A	N/A
Jul 2000	286,841	55,284	231,557	N/A	N/A	2,904,117	652,296	2,251,821	N/A	N/A
Aug 2000	266,780	48,899	217,881	N/A	N/A	2,757,166	614,695	2,142,471	N/A	N/A
Sep 2000	201,877	42,129	159,748	N/A	N/A	2,001,999	420,473	1,581,526	N/A	N/A
Oct 2000	176,897	27,853	147,857	1,187	N/A	1,903,619	377,507	1,510,525	15,587	N/A
Nov 2000	197,556	34,780	136,596	4,392	21,788	2,434,897	517,005	1,637,210	63,107	217,575
Dec 2000	160,970	26,341	89,047	8,390	37,192	1,858,864	354,529	1,046,305	111,102	346,928
Jan 2001	178,672	26,631	87,332	12,267	52,442	1,847,893	326,064	948,146	143,839	429,844
Feb 2001	181,516	26,482	81,727	19,349	53,958	2,036,023	356,152	916,080	261,796	501,995

GEM

MM/YY	Turnover (in HK\$ Mil.)					No. of Trades				
	Total	On-floor Terminal	Off-floor Terminal	MWS	BSS	Total	On-floor Terminal	Off-floor Terminal	MWS	BSS
Mar 2000	33,678	7,096	26,582	N/A	N/A	338,533	77,045	261,488	N/A	N/A
Apr 2000	6,269	1,348	4,921	N/A	N/A	131,297	31,390	99,907	N/A	N/A
May 2000	3,249	719	2,530	N/A	N/A	70,477	16,165	54,312	N/A	N/A
Jun 2000	3,328	673	2,655	N/A	N/A	64,352	13,916	50,436	N/A	N/A
Jul 2000	7,104	1,501	5,603	N/A	N/A	113,548	25,364	88,184	N/A	N/A
Aug 2000	11,624	2,577	9,047	N/A	N/A	178,773	42,479	136,294	N/A	N/A
Sep 2000	5,531	1,071	4,460	N/A	N/A	88,524	19,830	68,694	N/A	N/A
Oct 2000	3,072	681	2,357	34	N/A	56,328	12,198	43,540	590	N/A
Nov 2000	3,703	715	2,627	172	189	72,590	13,664	51,882	2,790	4,254
Dec 2000	2,174	444	1,402	155	173	48,078	8,892	29,858	3,473	5,855
Jan 2001	2,232	327	1,457	203	245	48,599	6,930	29,494	5,466	6,709
Feb 2001	2,569	390	1,439	452	288	56,262	7,672	29,585	10,026	8,979

Multi-workstation System (MWS) was put into operation at the date of AMS/3 Launch (23 Oct 2000).
Broker Supplied System (BSS) was put into operation on 10 Nov 2000.

Usage of On-floor/Off-floor/Market Making Terminals, MWS and BSS for Trading at Month End

	On-floor Terminal	Off-floor Terminal	Market Making Terminal	MWS Device	BSS Device
No. of Terminal / MWS / BSS Devices for Trading	492	809	2	113	95
No. of Terminal / MWS / BSS Devices for Backup use	372	70	-	-	-
Total no. of Terminal / MWS / BSS Devices	864	879	2	113	95

Traders in Trading Hall

Date	Total
7/2/2001	586
14/2/2001	596
21/2/2001	589
28/2/2001	596

This report will be published at the beginning of every month.