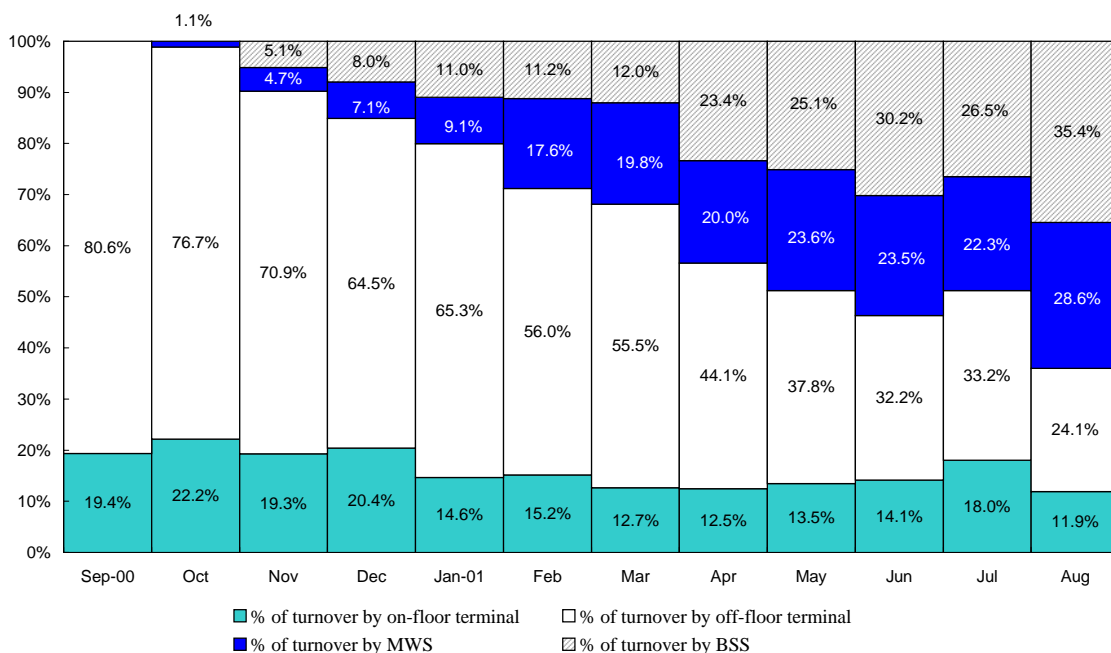




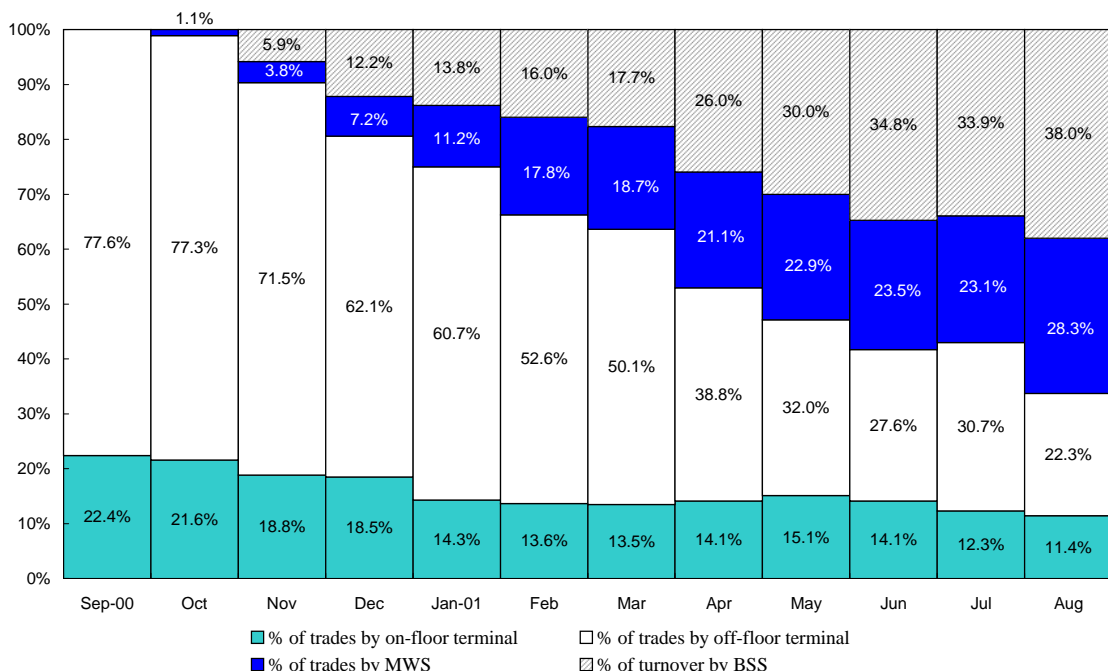
**CASH MARKET  
TRADING STATISTICS (GEM)**

**August 2001 (No. of Trading Days: 23)**

**Percentage of Turnover (in HK\$) by On-floor , Off-floor Terminals, MWS and BSS**



**Percentage of Turnover (in no. of trades) by On-floor, Off-floor Terminals, MWS and BSS**



Multi-workstation System (MWS) was put into operation at the date of AMS/3 Launch (23 Oct 2000)  
 Broker Supplied System (BSS) was put into operation on 10 Nov 2000

Trading/stat\_e1

香港交易及結算所有限公司

Hong Kong Exchanges and Clearing Limited

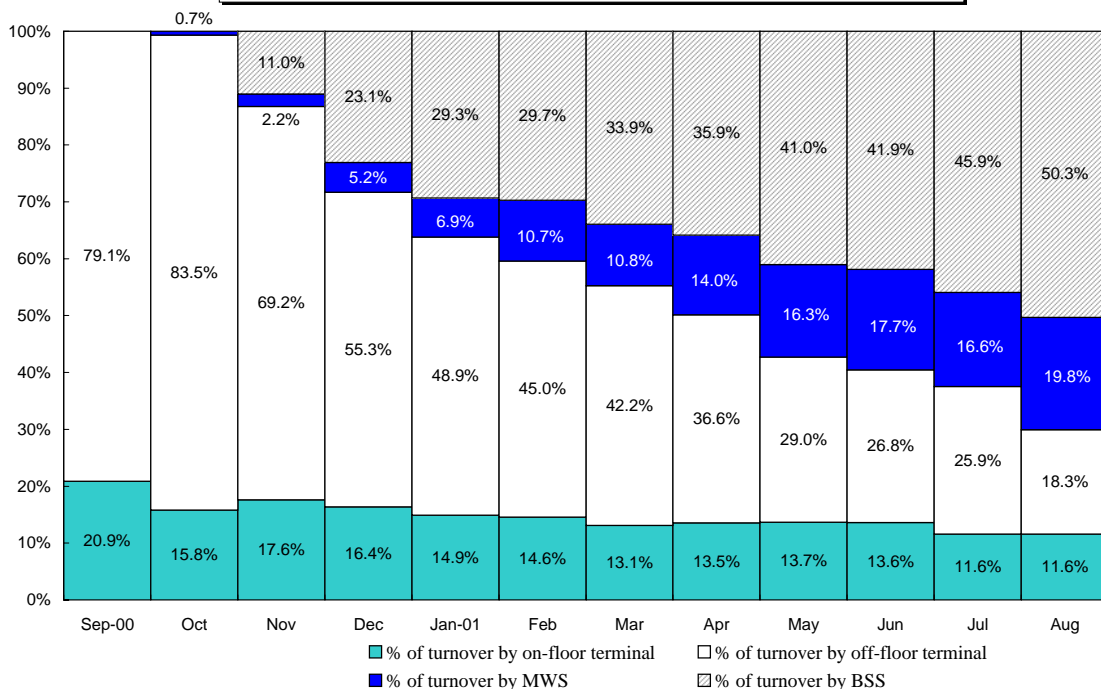
香港中環港景街一號國際金融中心一期12樓 12/F, One International Finance Centre, 1 Harbour View Street, Central, Hong Kong  
 電話 Tel: (852) 2522 1122 傳真 Fax: (852) 2295 3106 網址 Website: www.hkex.com.hk 電郵 E-mail: info@hkex.com.hk



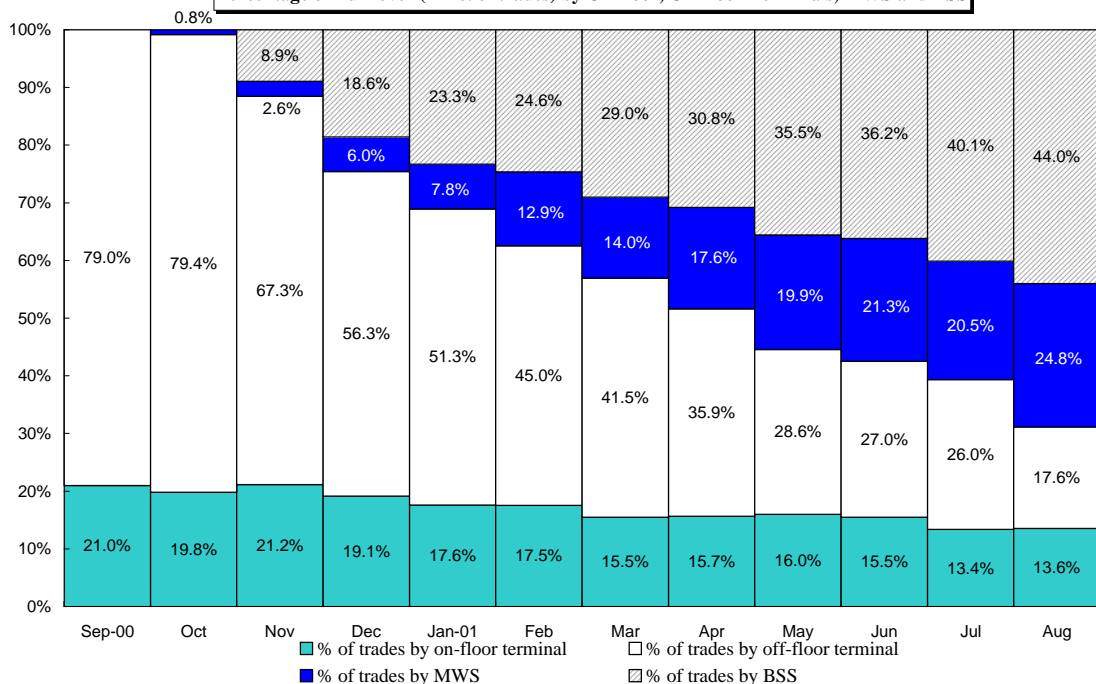
**CASH MARKET  
TRADING STATISTICS (Main Board)**

**August 2001 (No. of Trading Days: 23)**

**Percentage of Turnover (in HK\$) by On-floor, Off-floor Terminals, MWS and BSS**



**Percentage of Turnover (in no. of trades) by On-floor, Off-floor Terminals, MWS and BSS**



Multi-workstation System (MWS) was put into operation at the date of AMS/3 Launch (23 Oct 2000)

Broker Supplied System (BSS) was put into operation on 10 Nov 2000

Turnover of Trading Only Stocks and foreign currency transactions are included

Trading/stat\_e1

香港交易及結算所有限公司

Hong Kong Exchanges and Clearing Limited

香港中環港景街一號國際金融中心一期12樓 12/F, One International Finance Centre, 1 Harbour View Street, Central, Hong Kong  
電話 Tel: (852) 2522 1122 傳真 Fax: (852) 2295 3106 網址 Website: www.hkex.com.hk 電郵 E-mail: info@hkex.com.hk

**Transaction in Terms of Turnover and Number of Trades Handled by  
On-floor, Off-floor Terminals, MWS and BSS**

**Main Board + Trading Only Stocks**

MM/YY	Turnover (in HK\$ Mil.)					No. of Trades				
	Total	On-floor Terminal	Off-floor Terminal	MWS	BSS	Total	On-floor Terminal	Off-floor Terminal	MWS	BSS
Sep 2000	201,877	42,129	159,748	N/A	N/A	2,001,999	420,473	1,581,526	N/A	N/A
Oct 2000	176,897	27,853	147,857	1,187	N/A	1,903,619	377,507	1,510,525	15,587	N/A
Nov 2000	197,556	34,780	136,596	4,392	21,788	2,434,897	517,005	1,637,210	63,107	217,575
Dec 2000	160,970	26,341	89,047	8,390	37,192	1,858,864	354,529	1,046,305	111,102	346,928
Jan 2001	178,672	26,631	87,332	12,267	52,442	1,847,893	326,064	948,146	143,839	429,844
Feb 2001	181,516	26,482	81,727	19,349	53,958	2,036,023	356,152	916,080	261,796	501,995
Mar 2001	184,205	24,192	77,634	19,841	62,538	2,084,009	322,993	864,155	291,709	605,152
Apr 2001	146,895	19,887	53,792	20,565	52,651	1,819,848	285,070	653,879	320,390	560,509
May 2001	212,036	28,942	61,574	34,479	87,041	2,660,837	424,803	760,535	529,518	945,981
Jun 2001	213,709	29,137	57,349	37,718	89,505	2,827,717	437,480	764,857	601,625	1,023,755
Jul 2001	130,368	15,133	33,823	21,574	59,838	1,493,456	199,401	387,901	306,897	599,257
Aug 2001	144,231	16,757	26,382	28,513	72,579	1,706,366	231,246	300,273	423,551	721,296

**GEM**

MM/YY	Turnover (in HK\$ Mil.)					No. of Trades				
	Total	On-floor Terminal	Off-floor Terminal	MWS	BSS	Total	On-floor Terminal	Off-floor Terminal	MWS	BSS
Sep 2000	5,531	1,071	4,460	N/A	N/A	88,524	19,830	68,694	N/A	N/A
Oct 2000	3,072	681	2,357	34	N/A	56,328	12,198	43,540	590	N/A
Nov 2000	3,703	715	2,627	172	189	72,590	13,664	51,882	2,790	4,254
Dec 2000	2,174	444	1,402	155	173	48,078	8,892	29,858	3,473	5,855
Jan 2001	2,232	327	1,457	203	245	48,599	6,930	29,494	5,466	6,709
Feb 2001	2,569	390	1,439	452	288	56,262	7,672	29,585	10,026	8,979
Mar 2001	2,616	331	1,452	519	314	60,457	8,141	30,316	11,322	10,678
Apr 2001	2,968	370	1,310	594	694	68,424	9,642	26,574	14,437	17,771
May 2001	7,699	1,036	2,909	1,820	1,934	148,071	22,362	47,367	33,903	44,439
Jun 2001	7,281	1,030	2,345	1,710	2,196	112,454	15,886	31,005	26,468	39,095
Jul 2001	2,575	465	854	574	682	54,178	6,654	16,612	12,504	18,408
Aug 2001	1,327	158	320	379	470	38,364	4,378	8,552	10,859	14,575

Multi-workstation System (MWS) was put into operation at the date of AMS/3 Launch (23 Oct 2000)

Broker Supplied System (BSS) was put into operation on 10 Nov 2000

Transactions concluded in foreign currencies are included

**Usage of On-floor/Off-floor/Market Making Terminals, MWS and BSS for Trading at Month End**

	On-floor Terminal	Off-floor Terminal	Market Making Terminal	MWS Device	BSS Device
No. of Terminal / MWS / BSS Devices for Trading	437	380	2	184	178
No. of Terminal / MWS / BSS Devices for Backup use	440	64	-	-	-
Total no. of Terminal / MWS / BSS Devices	877	444	2	184	178

**Traders in Trading Hall**

Date	Total
1/8/2001	560
8/8/2001	537
15/8/2001	556
22/8/2001	554
29/8/2001	532

*This report will be published at the beginning of every month.*