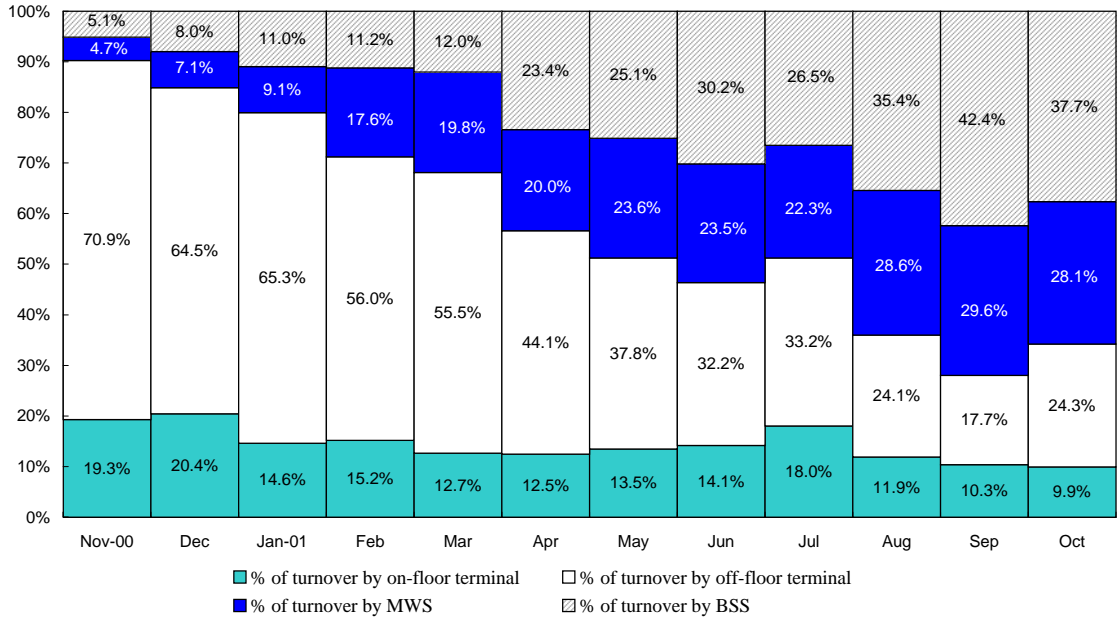




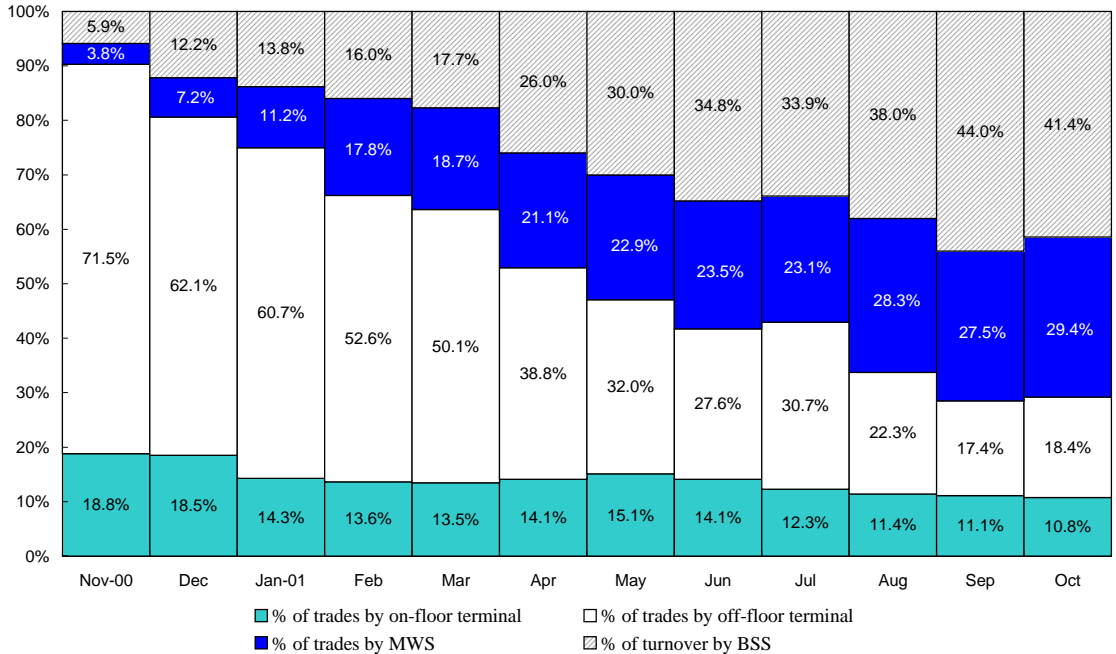
**CASH MARKET
TRADING STATISTICS (GEM)**

October 2001 (No. of Trading Days: 20)

Percentage of Turnover (in HK\$) by On-floor , Off-floor Terminals, MWS and BSS



Percentage of Turnover (in no. of trades) by On-floor, Off-floor Terminals, MWS and BSS



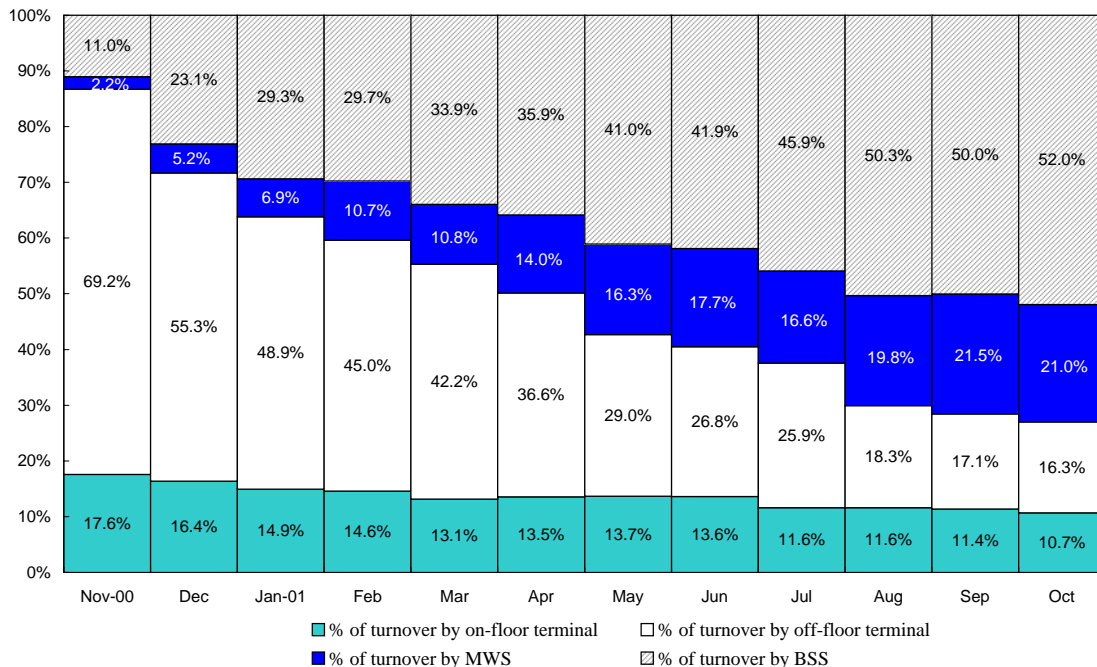
Multi-workstation System (MWS) was put into operation at the date of AMS/3 launch (23 Oct 2000)
 Broker Supplied System (BSS) was put into operation on 10 Nov 2000



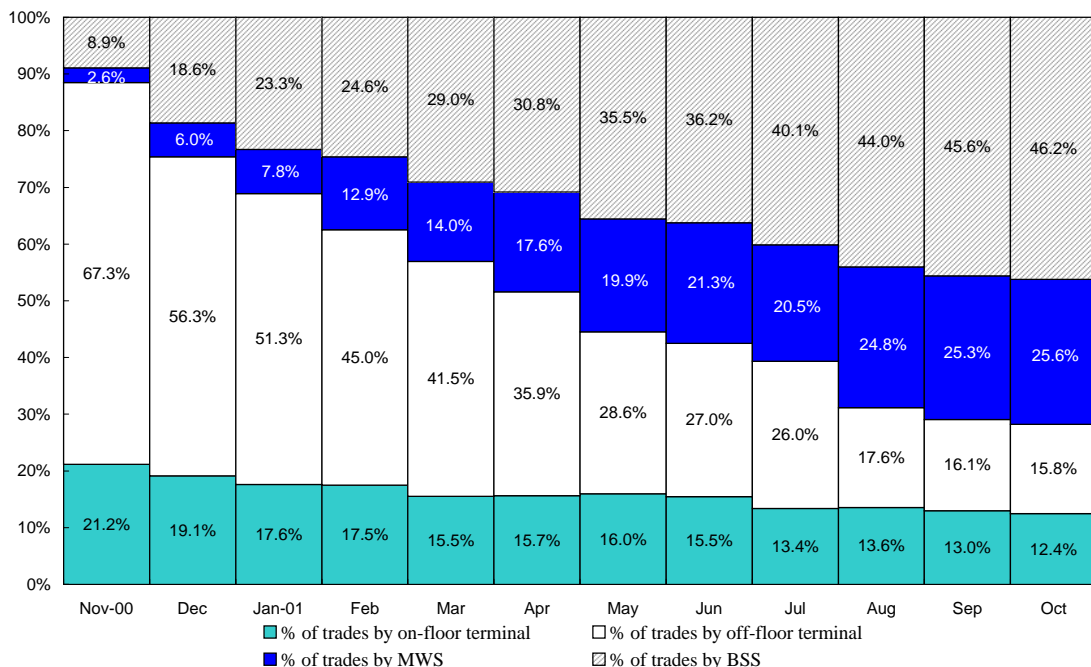
**CASH MARKET
TRADING STATISTICS (Main Board)**

October 2001 (No. of Trading Days: 20)

Percentage of Turnover (in HK\$) by On-floor, Off-floor Terminals, MWS and BSS



Percentage of Turnover (in no. of trades) by On-floor, Off-floor Terminals, MWS and BSS



Multi-workstation System (MWS) was put into operation at the date of AMS/3 launch (23 Oct 2000)
 Broker Supplied System (BSS) was put into operation on 10 Nov 2000
 Turnover of Trading Only Stocks and foreign currency transactions are included

Trading/stat_e1

香港交易及結算有限公司

Hong Kong Exchanges and Clearing Limited

香港中環港景街一號國際金融中心一期12樓 12/F, One International Finance Centre, 1 Harbour View Street, Central, Hong Kong
 電話 Tel: (852) 2522 1122 傳真 Fax: (852) 2295 3106 網址 Website: www.hkex.com.hk 電郵 E-mail: info@hkex.com.hk

**Transaction in Terms of Turnover and Number of Trades Handled by
On-floor, Off-floor Terminals, MWS and BSS**

Main Board + Trading Only Stocks

| MM/YY | Turnover (in HK\$ Mil.) | | | | | No. of Trades | | | | |
|----------|-------------------------|-------------------|--------------------|--------|--------|---------------|-------------------|--------------------|---------|-----------|
| | Total | On-floor Terminal | Off-floor Terminal | MWS | BSS | Total | On-floor Terminal | Off-floor Terminal | MWS | BSS |
| Nov 2000 | 197,556 | 34,780 | 136,596 | 4,392 | 21,788 | 2,434,897 | 517,005 | 1,637,210 | 63,107 | 217,575 |
| Dec 2000 | 160,970 | 26,341 | 89,047 | 8,390 | 37,192 | 1,858,864 | 354,529 | 1,046,305 | 111,102 | 346,928 |
| Jan 2001 | 178,672 | 26,631 | 87,332 | 12,267 | 52,442 | 1,847,893 | 326,064 | 948,146 | 143,839 | 429,844 |
| Feb 2001 | 181,516 | 26,482 | 81,727 | 19,349 | 53,958 | 2,036,023 | 356,152 | 916,080 | 261,796 | 501,995 |
| Mar 2001 | 184,205 | 24,192 | 77,634 | 19,841 | 62,538 | 2,084,009 | 322,993 | 864,155 | 291,709 | 605,152 |
| Apr 2001 | 146,895 | 19,887 | 53,792 | 20,565 | 52,651 | 1,819,848 | 285,070 | 653,879 | 320,390 | 560,509 |
| May 2001 | 212,036 | 28,942 | 61,574 | 34,479 | 87,041 | 2,660,837 | 424,803 | 760,535 | 529,518 | 945,981 |
| Jun 2001 | 213,709 | 29,137 | 57,349 | 37,718 | 89,505 | 2,827,717 | 437,480 | 764,857 | 601,625 | 1,023,755 |
| Jul 2001 | 130,368 | 15,133 | 33,823 | 21,574 | 59,838 | 1,493,456 | 199,401 | 387,901 | 306,897 | 599,257 |
| Aug 2001 | 144,231 | 16,757 | 26,382 | 28,513 | 72,579 | 1,706,366 | 231,246 | 300,273 | 423,551 | 721,296 |
| Sep 2001 | 137,211 | 15,592 | 23,447 | 29,532 | 68,640 | 1,632,819 | 211,652 | 262,993 | 413,398 | 744,776 |
| Oct 2001 | 139,296 | 14,901 | 22,741 | 29,320 | 72,334 | 1,759,498 | 218,971 | 277,182 | 450,059 | 813,286 |

GEM

| MM/YY | Turnover (in HK\$ Mil.) | | | | | No. of Trades | | | | |
|----------|-------------------------|-------------------|--------------------|-------|-------|---------------|-------------------|--------------------|--------|--------|
| | Total | On-floor Terminal | Off-floor Terminal | MWS | BSS | Total | On-floor Terminal | Off-floor Terminal | MWS | BSS |
| Nov 2000 | 3,703 | 715 | 2,627 | 172 | 189 | 72,590 | 13,664 | 51,882 | 2,790 | 4,254 |
| Dec 2000 | 2,174 | 444 | 1,402 | 155 | 173 | 48,078 | 8,892 | 29,858 | 3,473 | 5,855 |
| Jan 2001 | 2,232 | 327 | 1,457 | 203 | 245 | 48,599 | 6,930 | 29,494 | 5,466 | 6,709 |
| Feb 2001 | 2,569 | 390 | 1,439 | 452 | 288 | 56,262 | 7,672 | 29,585 | 10,026 | 8,979 |
| Mar 2001 | 2,616 | 331 | 1,452 | 519 | 314 | 60,457 | 8,141 | 30,316 | 11,322 | 10,678 |
| Apr 2001 | 2,968 | 370 | 1,310 | 594 | 694 | 68,424 | 9,642 | 26,574 | 14,437 | 17,771 |
| May 2001 | 7,699 | 1,036 | 2,909 | 1,820 | 1,934 | 148,071 | 22,362 | 47,367 | 33,903 | 44,439 |
| Jun 2001 | 7,281 | 1,030 | 2,345 | 1,710 | 2,196 | 112,454 | 15,886 | 31,005 | 26,468 | 39,095 |
| Jul 2001 | 2,575 | 465 | 854 | 574 | 682 | 54,178 | 6,654 | 16,612 | 12,504 | 18,408 |
| Aug 2001 | 1,327 | 158 | 320 | 379 | 470 | 38,364 | 4,378 | 8,552 | 10,859 | 14,575 |
| Sep 2001 | 736 | 76 | 130 | 218 | 312 | 23,141 | 2,575 | 4,021 | 6,367 | 10,178 |
| Oct 2001 | 1,382 | 138 | 335 | 389 | 520 | 39,910 | 4,302 | 7,346 | 11,742 | 16,520 |

Multi-workstation System (MWS) was put into operation at the date of AMS/3 launch (23 Oct 2000)

Broker Supplied System (BSS) was put into operation on 10 Nov 2000

Transactions concluded in foreign currencies are included

Trading/stat_p2

Usage of On-floor/Off-floor/Market Making Terminals, MWS and BSS for Trading at Month End

| | On-floor Terminal | Off-floor Terminal | Market Making Terminal | MWS Device | BSS Device |
|--|-------------------|--------------------|------------------------|------------|------------|
| No. of Terminal / MWS / BSS Devices for Trading | 410 | 375 | 2 | 184 | 179 |
| No. of Terminal / MWS / BSS Devices for Backup use | 463 | 62 | - | - | - |
| Total no. of Terminal / MWS / BSS Devices | 873 | 437 | 2 | 184 | 179 |

Traders in Trading Hall

| Date | Total |
|------------|-------|
| 3/10/2001 | 523 |
| 10/10/2001 | 527 |
| 17/10/2001 | 522 |
| 24/10/2001 | 482 |
| 31/10/2001 | 468 |

This report will be published at the beginning of every month.